

Jade B – 1480 SQ. FT.

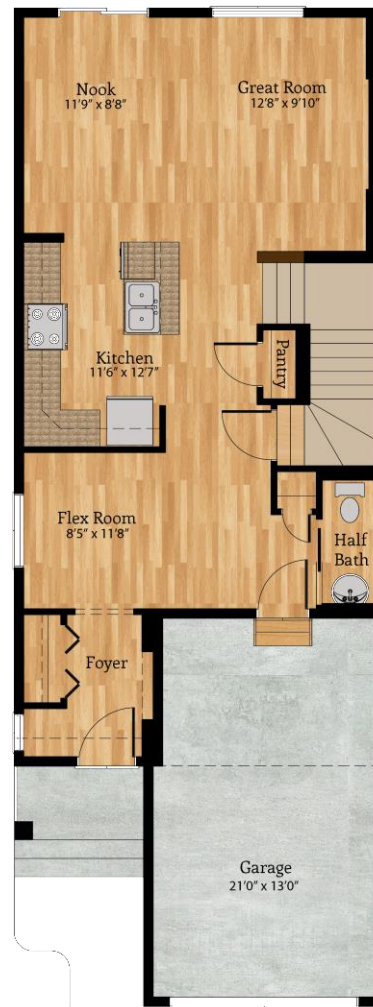
\$376,900

Incl. Home, Lot and GST

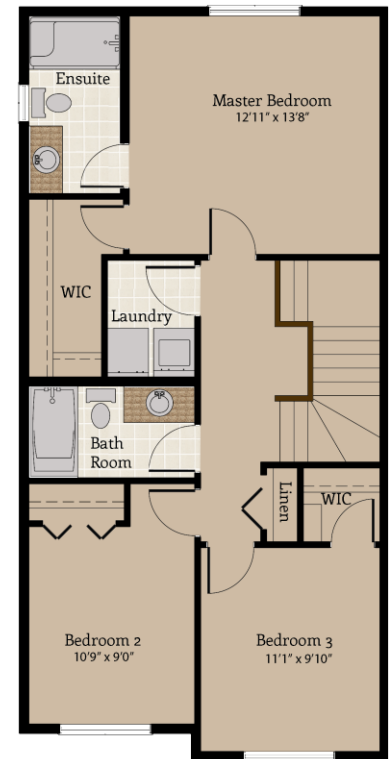


1206 33A Street NW

- 3 bedrooms, 2 1/2 bathrooms
- 10' x 10' rear pressure treated deck
- Master bedroom ensuite and walk in closet
- Upper floor laundry
- Granite Kitchen countertop
- Laminate flooring throughout main floor
- HRV system
- Double car garage
- Electric fireplace
- Flex room



MAIN FLOOR | 724 sq. ft.



UPPER FLOOR | 756 sq. ft.

Artist concept- See working drawings and current specifications. Dimensions shown are approximate and are subject to change without notice.

Stop Waiting. Start Living.

Wouldn't it be nice to move into a community where all the amenities are already built and ready to use? A brand new Recreation Centre with a library branch? A grocery store, drug store, and convenience shopping all down the street? Laurel has excellent access to both Public and Catholic schools from K-12, and will have a new Public K-9 school scheduled to open in 2017, as well as to the nearby Grey Nuns full service hospital. Walking paths in Stage 16 will connect to playgrounds and pond areas that have already been fully landscaped. You can build a home you love in a neighborhood second to none, and skip the growing pains usually associated with a new community.

SHOWHOME INFORMATION

1204 33A Street NW

laurelduplexes@crystalcreekhomes.ca

Monday – Thursday: 3:00 Pm – 8 Pm

Weekends and Holidays: 12:00 Pm – 5:00 Pm

Show Home: 1204 33A Street NW – laurelduplexes@crystalcreekhomes.ca

CRYSTAL CREEK
HOMES

crystalcreekhomes.ca



161204