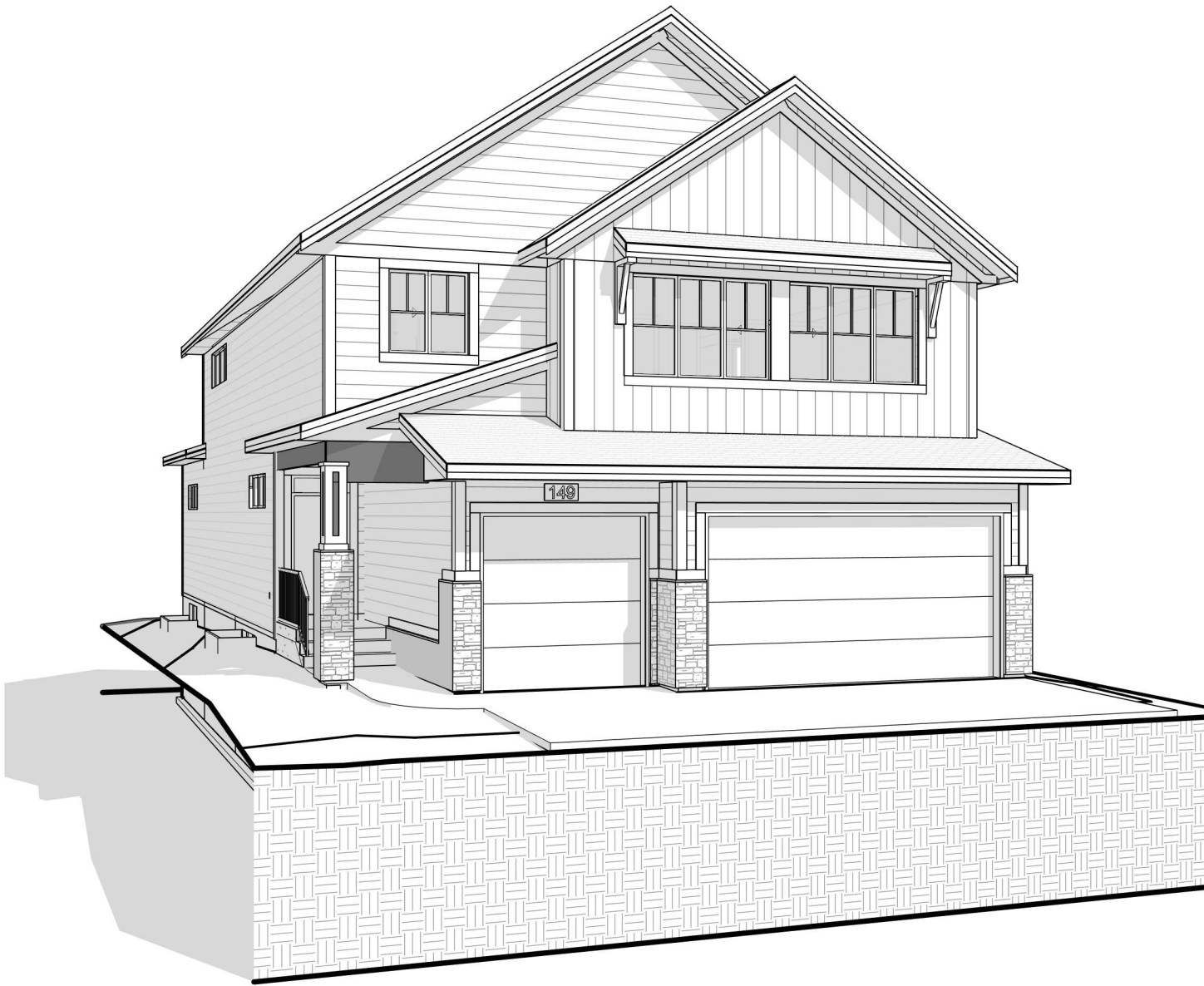
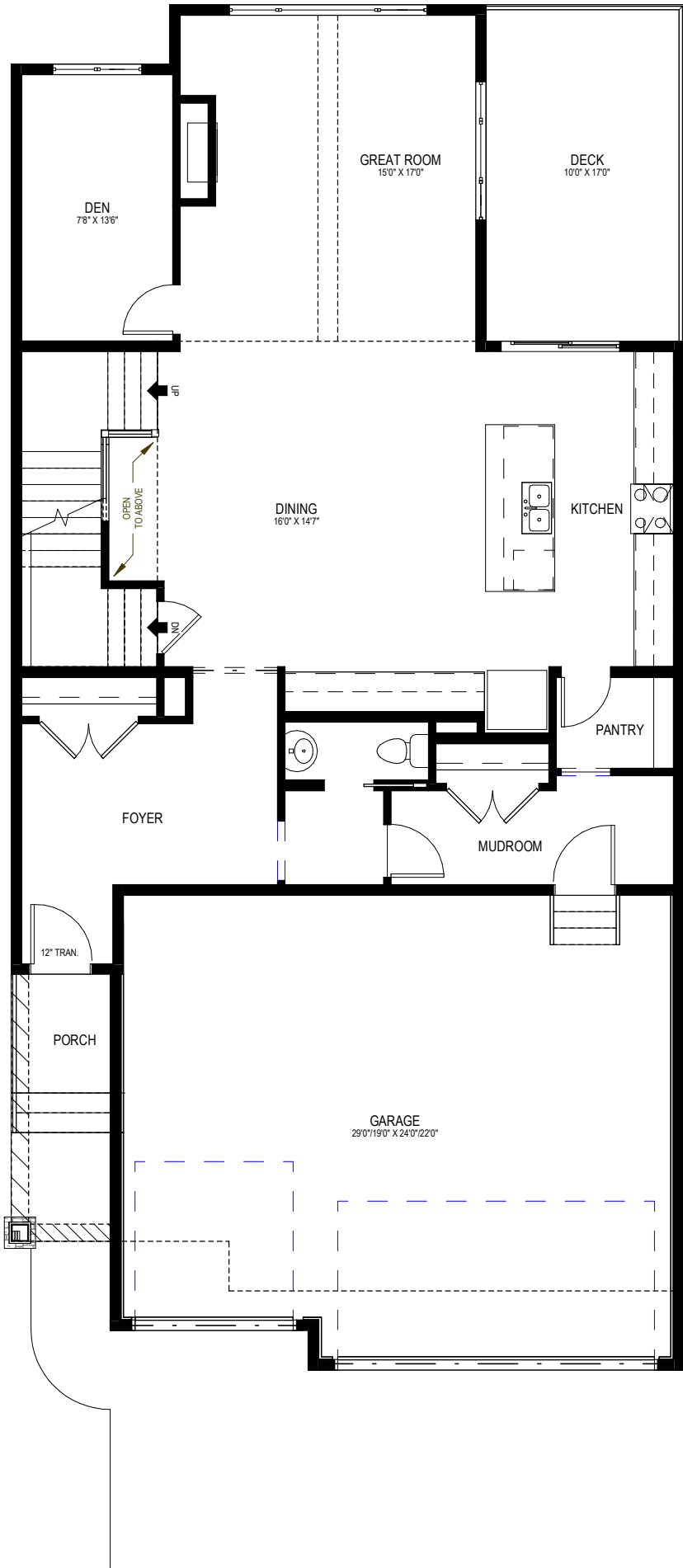


# 149 South Shore View SE

RMS MEASUREMENTS	
MAIN FLOOR	1359 ft²
UPPER FLOOR	1494 ft²
UPPER FLOOR STAIR	88 ft²
HOUSE TOTAL	2941 ft²
BSMNT. DVLP.	0 ft²
BSMNT. STAIR	95 ft²
DECK	170 ft²
GAR. ATCH.	673 ft²
PORCH	30 ft²

**NOTE: 3D VIEWS REFLECT GENERAL  
MASSING OF THE VIEWED SPACE.  
FINAL PRODUCT MAY NOT BE EXACTLY AS SHOWN**





HOUSE- MAIN FLOOR BL - STND.


RMS  
MEASUREMENTS

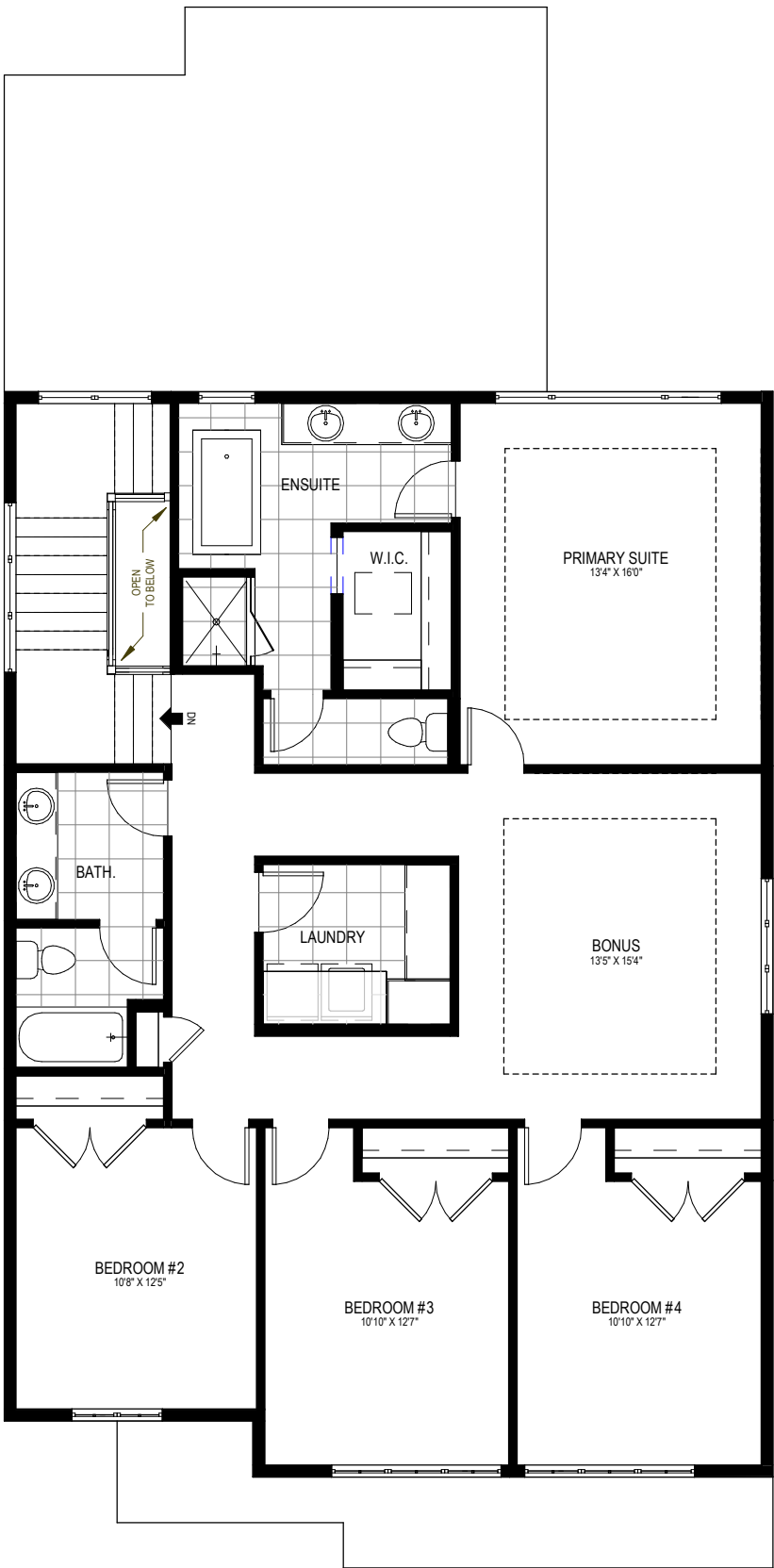
MAIN FLOOR	1359 ft²
UPPER FLOOR	1494 ft²
UPPER FLOOR STAIR	88 ft²

HOUSE TOTAL	2941 ft²
-------------	----------

BSMNT. DVLP.	0 ft²
BSMNT. STAIR	95 ft²

DECK	170 ft²
GAR. ATCH.	673 ft²
PORCH	30 ft²

JOB #: SSH-0103-013	DRAWN BY: RM	RELEASE INFO: RELEASED FOR CONSTRUCTION
MODEL: MASON	2023-03-28 10:56:01 AM	
ELEV. STYLE: CRAFTSMAN	<div><p>6010 - 12th STREET S.E. CALGARY, AB T2H 2X2 PHONE (403) 254-6499 FAX (403) 256-1911</p></div>	SHEET SIZE 11"x 17"
SPECIFICATIONS: PRESTIGE		SHEET NO. B1
MUNICIPAL/LEGAL ADDRESS: 149 South Shore View SE CALGARY, AB LOT 13, BLOCK 3, PHASE 1		THIS DRAWING, PLAN SET, BROCHURE OR RENDERING IS THE PROPERTY OF CRYSTAL CREEK HOMES INC. 6010-12TH STREET SE, CALGARY AB, T2H 2X2 ALL RIGHTS RESERVED, INCLUDING THE RIGHT TO REPRODUCE, IN WHOLE OR IN PART, IN ANY FORM WITHOUT WRITTEN CONSENT OF CRYSTAL CREEK HOME INC.



HOUSE- UPPER FLOOR BL - OPTION - 4  
BEDROOMS

JOB #: SSH-0103-013		DRAWN BY: RM		RELEASE INFO: RELEASED FOR CONSTRUCTION	
MODEL: MASON		2023-03-28 10:56:02 AM			
ELEV. STYLE: CRAFTSMAN		<div><div><div><div><div><div></div></div></div><div><div><div></div></div></div><div><div><div></div></div></div><div><div><div></div></div></div><div><div><div></div></div></div><div><div><div></div></div></div></div><div>CRYSTAL CREEK HOMES</div><div>6010 - 12th STREET S.E. CALGARY, AB T2H 2X2 PHONE (403) 254-6499 FAX (403) 256-1911</div></div></div>		SHEET SIZE 11"x 17"	
SPECIFICATIONS: PRESTIGE				SHEET NO. B2	
MUNICIPAL/LEGAL ADDRESS: 149 South Shore View SE CALGARY, AB LOT 13, BLOCK 3, PHASE 1					
THIS DRAWING, PLAN SET, BROCHURE OR RENDERING IS THE PROPERTY OF CRYSTAL CREEK HOMES INC. 6010-12TH STREET SE, CALGARY AB, T2H 2X2 ALL RIGHTS RESERVED, INCLUDING THE RIGHT TO REPRODUCE, IN WHOLE OR IN PART, IN ANY FORM WITHOUT WRITTEN CONSENT OF CRYSTAL CREEK HOME INC.					