

The Newport

46 Belvedere Green SE

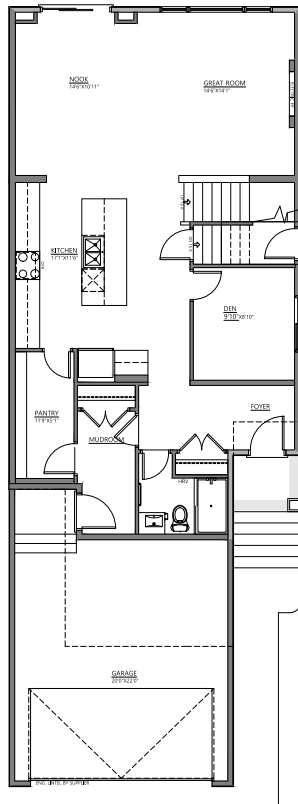
2385 SQFT

3 BEDROOMS | 2.5 BATHROOMS | 2 CAR GARAGE

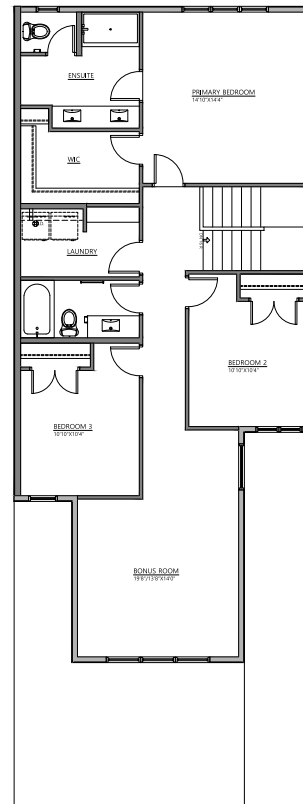


FRONT ELEVATION

PRAIRIE



MAIN FLOOR | 1163 SQFT



UPPER FLOOR | 1222 SQFT

Contact our sales team for more information: belvedere@crystalcreekhomes.ca | 403-984-3501

All elevations, floorplans and dimensions are for illustrative purposes only and are intended to convey a concept and visualization of our homes. They are subject to modifications at any time and are not to be used for contractual purposes.



crystalcreekhomes.ca