



CRYSTAL CREEK
HOMES

**QUICK
POSSESSION**



The Blake

657 Quarry Way SE

3272 SQFT

4 BEDROOMS | 3.5 BATHROOMS | 3 CAR GARAGE



crystalcreekhomes.ca

The Blake

657 Quarry Way SE

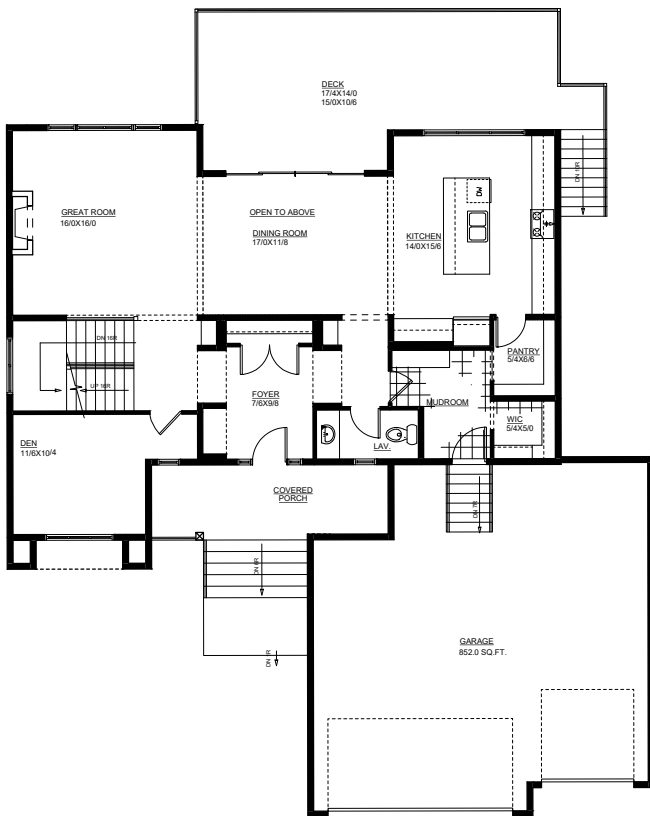
3272 SQFT

4 BEDROOMS | 3.5 BATHROOMS | 3 CAR GARAGE

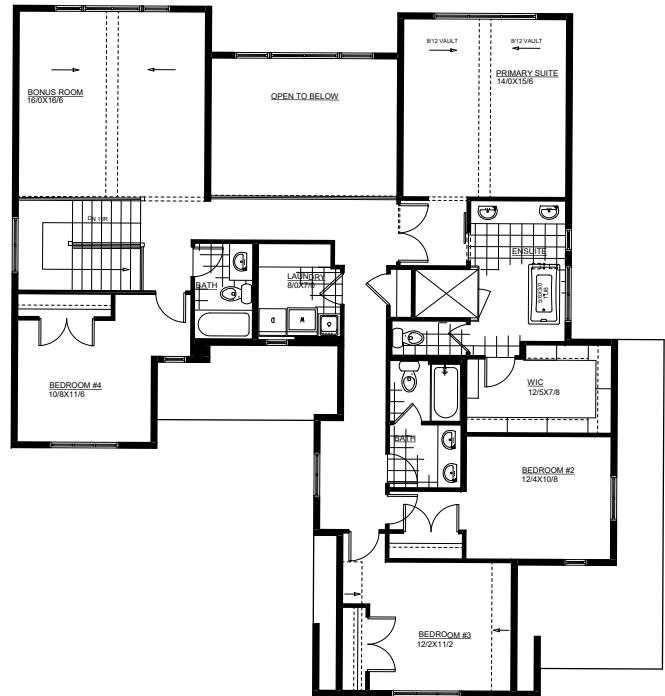


REAR ELEVATION

MODERN FARMHOUSE



MAIN FLOOR | 1425 SQFT



LOWER LEVEL | 1847 SQFT

Contact our sales team for more information: quarrypark@crystalcreekhomes.ca | 403-930-6397

All elevations, floorplans and dimensions are for illustrative purposes only and are intended to convey a concept and visualization of our homes. They are subject to modifications at any time and are not to be used for contractual purposes.



crystalcreekhomes.ca