

Basement | 936 sq. ft.

SHOWHOME LOCATION:

216 Normandy Drive SW
For additional information or
to view this home, contact:

P: 403-452-3571

E: currie@crystalcreekhomes.ca

19 YEARS

>>> —> EST. 2004

SALES MANAGER:

Shannon Lenstra

SHOWHOME HOURS:

Monday - Thursday: 2pm - 8pm

Friday: By Appointment Only

Weekends & Holidays: 12 pm - 5pm

CRYSTALCREEKHOMES.CA



THE ABIGAIL - Showhome Leaseback

216 Normandy Drive SW



Kitchen



Main Living Area



Dining



THE ABIGAIL

2310 sq. ft. | 2 Storey | 4 Bedrooms

Showhome Leaseback Program

A Crystal Creek showhome is your next smart investment that provides an opportunity to expand your portfolio. Simply purchase one of our showhomes and lease it back to us. A guaranteed tenant for the duration of your lease makes a great investment.

Ask a Crystal Creek Homes Sales Representative for more details.



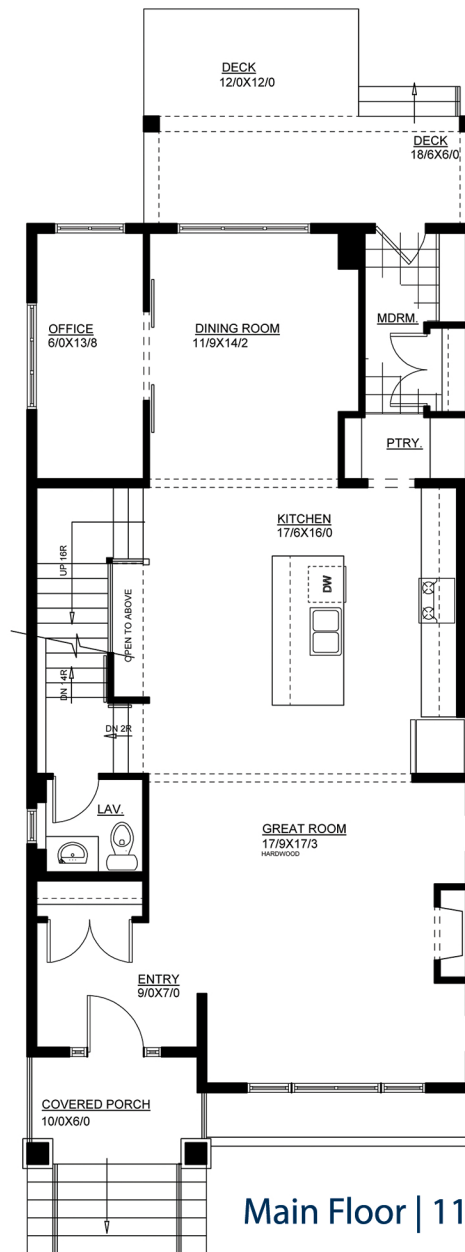
Master Bedroom



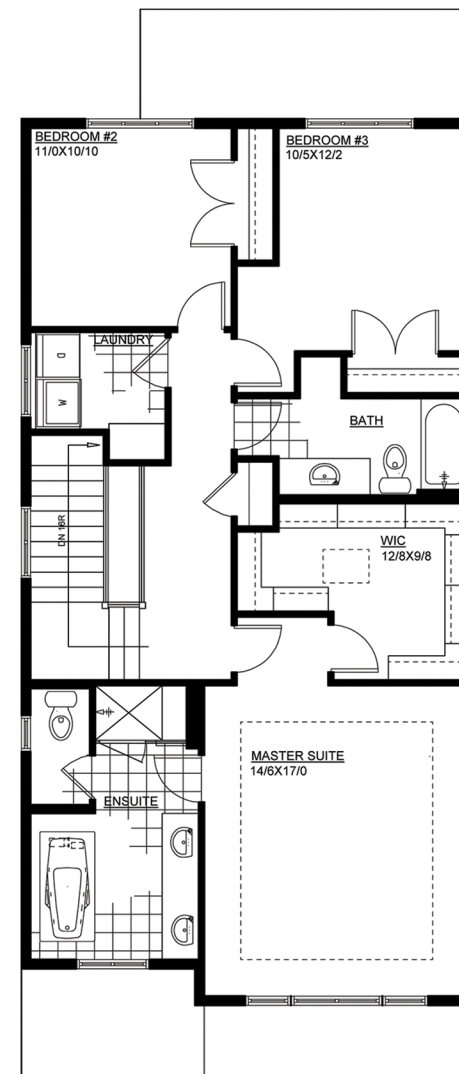
Master Ensuite



Main Floor Office



Main Floor | 1194 sq. ft.



Upper Floor | 1116 sq. ft.