

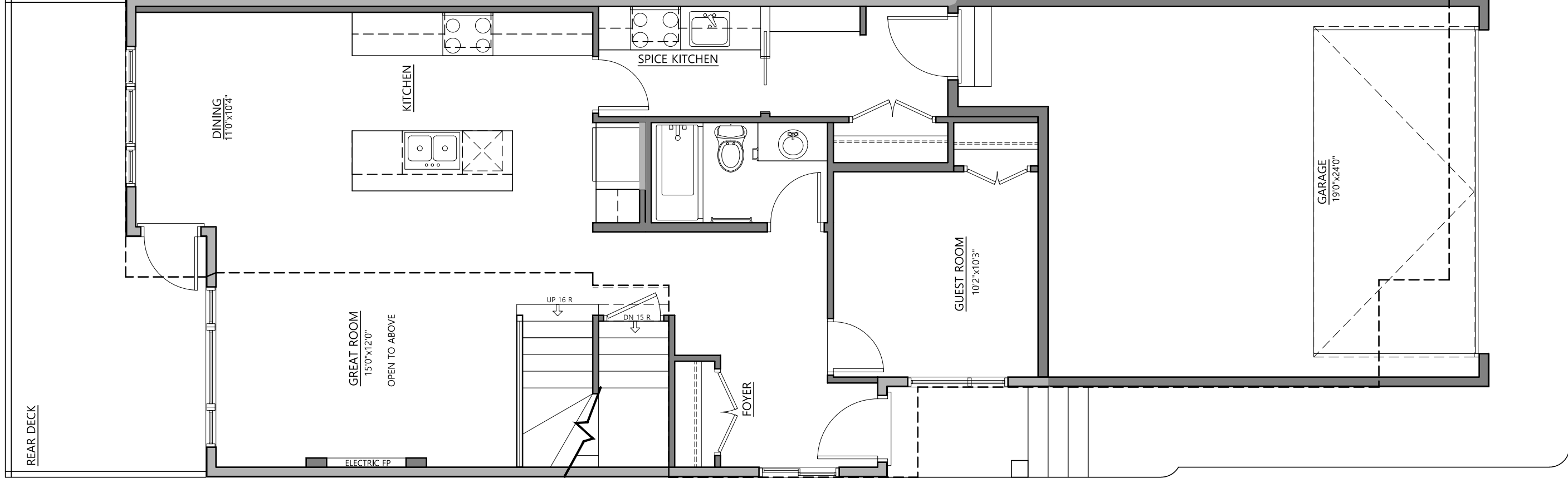
FRONT ELEVATION  

---

CONTEMPORARY

9'1" MAIN FLOOR PLAN - SPICE KITCHEN - FULL BATH OPTION  
995 SQ.FT.

236 BELVEDERE DRIVE SE



8'1" UPPER FLOOR PLAN - 4 PIECE ENSUITE/  
JACK N JILL BATH/ 3 BEDROOM

1173 SQ.FT.

236 BELVEDERE DRIVE SE

