



19 YEARS
→ EST. 2004

crystalcreekhomes.ca



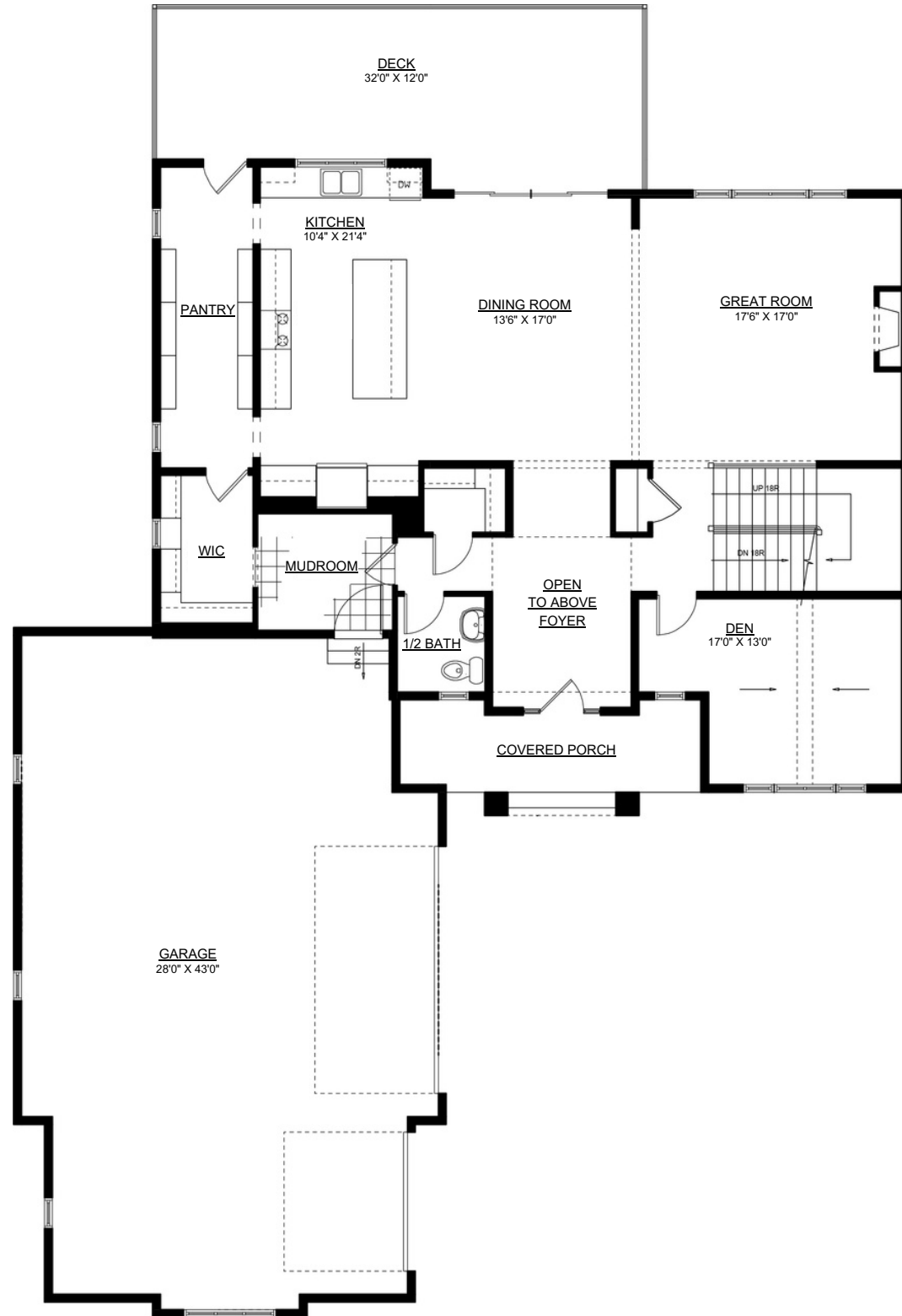
The Holden

3.5 Bath
3 Bed
3487 sqft

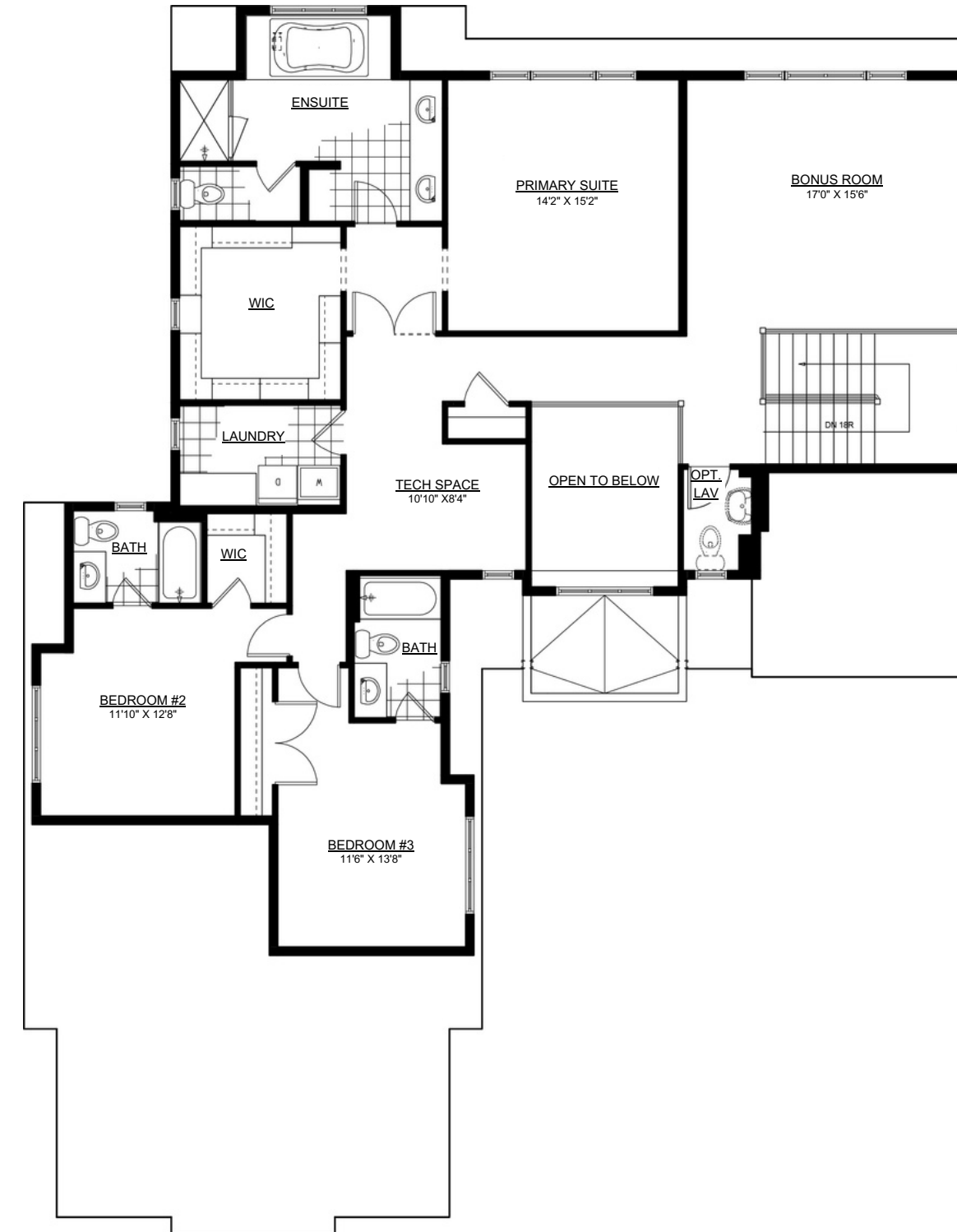
The Holden

3487 sqft

Main Floor | 1683 sqft



Upper Level | 1804 sqft



Available Elevations:

• Please confirm with our Sales Team which elevations are available in your desired community.



Arts & Crafts