



**CRYSTAL CREEK**  
HOMES

**QUICK  
POSSESSION**



## **The Lawrence**

327 Normandy Dr SW

**3702** SQFT

5 BEDROOMS | 4.5 BATHROOMS | 2 CAR GARAGE | BASEMENT DEVELOPEMENT (804 SQFT)



[crystalcreekhomes.ca](https://crystalcreekhomes.ca)

# The Lawrence

327 Normandy Dr SW

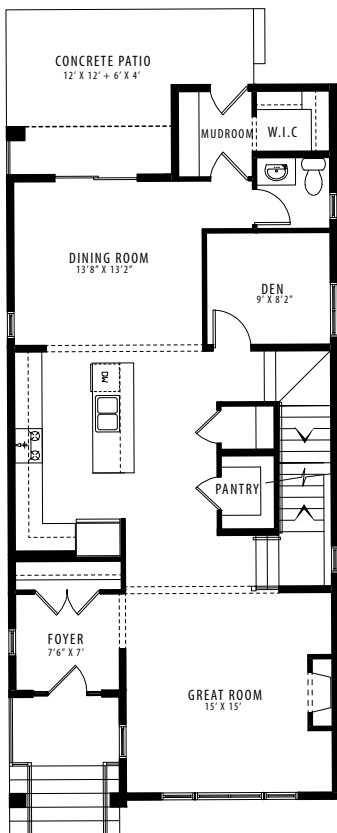
3702 SQFT

5 BEDROOMS | 4.5 BATHROOMS | 2 CAR GARAGE | BASEMENT DEVELOPEMENT

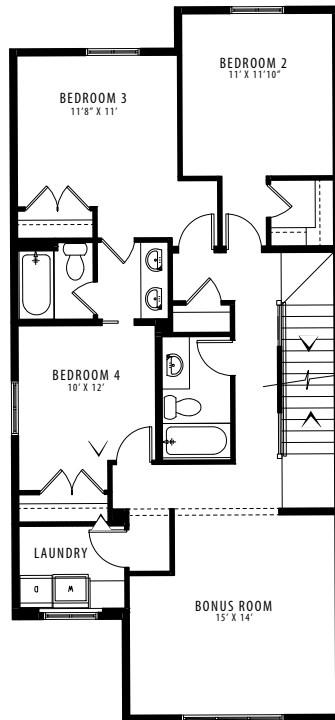


GARAGE ELEVATION

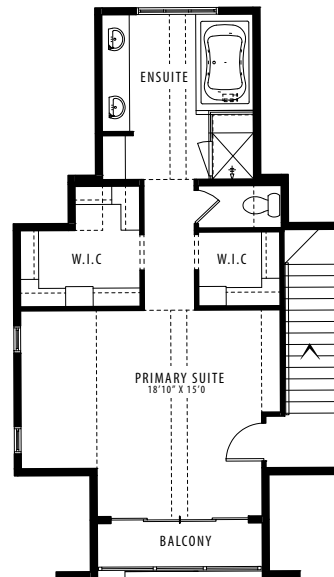
ARTS AND CRAFTS



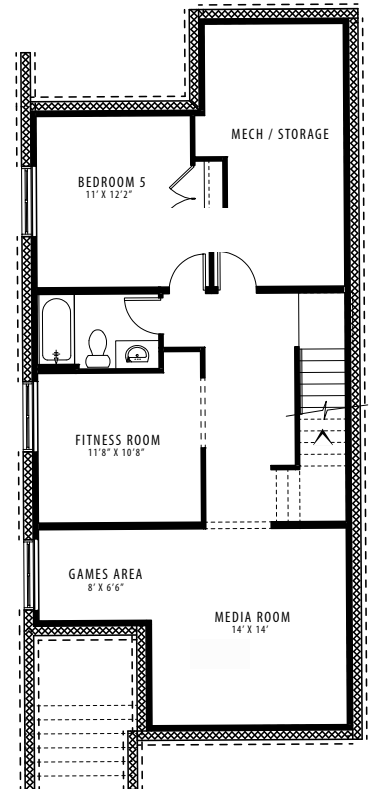
MAIN FLOOR | 1100 SQFT



UPPER FLOOR | 1152 SQFT



UPPER FLOOR | 636 SQFT



LOWER LEVEL | 804 SQFT

Contact our sales team for more information: [currie@crystalcreekhomes.ca](mailto:currie@crystalcreekhomes.ca) | 403-452-3571

All elevations, floorplans and dimensions are for illustrative purposes only and are intended to convey a concept and visualization of our homes. They are subject to modifications at any time and are not to be used for contractual purposes.



[crystalcreekhomes.ca](http://crystalcreekhomes.ca)