

The Orchid 20

AVAILABLE ELEVATIONS



FRONT ELEVATION

CRAFTSMAN



FRONT ELEVATION

PRAIRIE



FRONT ELEVATION

MODERN



FRONT ELEVATION

MODERN FARMHOUSE



FRONT ELEVATION

QUAINT QUEBECOIS

Please confirm with our Sales Team which elevations are available in your desired community. All elevations, floorplans and dimensions are for illustrative purposes only and are intended to convey a concept and visualization of our homes.

They are subject to modifications at any time and are not to be used for contractual purposes. Square footage noted reflects Residential Measurement Standard.



The Orchid 20

CRAFTSMAN

1,810 SQFT

4 BEDROOMS | 3 BATHROOMS



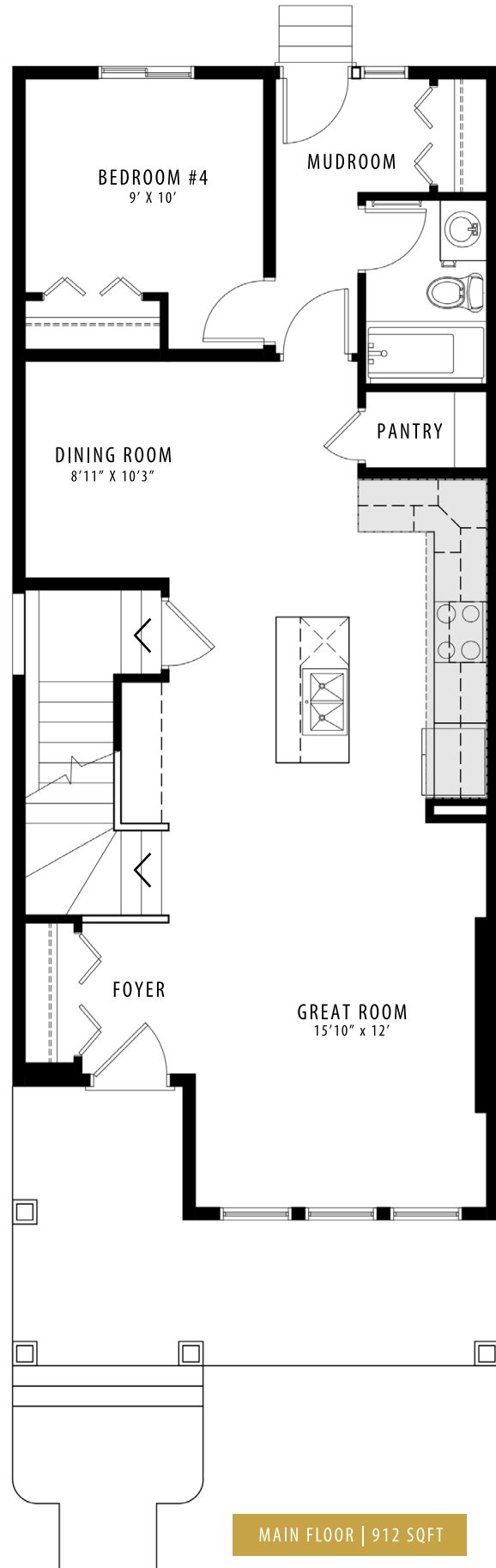
crystalcreekhomes.ca

crystalcreekhomes.ca

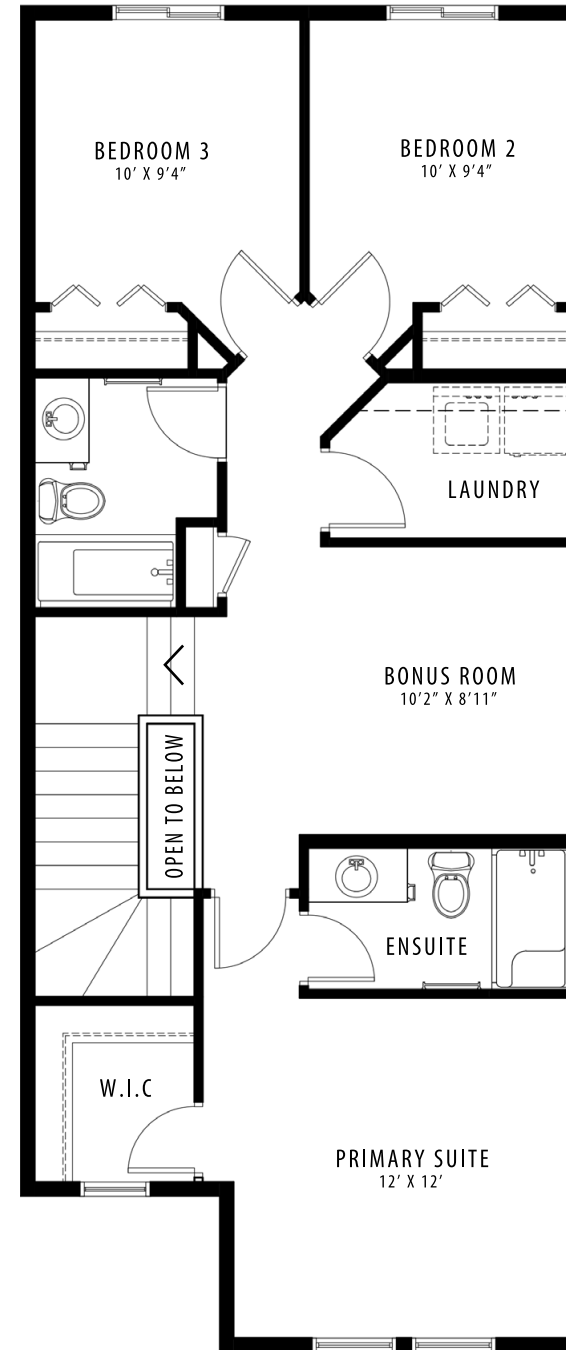
The Orchid 20

CRAFTSMAN

1,810 SQFT



MAIN FLOOR | 912 SQFT



UPPER FLOOR | 898 SQFT