

The Easton 36



Please confirm with our Sales Team which elevations are available in your desired community. All elevations, floor plans and dimensions are for illustrative purposes only and are intended to convey a concept and visualization of our homes. They are subject to modifications at any time and are not to be used for contractual purposes. Square footage noted reflects Residential Measurement Standard.



crystalcreekhomes.ca



The Easton 36

WEST COAST MODERN

3175 SQ FT

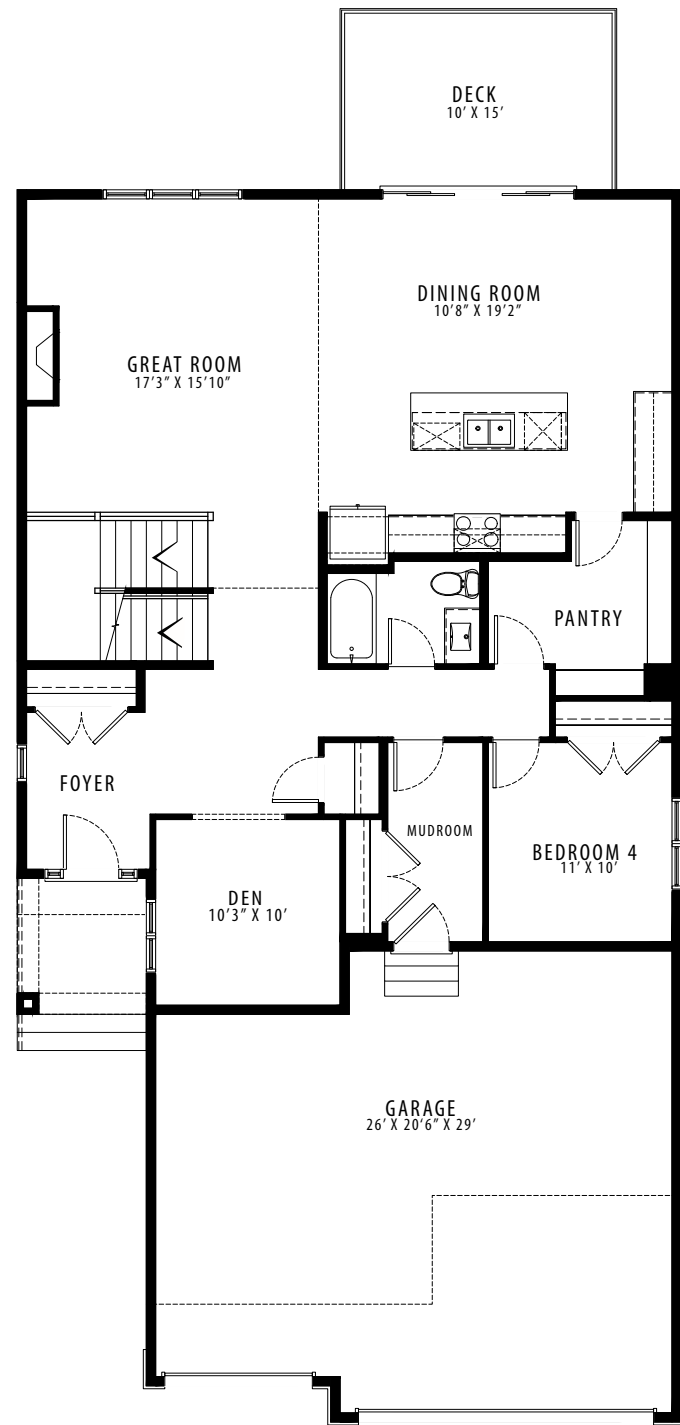
4 BEDROOMS | 3 BATHROOMS | 3 CAR GARAGE

crystalcreekhomes.ca

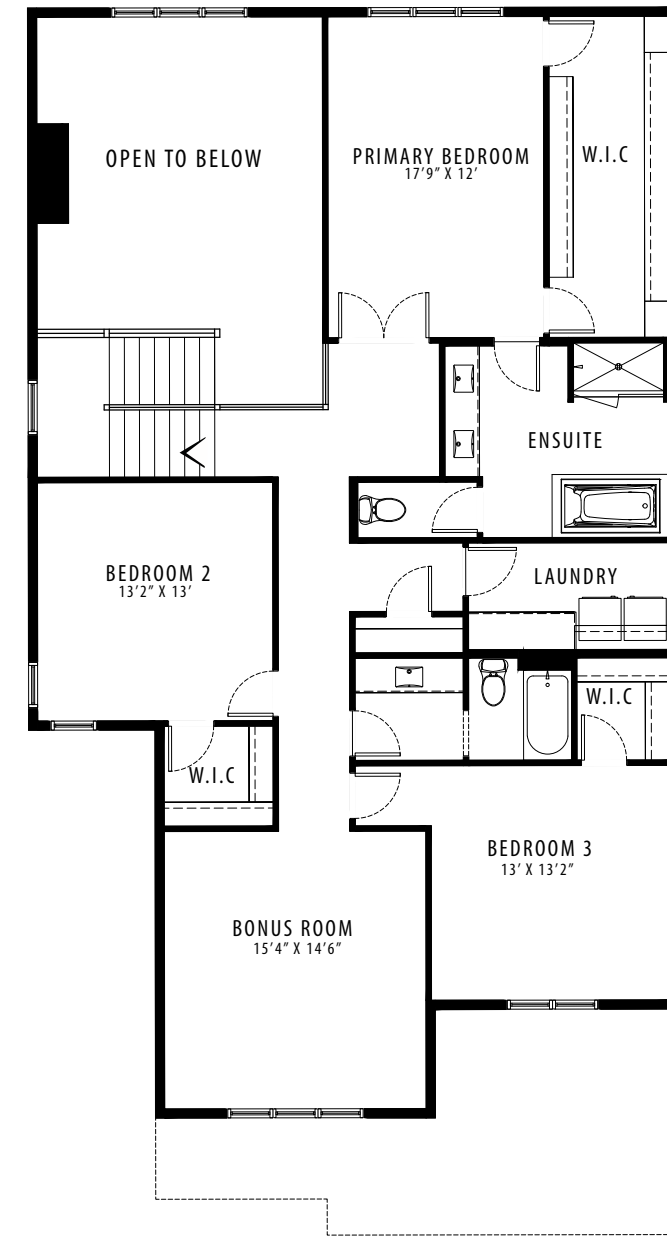
The Easton 36

WEST COAST MODERN

3175 SQ FT



MAIN FLOOR | 1522 SQ FT



UPPER FLOOR | 1653 SQ FT