

# The Grayson 38



Please confirm with our Sales Team which elevations are available in your desired community. All elevations, floor plans and dimensions are for illustrative purposes only and are intended to convey a concept and visualization of our homes. They are subject to modifications at any time and are not to be used for contractual purposes. Square footage noted reflects Residential Measurement Standard.



[crystalcreekhomes.ca](http://crystalcreekhomes.ca)



## The Grayson 38

MODERN PRAIRIE

2910 SQ FT

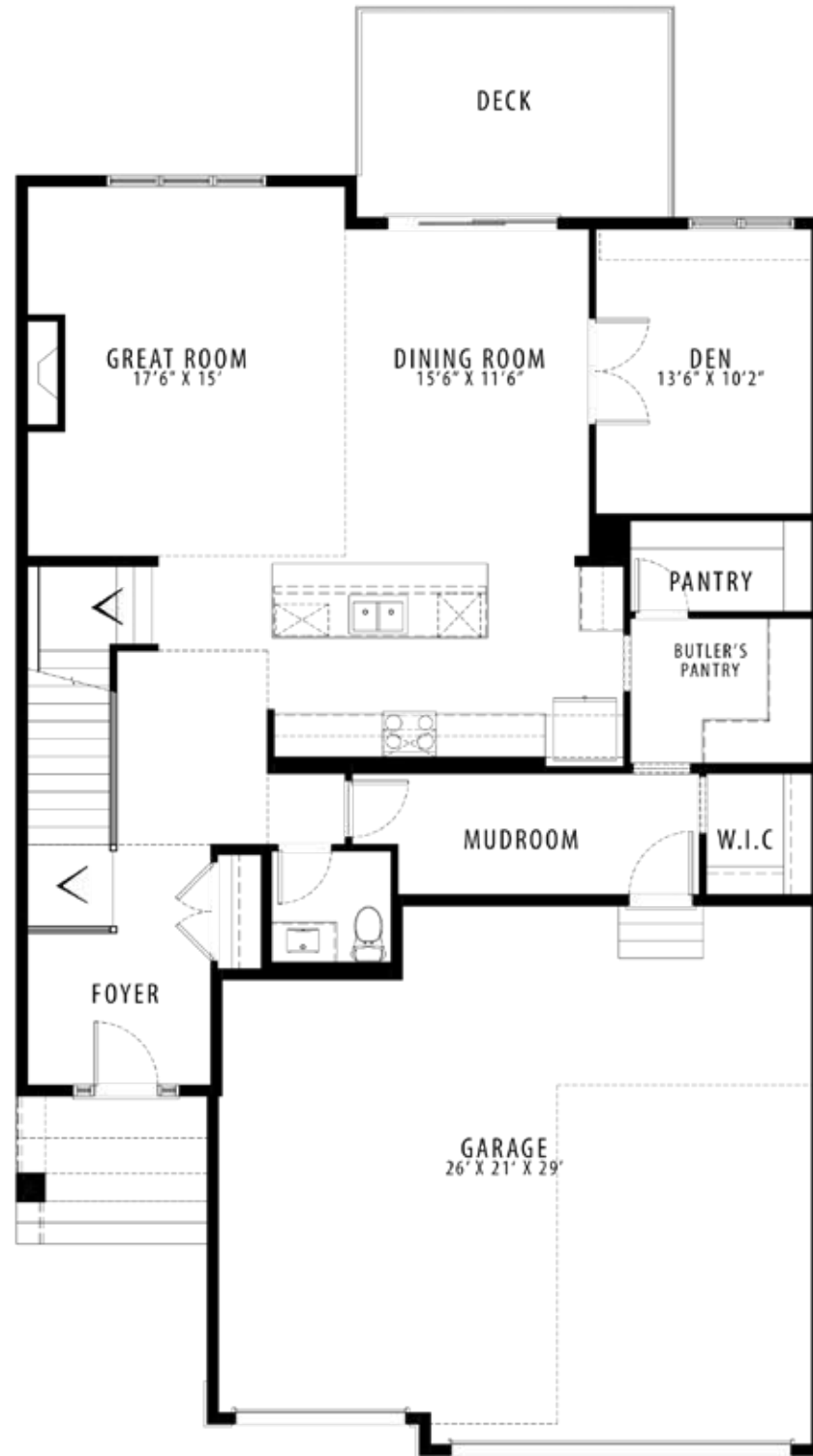
3 BEDROOMS | 2.5 BATHROOMS | 2 CAR GARAGE

[crystalcreekhomes.ca](http://crystalcreekhomes.ca)

# The Grayson 38

MODERN PRAIRIE

2910 SQ FT



MAIN FLOOR | 1384 SQ FT



UPPER FLOOR | 1526 SQ FT