

# The Mason 34



Please confirm with our Sales Team which elevations are available in your desired community. All elevations, floor plans and dimensions are for illustrative purposes only and are intended to convey a concept and visualization of our homes. They are subject to modifications at any time and are not to be used for contractual purposes. Square footage noted reflects Residential Measurement Standard.



[crystalcreekhomes.ca](http://crystalcreekhomes.ca)



# The Mason 34

MODERN FARMHOUSE

**2863** SQ FT

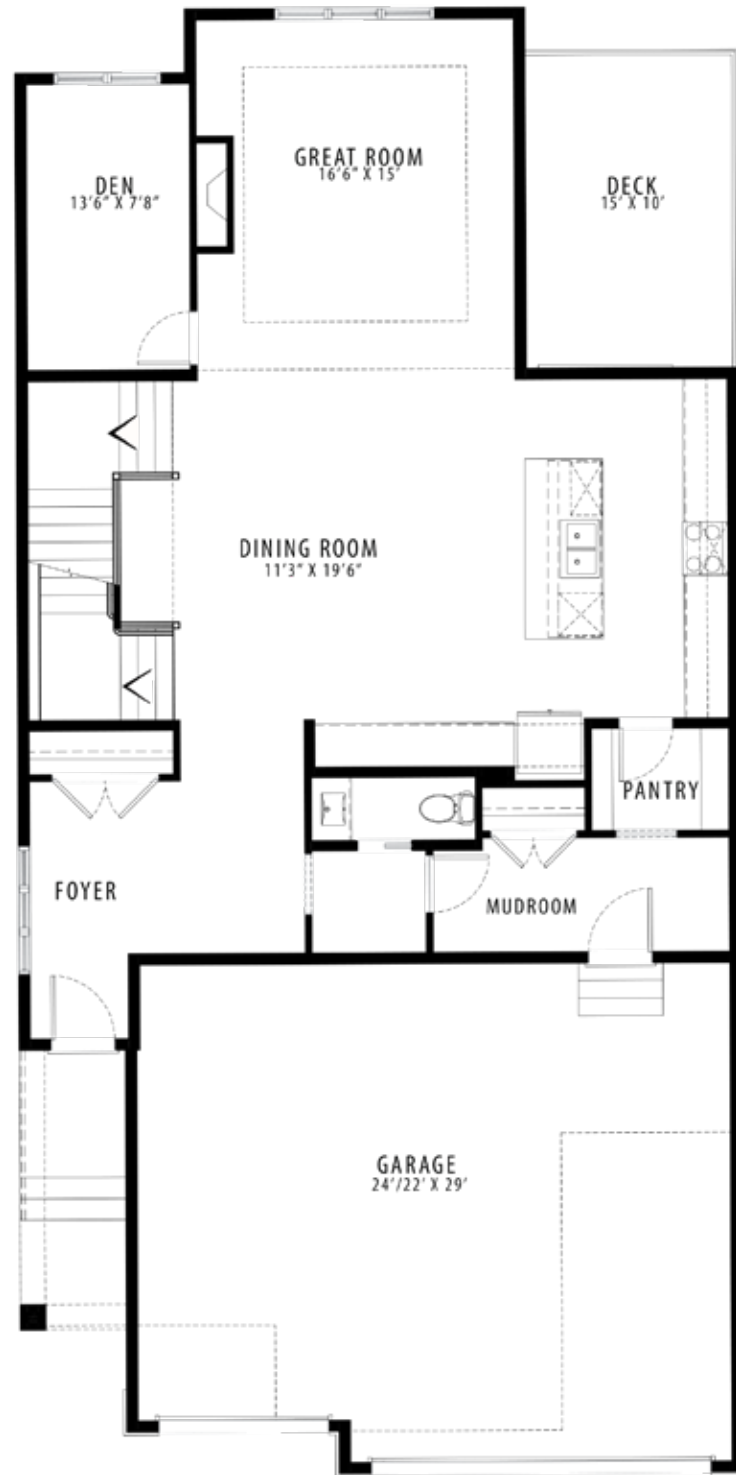
3 BEDROOMS | 2.5 BATHROOMS | 3 CAR GARAGE

[crystalcreekhomes.ca](http://crystalcreekhomes.ca)

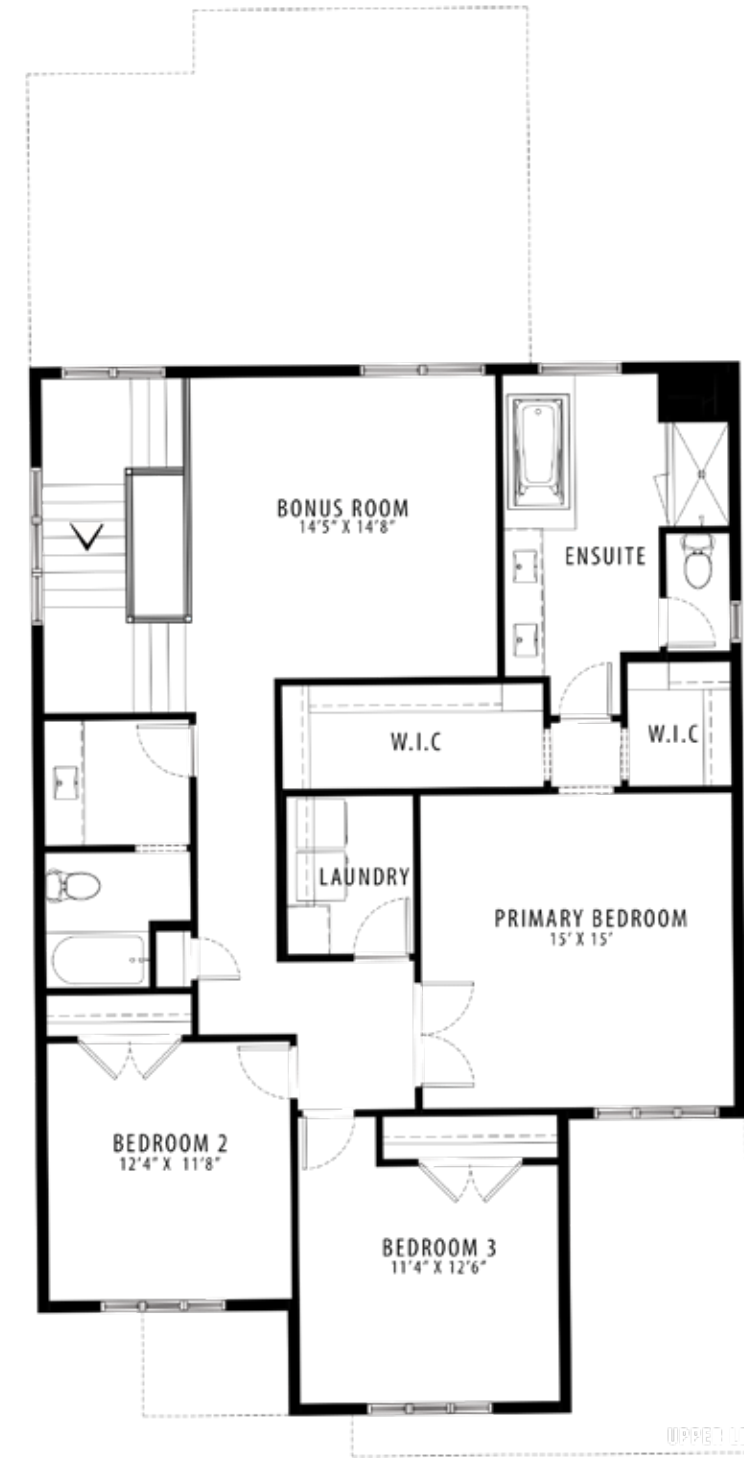
# The Mason 34

MODERN FARMHOUSE

2863 SQ FT



MAIN FLOOR | 1359 SQ FT



UPPER FLOOR | 1504 SQ FT