

# The Sheffield 34



Please confirm with our Sales Team which elevations are available in your desired community. All elevations, floor plans and dimensions are for illustrative purposes only and are intended to convey a concept and visualization of our homes. They are subject to modifications at any time and are not to be used for contractual purposes. Square footage noted reflects Residential Measurement Standard.



[crystalcreekhomes.ca](http://crystalcreekhomes.ca)



## The Sheffield 34

PRAIRIE

2775 SQ FT

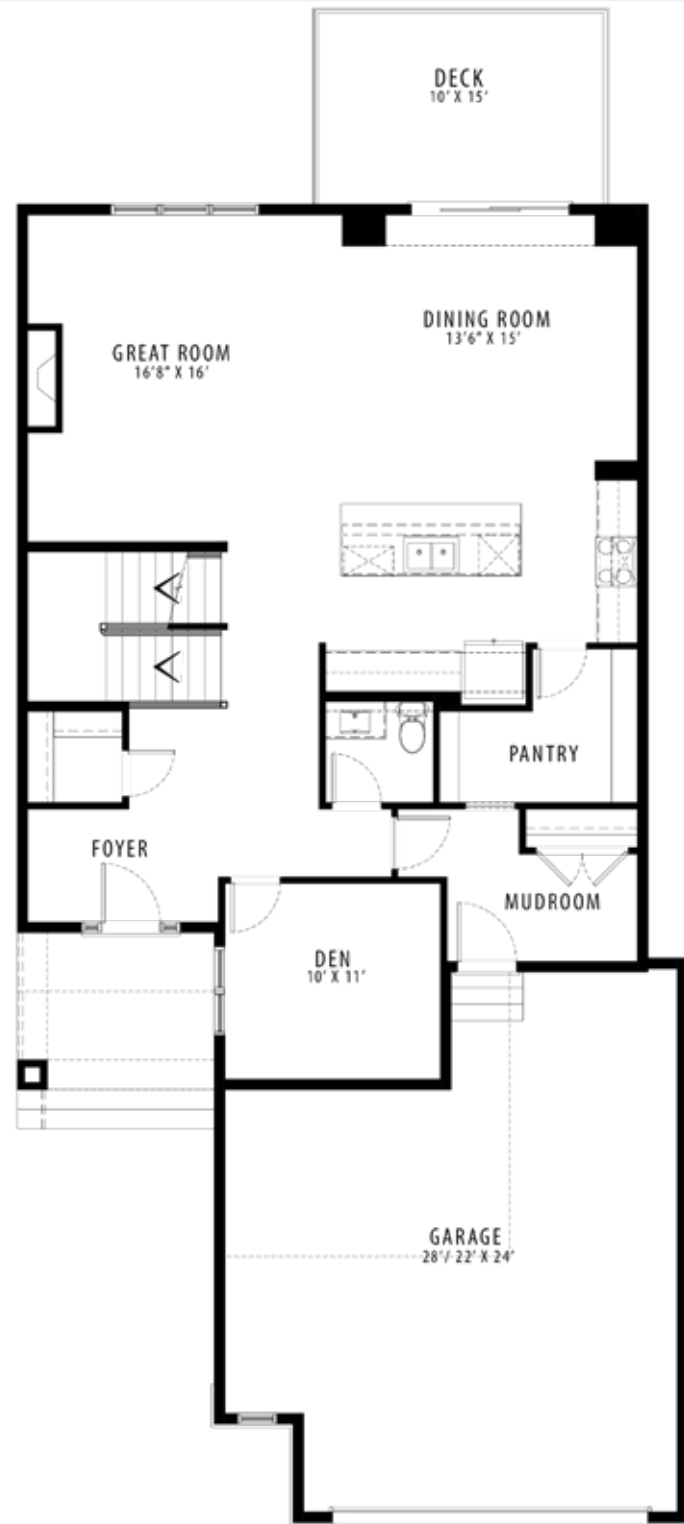
3 BEDROOMS | 2.5 BATHROOMS | 2 CAR TANDEM GARAGE

[crystalcreekhomes.ca](http://crystalcreekhomes.ca)

# The Sheffield 34

CRAFTSMAN

2775 SQ FT



MAIN FLOOR | 1300 SQ FT



UPPER FLOOR | 1475 SQ FT