

# The Waterford 60



Please confirm with our Sales Team which elevations are available in your desired community. All elevations, floor plans and dimensions are for illustrative purposes only and are intended to convey a concept and visualization of our homes. They are subject to modifications at any time and are not to be used for contractual purposes. Square footage noted reflects Residential Measurement Standard.



[crystalcreekhomes.ca](http://crystalcreekhomes.ca)



# The Waterford 60

MODERN PRAIRIE

**4693** SQ FT

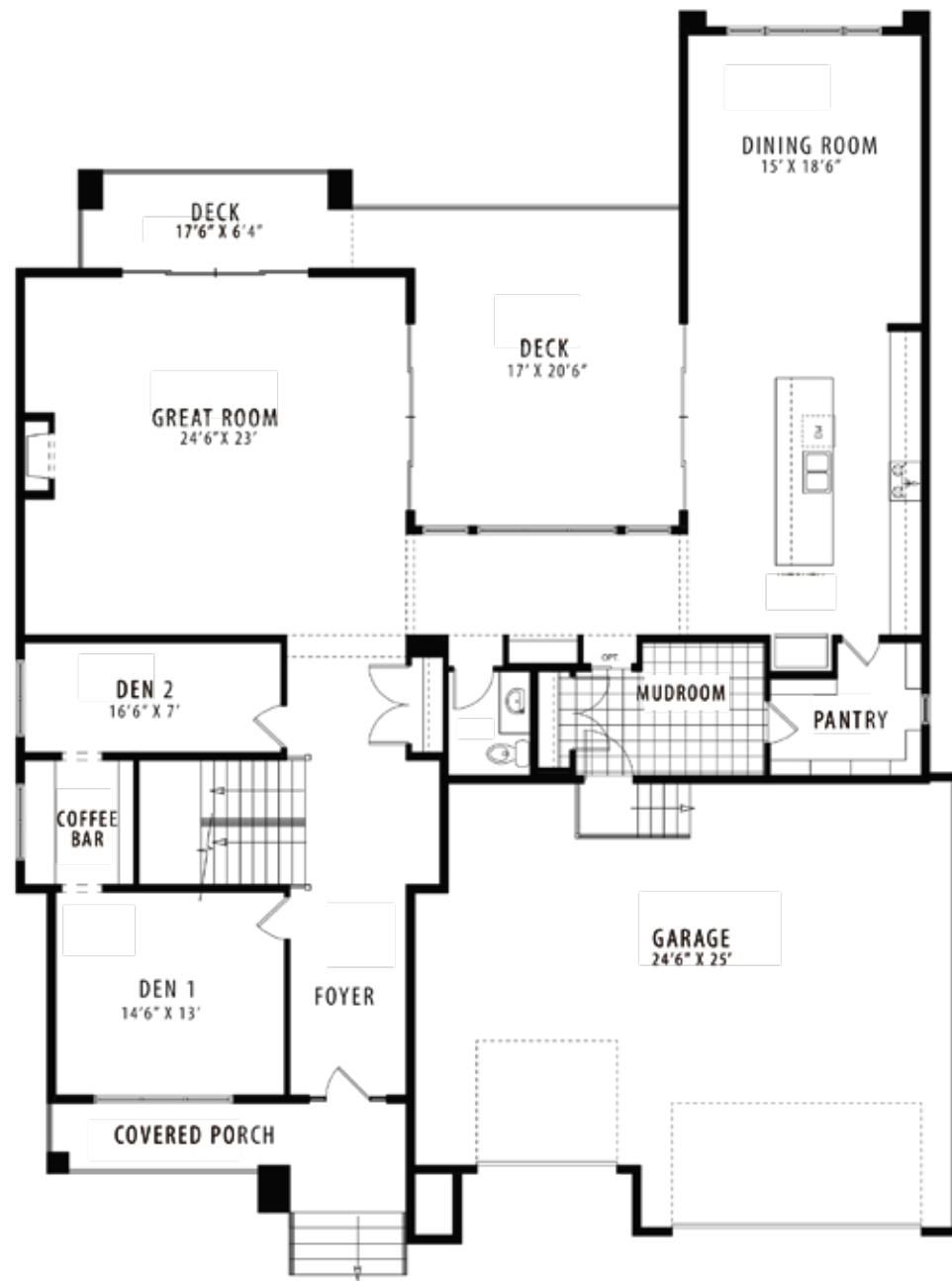
3 BEDROOMS | 3 FULL & 2 HALF BATHROOMS | 3 CAR GARAGE

[crystalcreekhomes.ca](http://crystalcreekhomes.ca)

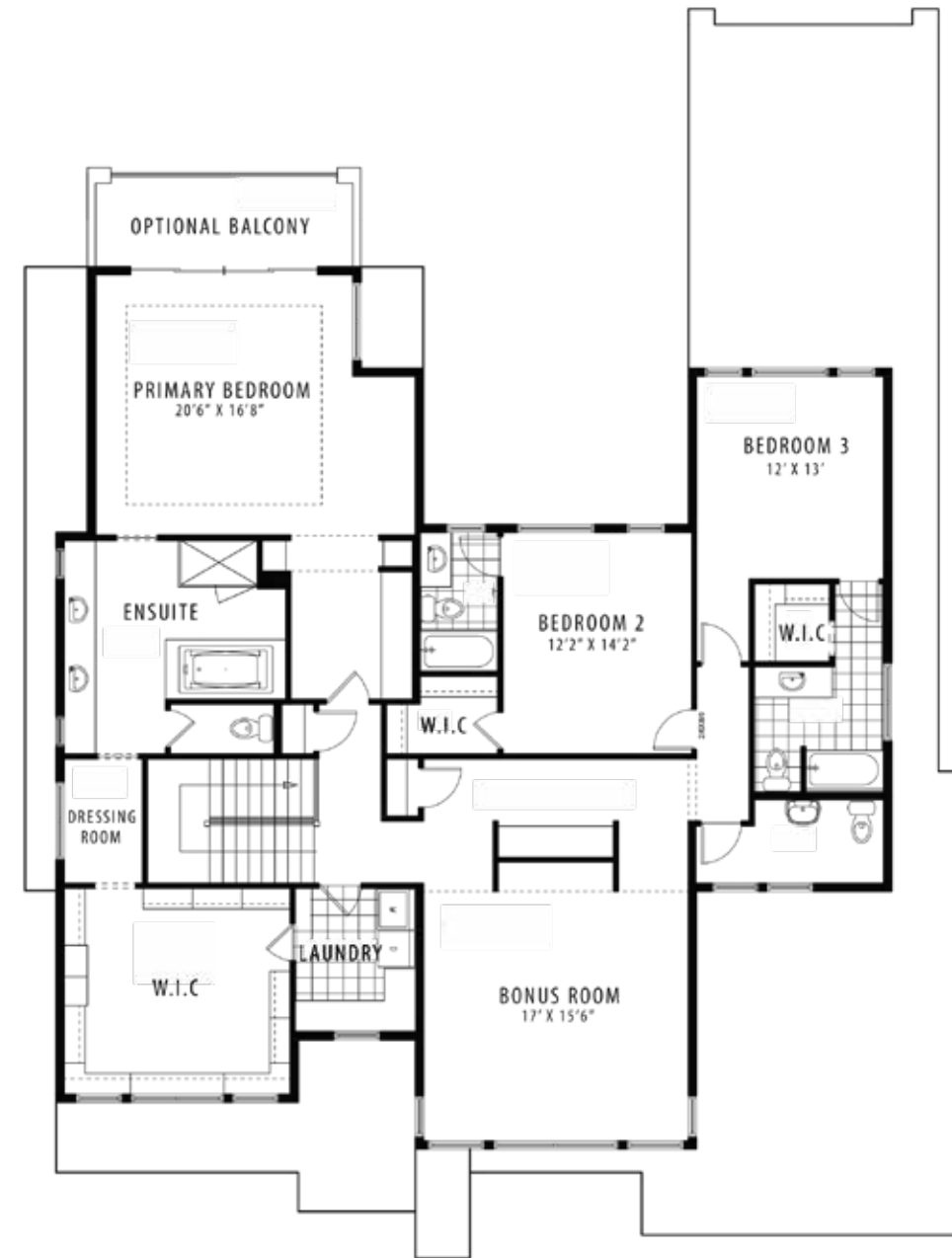
# The Waterford 60

MODERN PRAIRIE

4693 SQ FT



MAIN FLOOR | 2409 SQ FT



UPPER FLOOR | 2284 SQ FT