



CRYSTAL CREEK
HOMES

**QUICK
POSSESSION**



The Somerton

637 Quarry Way SE

4503 SQFT

5 BEDROOMS | 4.5 BATHROOMS | BASEMENT DEVELOPMENT (1198 SQ FT)

crystalcreekhomes.ca

The Somerton

637 Quarry Way SE

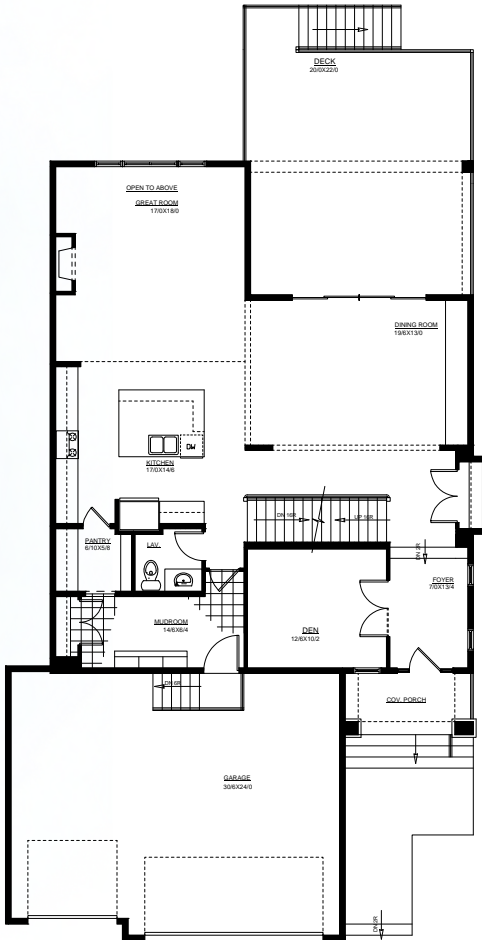
4503 SQFT

5 BEDROOMS | 4.5 BATHROOMS | BASEMENT DEVELOPMENT (1198)

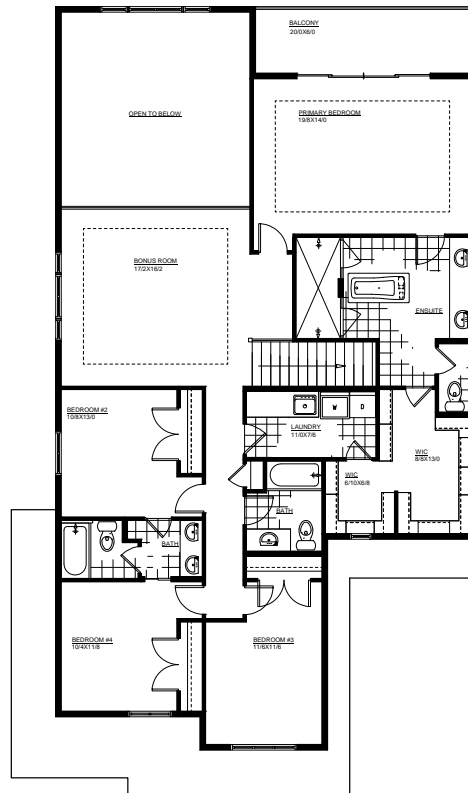


REAR ELEVATION

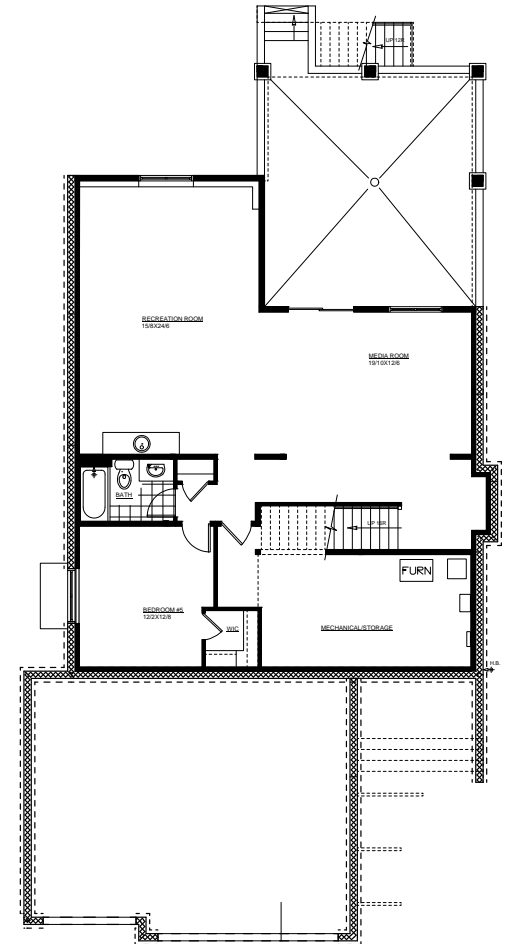
MODERN PRAIRIE



UPPER FLOOR | 1517 SQFT



MAIN FLOOR | 1788 SQFT



LOWER LEVEL | 1198 SQFT

Contact our sales team for more information: quarrypark@crystalcreekhomes.ca | 403-930-6397

All elevations, floorplans and dimensions are for illustrative purposes only and are intended to convey a concept and visualization of our homes. They are subject to modifications at any time and are not to be used for contractual purposes.



crystalcreekhomes.ca