

# The Pine 22

## AVAILABLE ELEVATIONS



FRONT ELEVATION

**PRAIRIE**



FRONT ELEVATION

**CRAFTSMAN**



FRONT ELEVATION

**MODERN FARMHOUSE**



FRONT ELEVATION

**MODERN**

Please confirm with our Sales Team which elevations are available in your desired community. All elevations, floorplans and dimensions are for illustrative purposes only and are intended to convey a concept and visualization of our homes.

They are subject to modifications at any time and are not to be used for contractual purposes. Square footage noted reflects Residential Measurement Standard.



# The Pine 22

MODERN

**1,755 SQFT**

3 BEDROOMS | 2.5 BATHROOMS | 2 CAR GARAGE



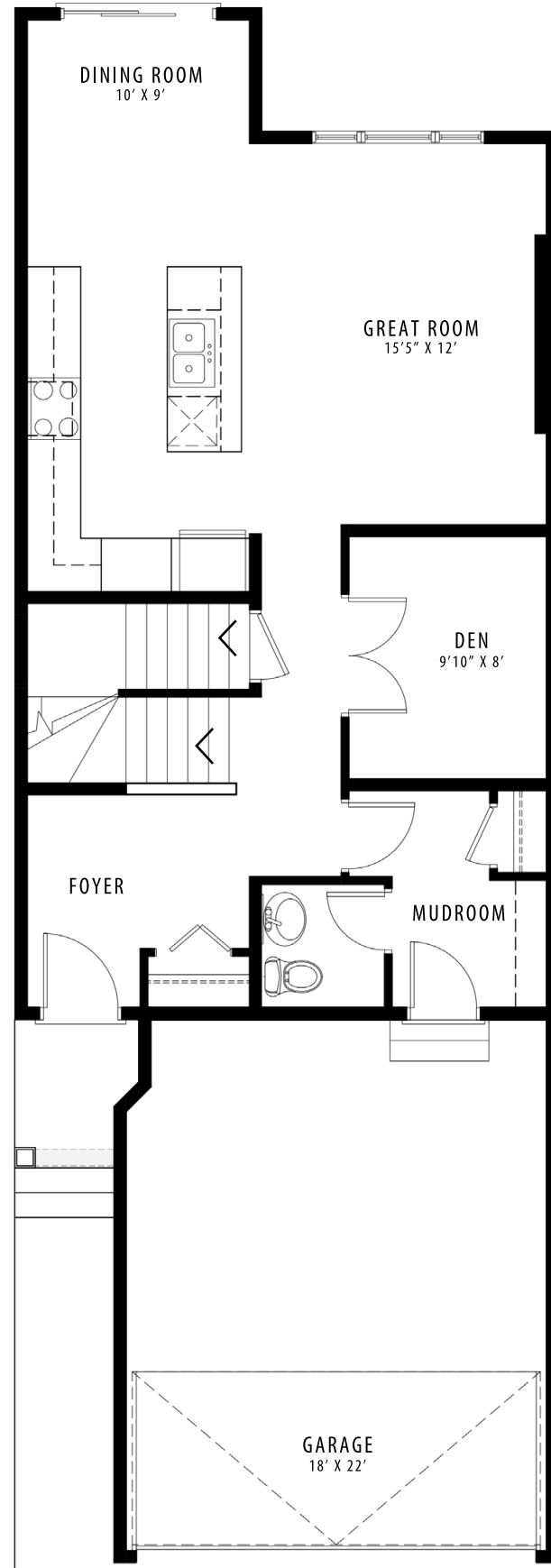
[crystalcreekhomes.ca](http://crystalcreekhomes.ca)

[crystalcreekhomes.ca](http://crystalcreekhomes.ca)

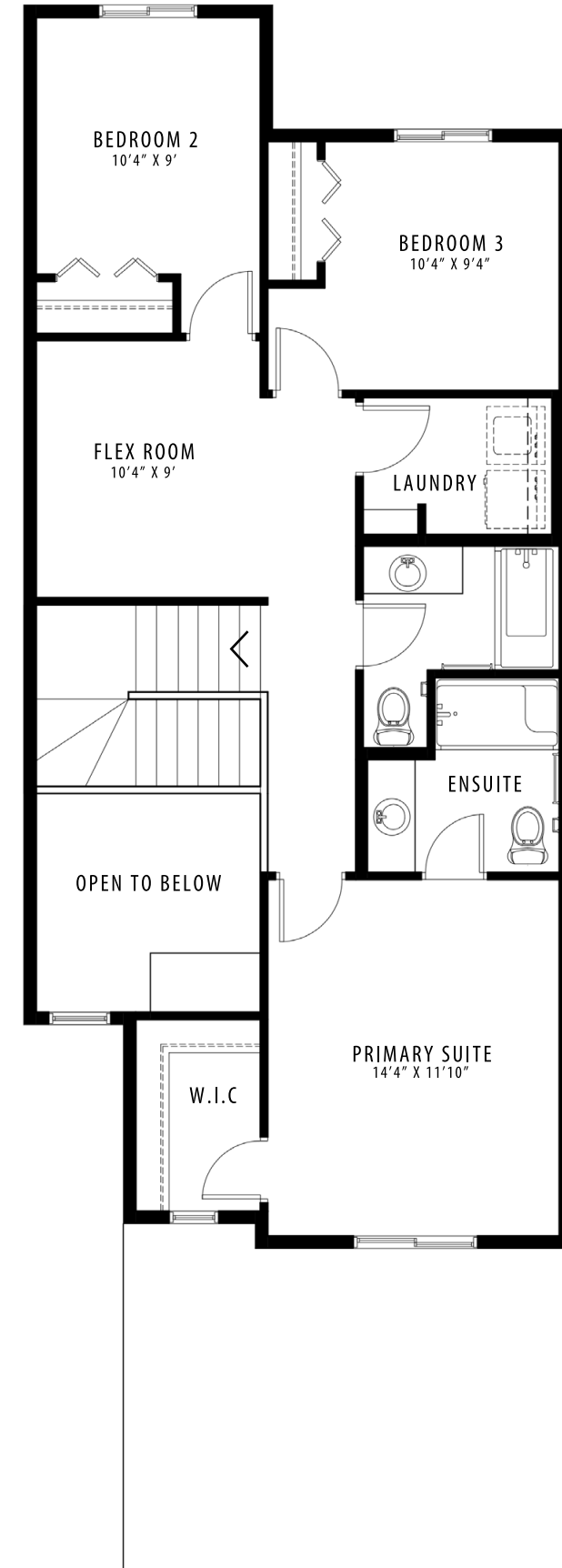
# The Pine 22

MODERN

1,755 SQFT



MAIN FLOOR | 842 SQFT



UPPER FLOOR | 913 SQFT