



Quick Possession Home



CRYSTAL CREEK
HOMES
19 YEARS
EST. 2004

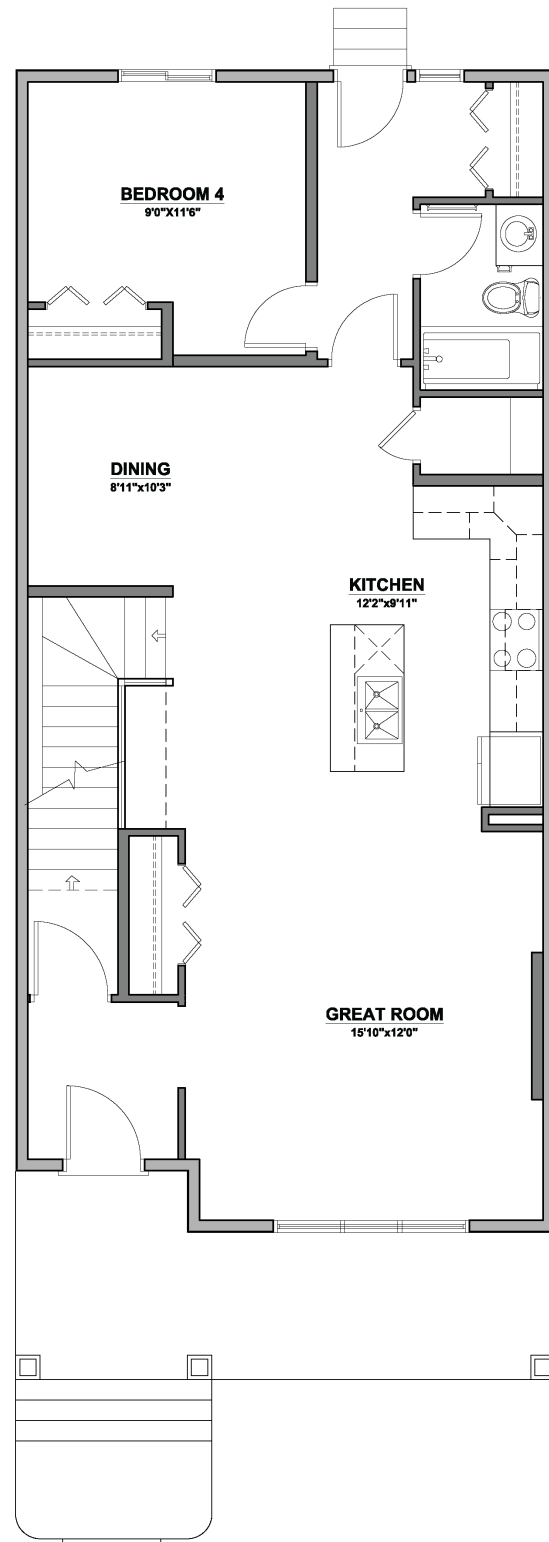
CRYSTAL CREEK
HOMES

The Orchid
7009 52 Ave
Beaumont

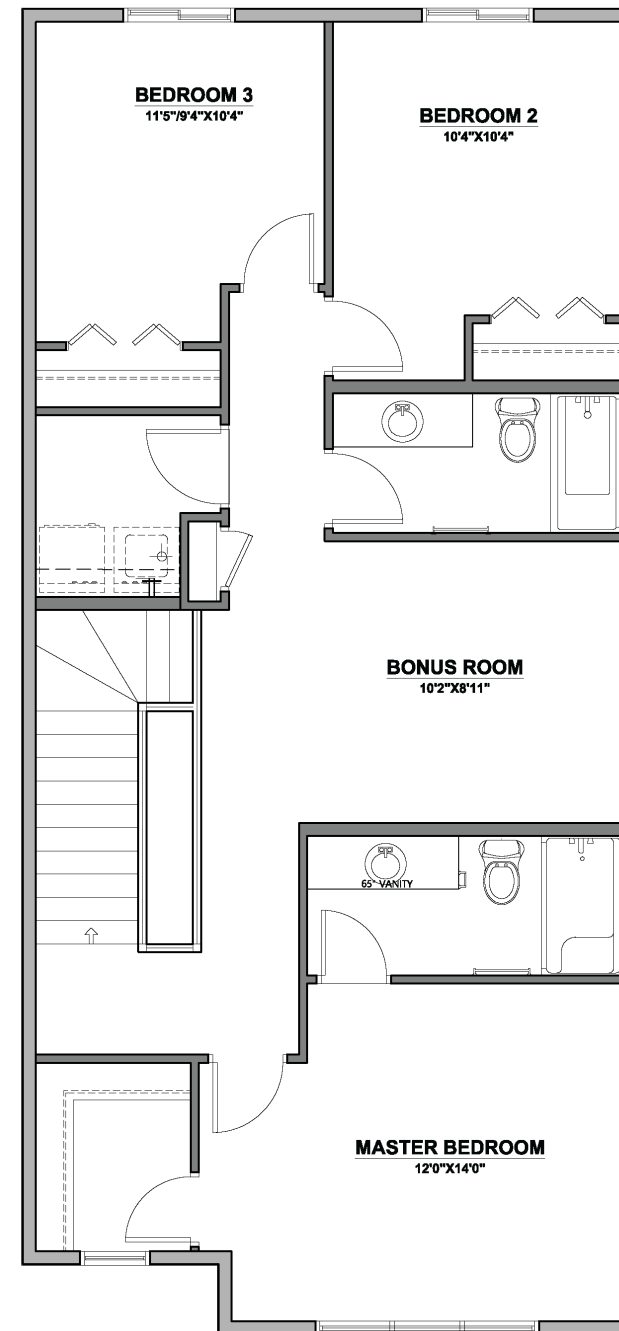
3
4
1982 sqft

The Orchid

7009 52 Ave - 1982 sqft (Extended Version)



Main Floor | 1028 sqft



Upper Level | 954 sqft

Elevation: Prairie Veranda



This Home Features:

- Extended model - widened by 2 feet (almost an additional 200 sqft)
- Located across from park
- Exterior Colour - Royal Redwood
- Interior colour - Chillagoe
- One bedroom + full bathroom on main floor
- Transom window in foyer
- 9' main floor ceiling
- Transom window in great room
- Waterline to fridge
- 42" cabinets
- Full depth cabinet above fridge
- 12" soffits above kitchen cabinets
- Metal spindled railings on stairs
- Front basement suite option

All elevations, floorplans and dimensions are for illustrative purposes only and are intended to convey a concept and visualization of our homes. They are subject to modifications at any time and are not to be used for contractual purposes.