

The Onyx 20

AVAILABLE ELEVATIONS



FRONT ELEVATION

PRAIRIE



FRONT ELEVATION

MODERN



FRONT ELEVATION

MODERN FARMHOUSE



FRONT ELEVATION

CRAFTSMAN

Please confirm with our Sales Team which elevations are available in your desired community. All elevations, floorplans and dimensions are for illustrative purposes only and are intended to convey a concept and visualization of our homes.

They are subject to modifications at any time and are not to be used for contractual purposes. Square footage noted reflects Residential Measurement Standard.



The Onyx 20

MODERN

1,618 SQFT/UNIT

3 BEDROOMS | 2.5 BATHROOMS | 2 CAR GARAGE | PER UNIT



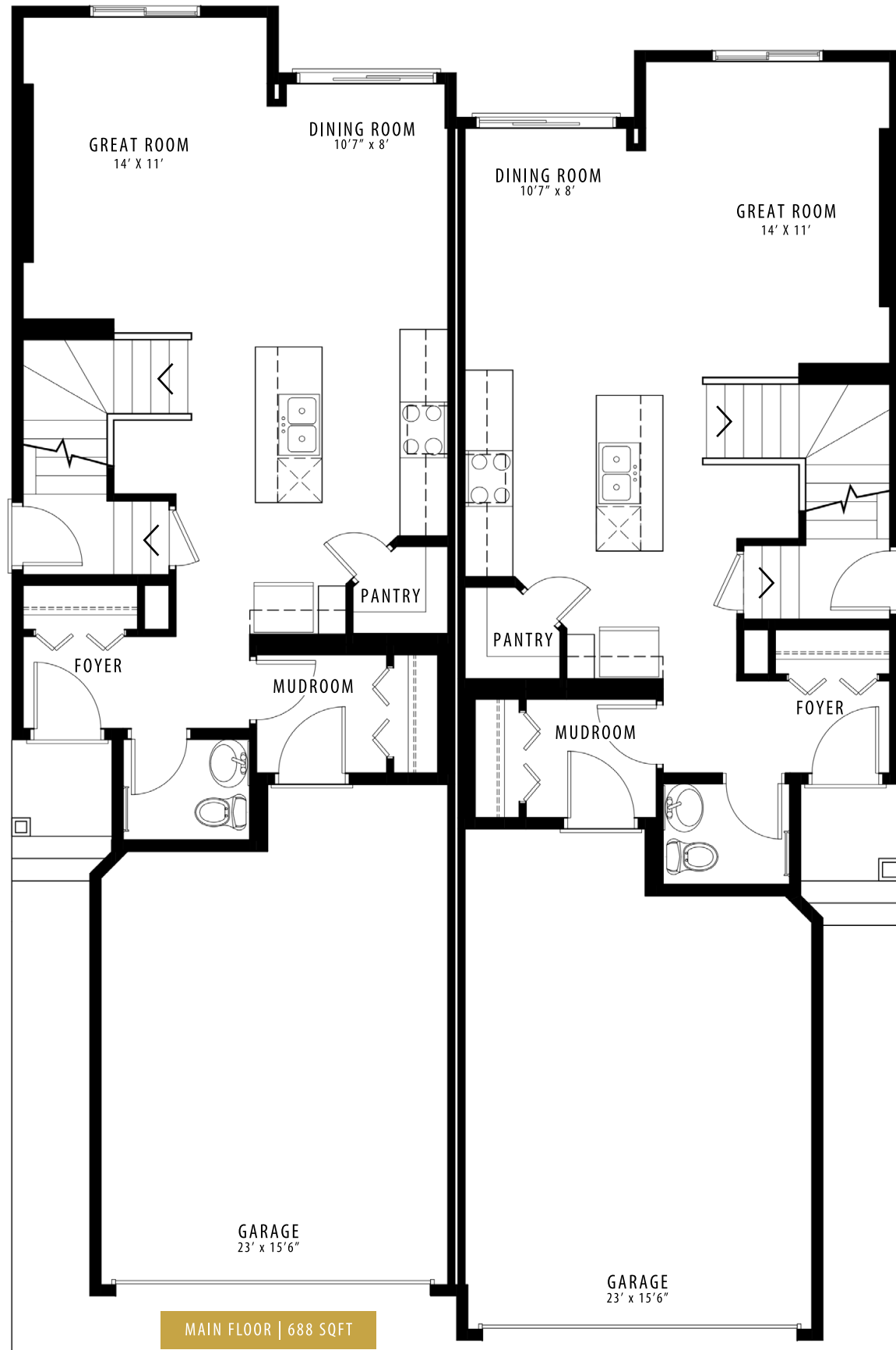
crystalcreekhomes.ca

crystalcreekhomes.ca

The Onyx 20

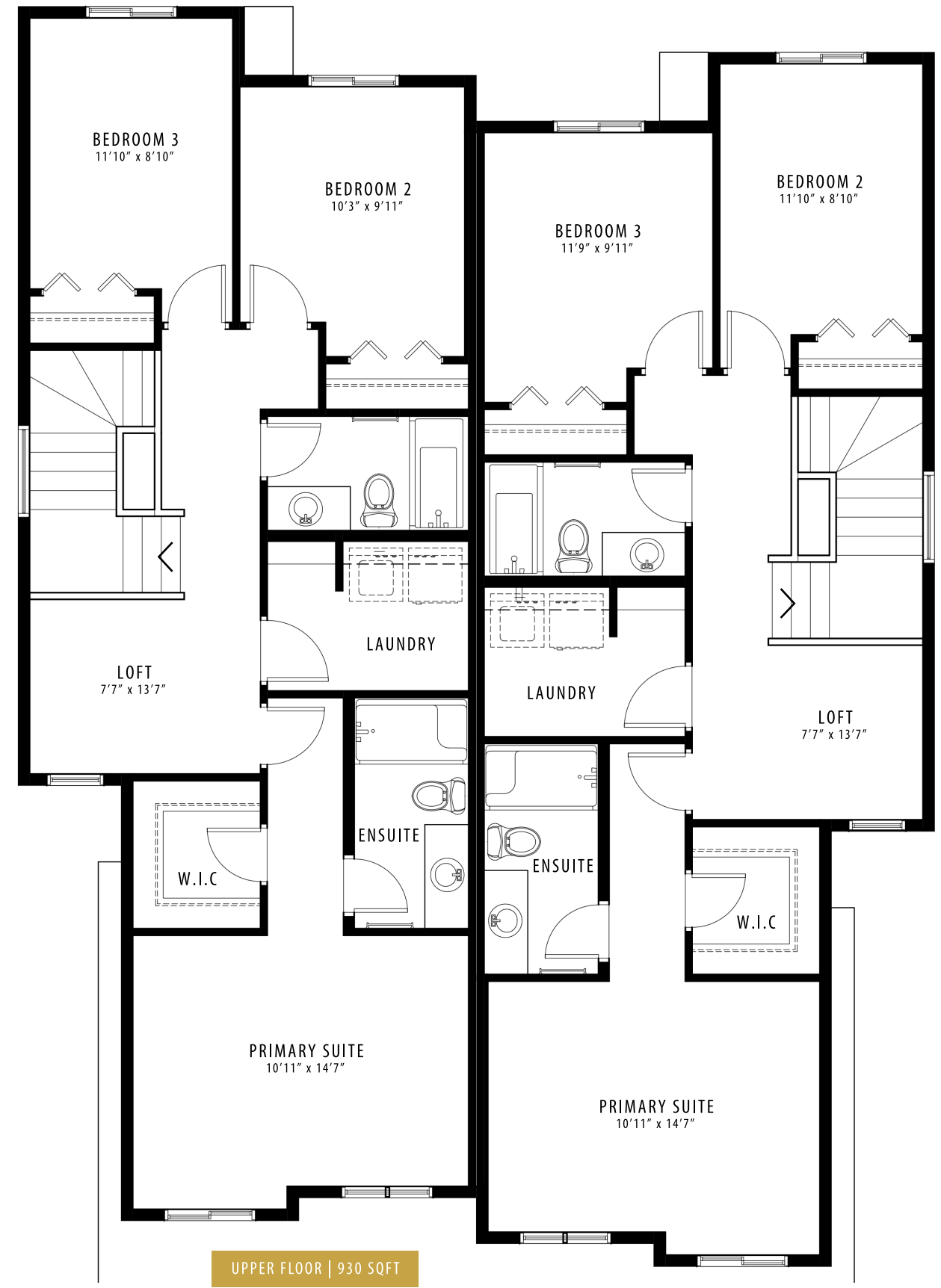
MODERN

1,618 SQFT/UNIT



MAIN FLOOR | 688 SQFT

MAIN FLOOR | 688 SQFT



UPPER FLOOR | 930 SQFT

UPPER FLOOR | 930 SQFT