

The Rockwell 30

AVAILABLE ELEVATIONS



FRONT ELEVATION

MODERN PRAIRIE



FRONT ELEVATION

CRAFTSMAN



FRONT ELEVATION

PRAIRIE

Please confirm with our Sales Team which elevations are available in your desired community. All elevations, floor plans and dimensions are for illustrative purposes only and are intended to convey a concept and visualization of our homes. They are subject to modifications at any time and are not to be used for contractual purposes. Square footage noted reflects Residential Measurement Standard.



The Rockwell 30

PRAIRIE

2595 SQ FT

3 BEDROOMS | 2.5 BATHROOMS | 2 CAR TANDEM GARAGE



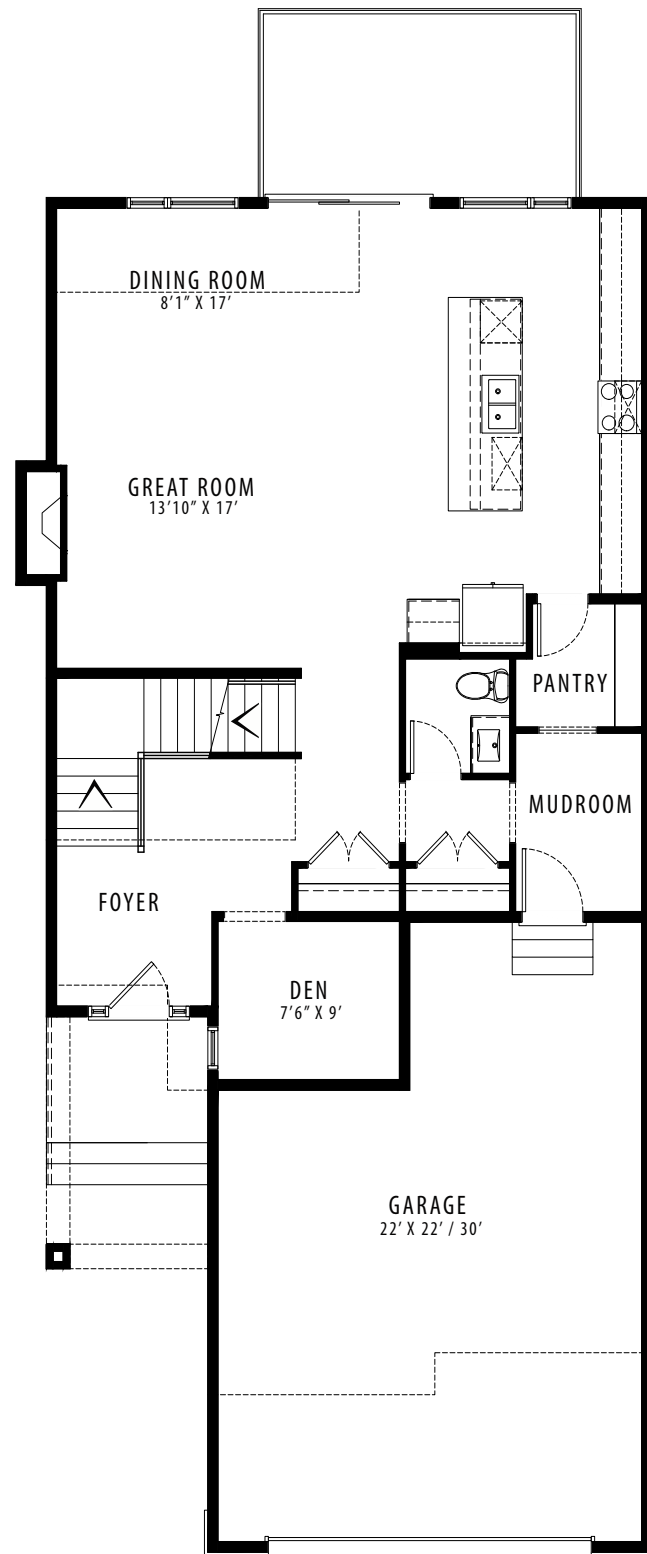
crystalcreekhomes.ca

crystalcreekhomes.ca

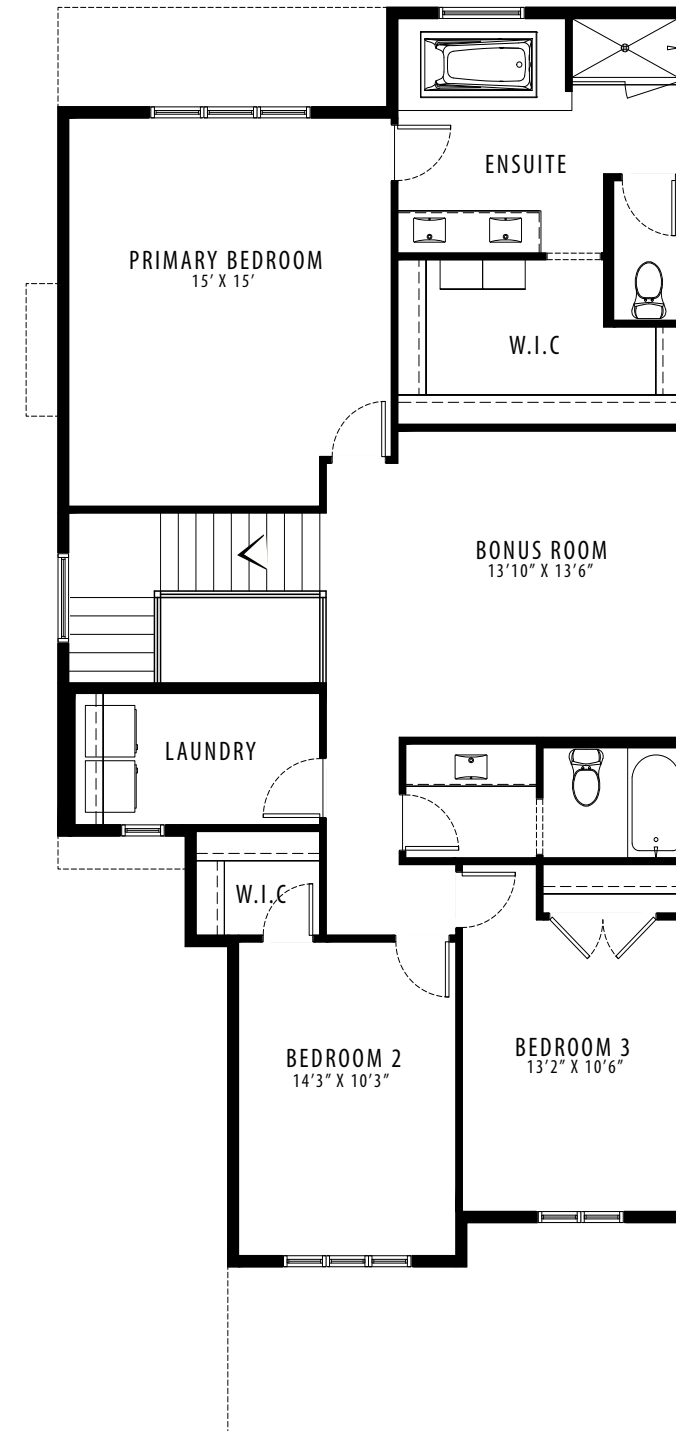
The Rockwell 30

PRAIRIE

2595 SQ FT



MAIN FLOOR | 1151 SQ FT



UPPER FLOOR | 1444 SQ FT