



Quick Possession Home

elan

CRYSTAL CREEK
HOMES

19 YEARS

→ EST. 2004

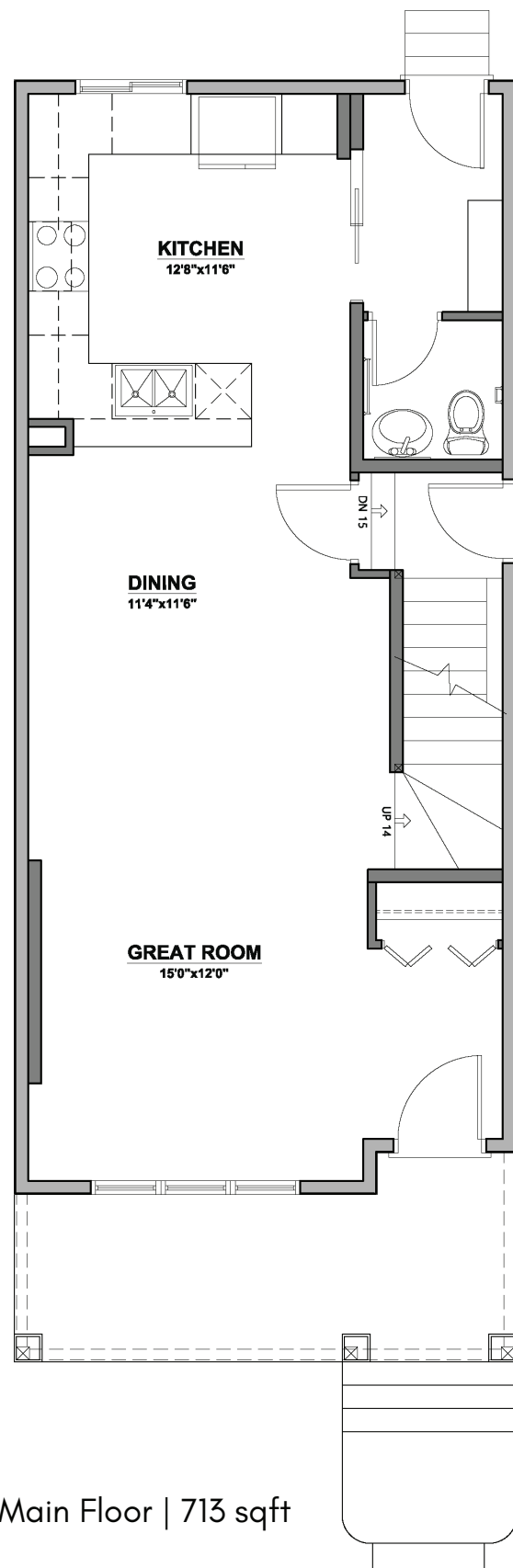
CRYSTAL CREEK
HOMES

The Dahlia
7005 52 Ave
Beaumont

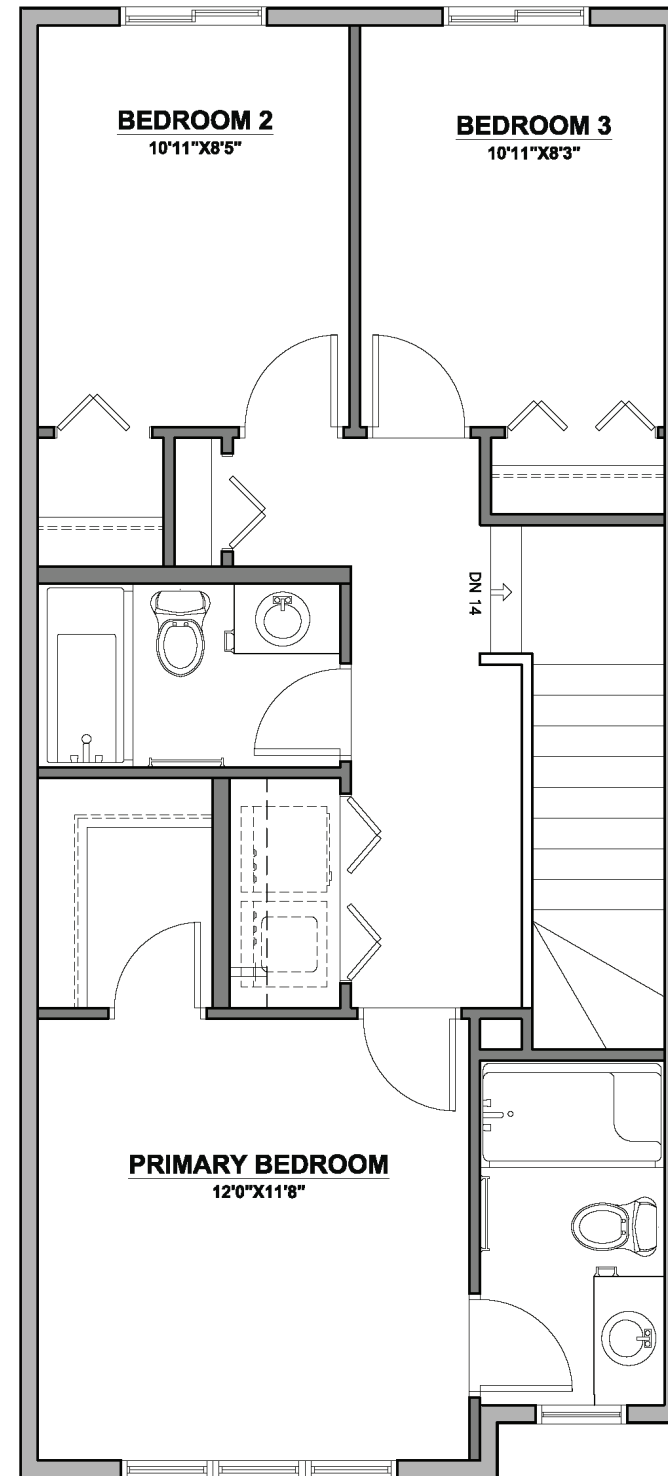
2.5 
3 
1363 sqft

The Dahlia

7005 52 Ave - 1363 sqft



Main Floor | 713 sqft



Upper Level | 650 sqft

Elevation: Craftsman



This Home Features:

- Located across from park
- Exterior Colour - Royal Harvard Slate
- Interior colour - Satin Starless lower cabinets & Satin White upper cabinets
- 20' x 20' Detached garage
- 3 cm Quartz countertops throughout
- Upgraded backsplash
- Waterline to fridge
- 42" kitchen cabinets
- Full depth cabinet above fridge
- 3/4" Gas line for BBQ at rear of home
- Side Entrance - ideal for a basement suite
- 9' Basement ceilings

All elevations, floorplans and dimensions are for illustrative purposes only and are intended to convey a concept and visualization of our homes. They are subject to modifications at any time and are not to be used for contractual purposes.