



19 YEARS
→ EST. 2004

crystalcreekhome.ca

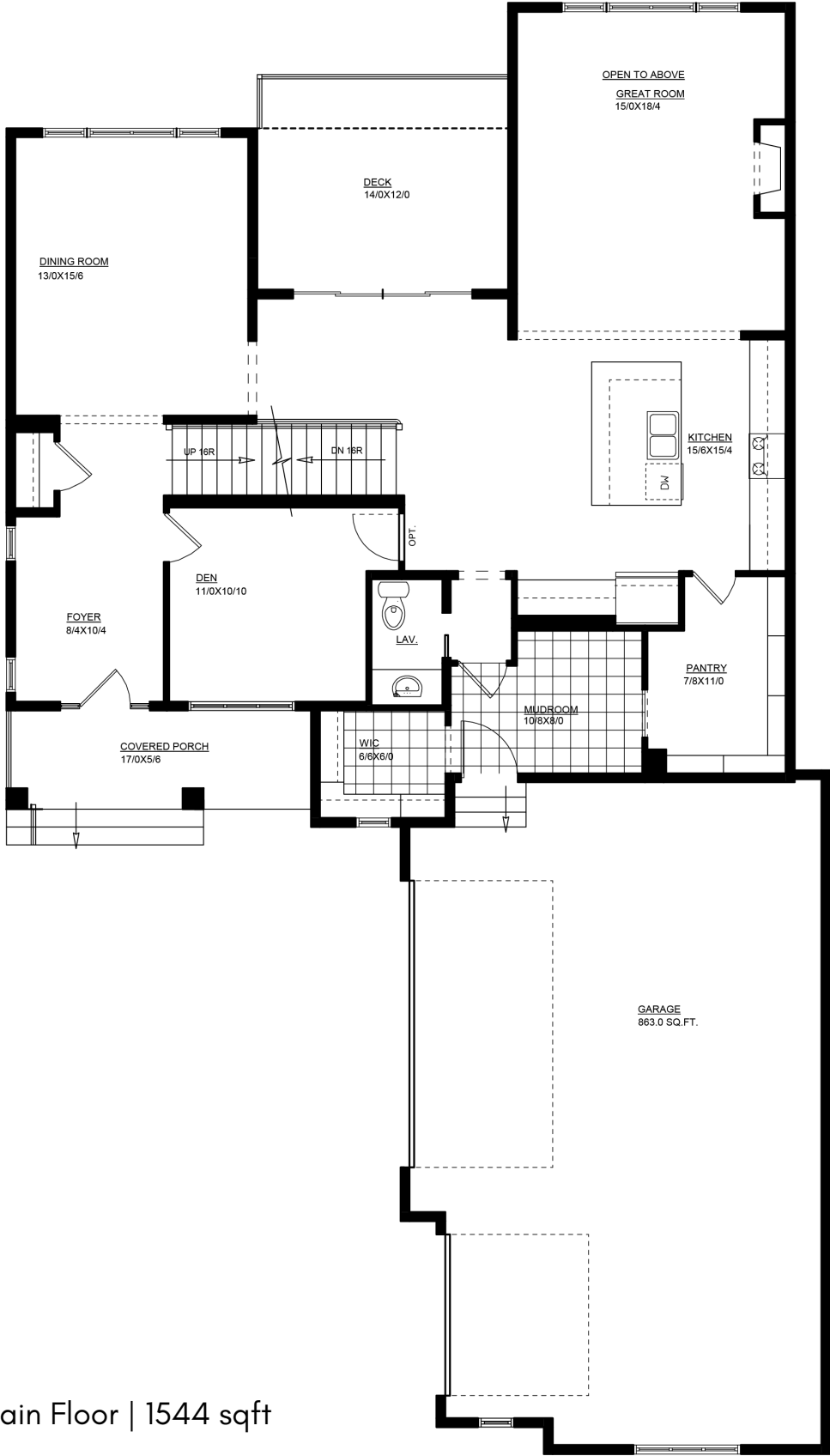


The Somerfield
46

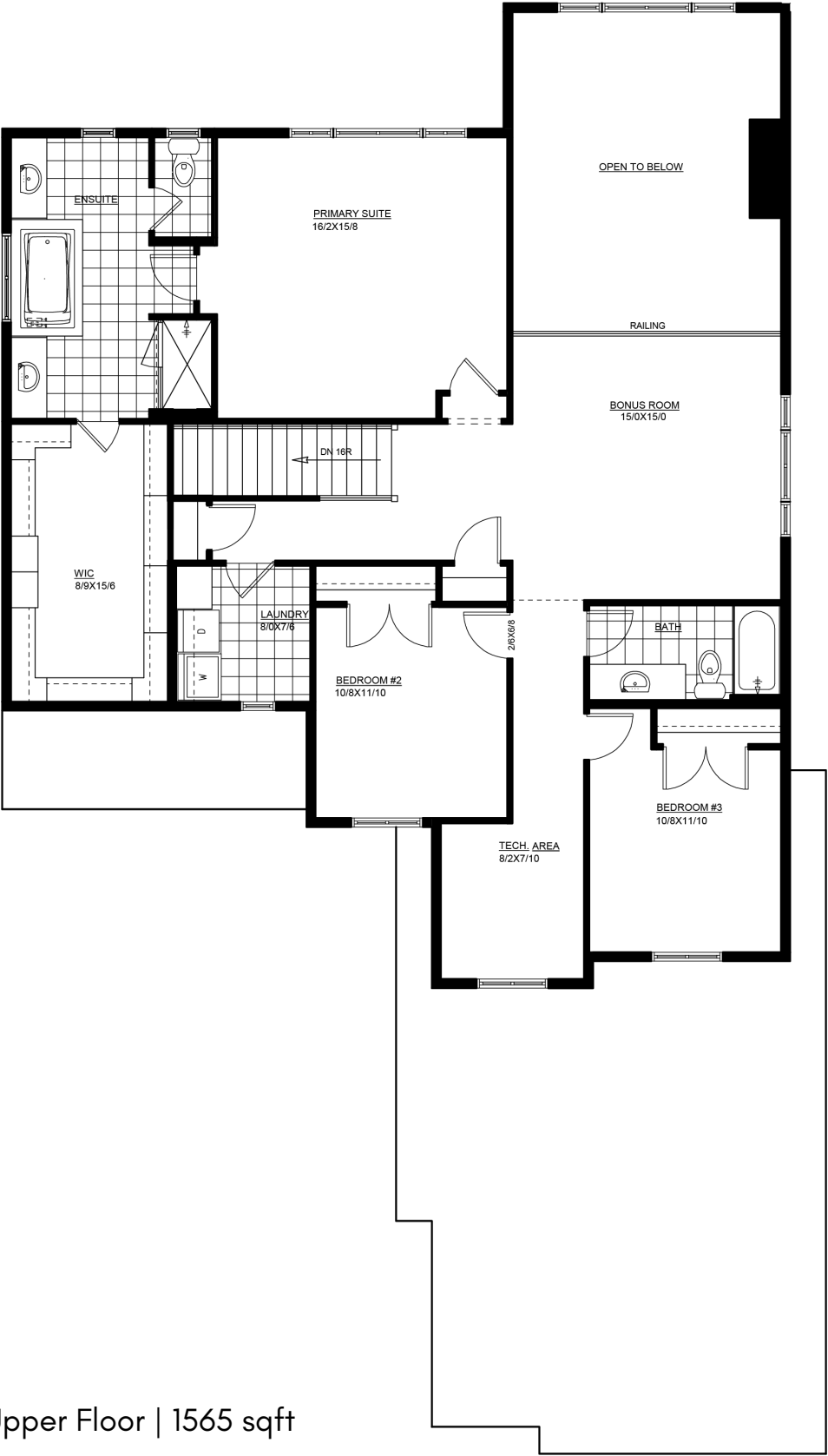
2.5 Bath
3 - 4 Bed
3109 sqft

The Somerfield 46

3109 sqft



Main Floor | 1544 sqft



Upper Floor | 1565 sqft

Available Elevations:

• Please confirm with our Sales Team which elevations are available in your desired community. All elevations, floorplans and dimensions are for illustrative purposes only and are intended to convey a concept and visualization of our homes. They are subject to modifications at any time and are not to be used for contractual purposes. Square footage noted reflects Residential Measurement Standard.



Rustic Contemporary



Modern Farmhouse