

The Somerfield 46



AVAILABLE ELEVATIONS



FRONT ELEVATION **RUSTIC CONTEMPORARY**



FRONT ELEVATION **MODERN FARMHOUSE**

Please confirm with our Sales Team which elevations are available in your desired community. All elevations, floorplans and dimensions are for illustrative purposes only and are intended to convey a concept and visualization of our homes. They are subject to modifications at any time and are not to be used for contractual purposes. Square footage noted reflects Residential Measurement Standard.



The Somerfield 46

RUSTIC CONTEMPORARY **3160 SQ FT**

3 BEDROOMS | 2.5 BATHROOMS | 3 CAR GARAGE



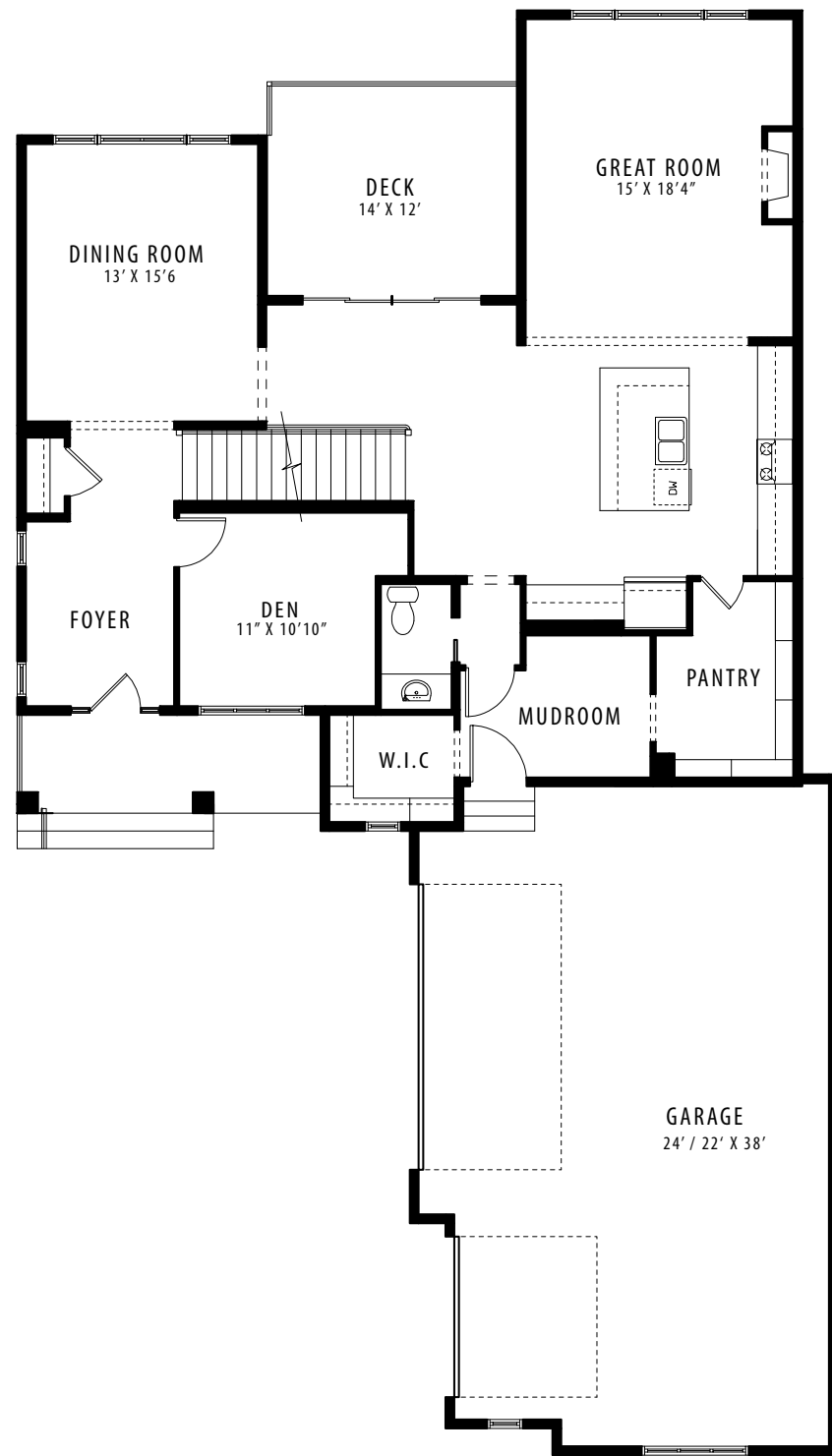
crystalcreekhomes.ca

crystalcreekhomes.ca

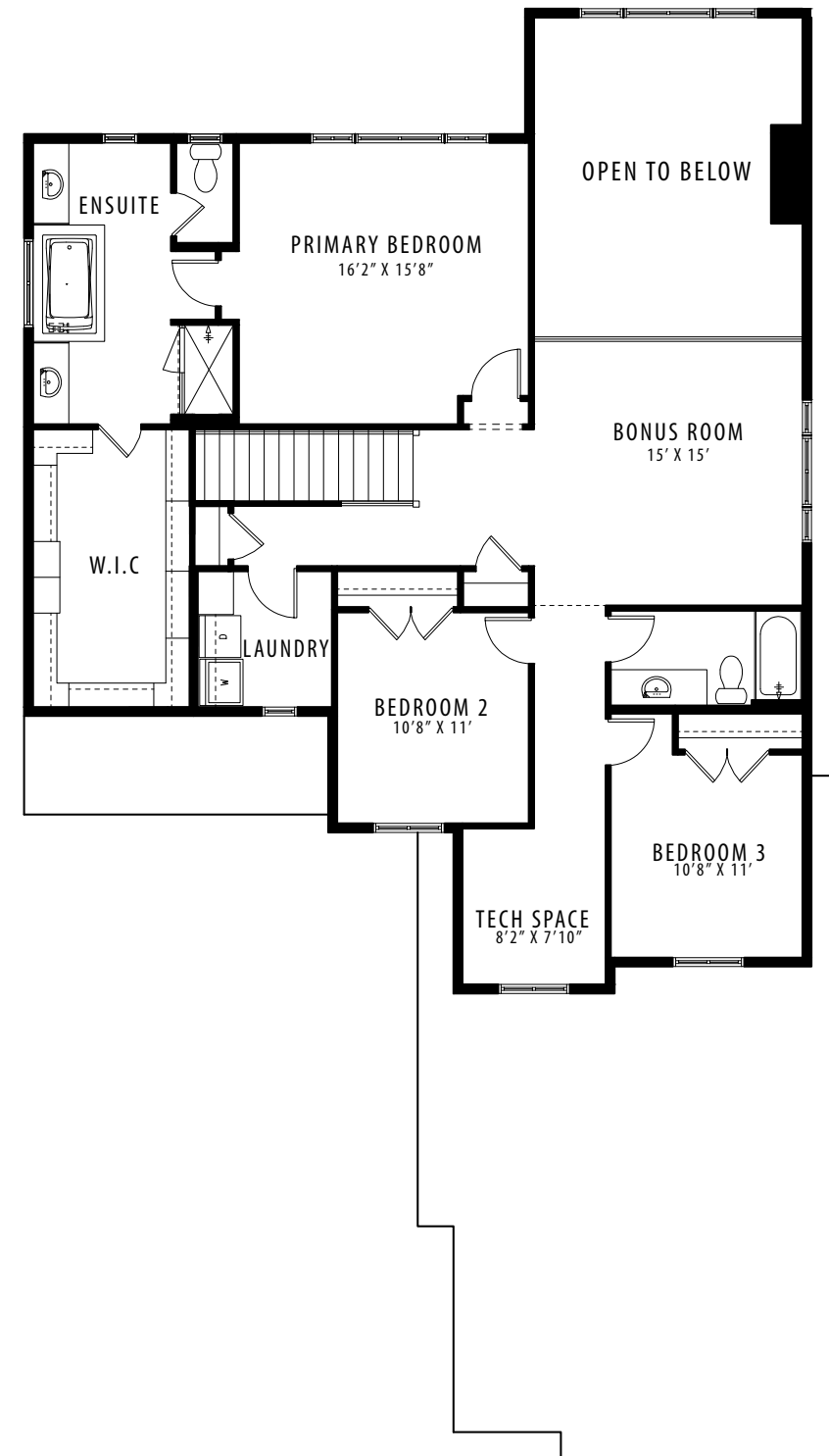
The Somerfield 46

RUSTIC CONTEMPORARY

3160 SQFT



MAIN FLOOR | 1544 SQFT



UPPER FLOOR | 1616 SQFT