



Quick Possession Home

élan

CRYSTAL CREEK
HOMES
19 YEARS
EST. 2004

CRYSTAL CREEK
HOMES

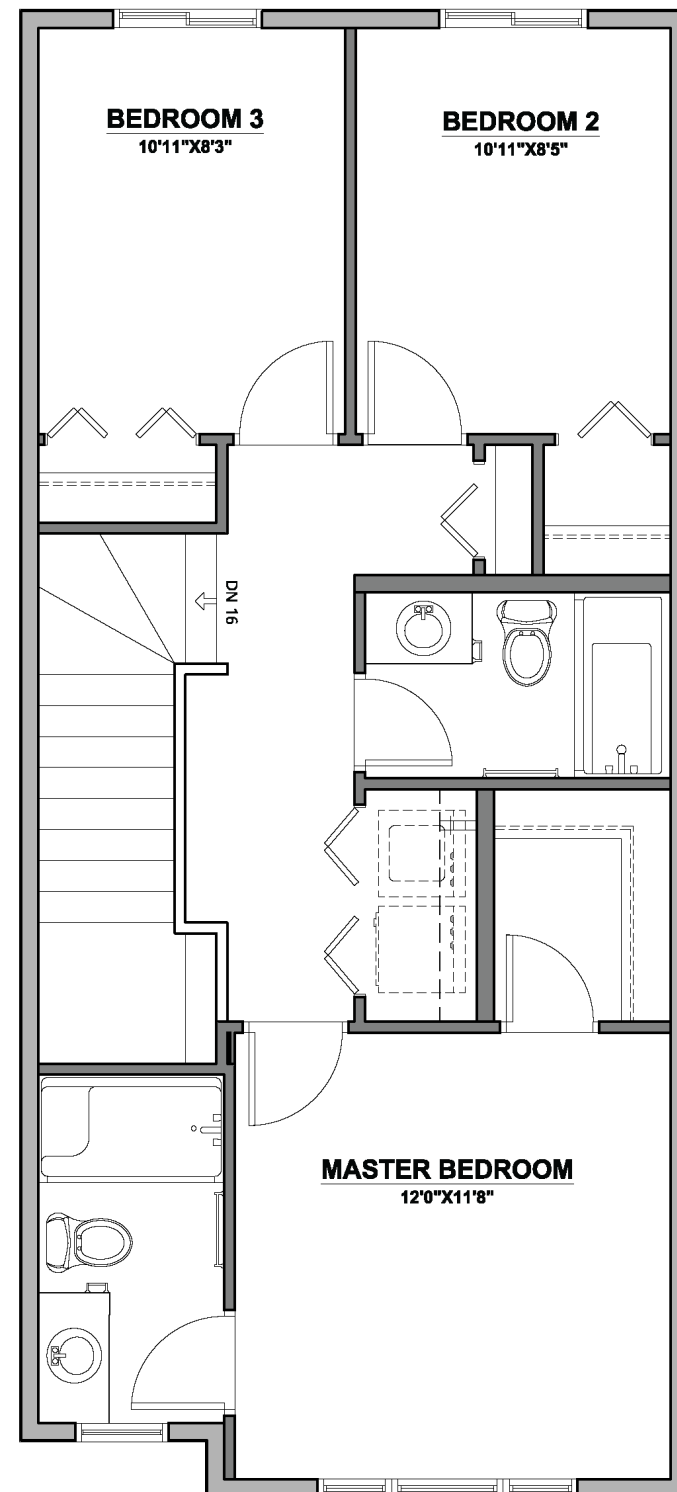
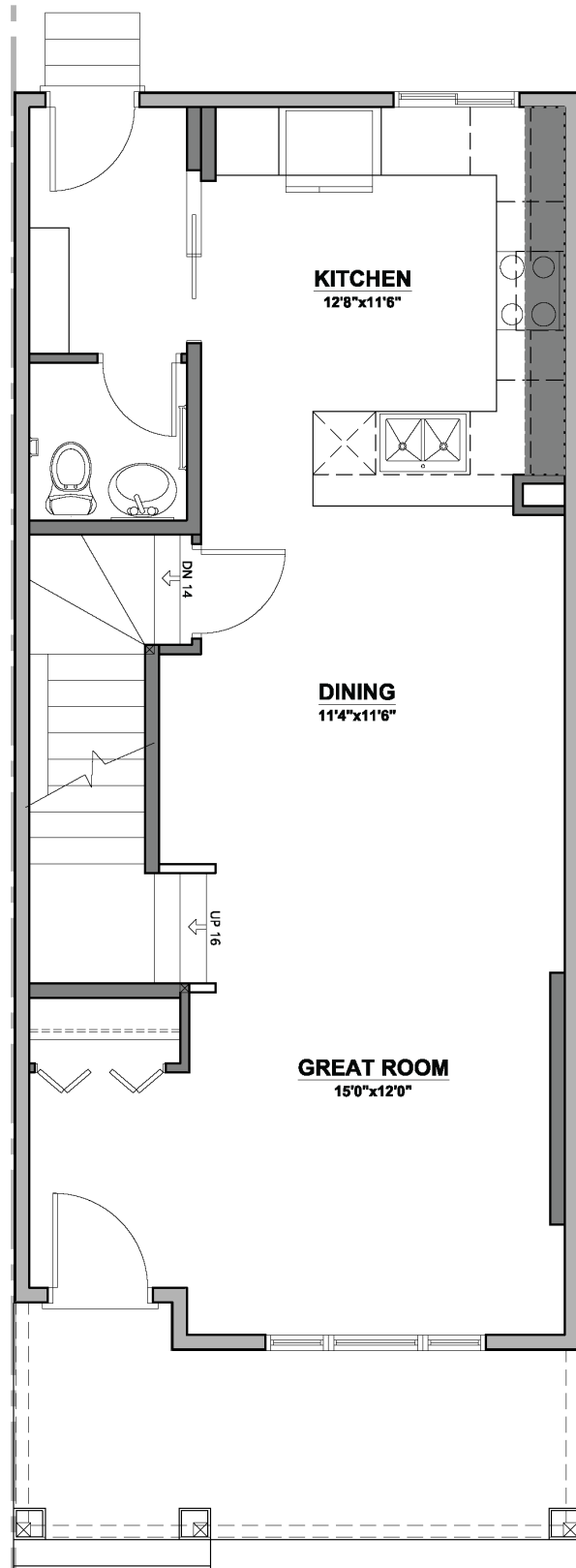
The Dahlia
7135 52 Ave
Beaumont

2.5 
3 
1358 sqft

The Dahlia

7135 52 Ave - 1358 sqft

Main Floor | 713 sqft



Upper Level | 645 sqft

Elevation: Modern Farmhouse



This Home Features:

- Exterior Colour - Redwood and Flagstone
- Interior colour - Satin Sleet
- Waterline to fridge
- 42" cabinets with a bulkhead to the ceiling
- Full depth cabinet above fridge
- 9' main floor ceilings
- Transom windows on main floor
- 3/4" Gas line for BBQ at rear of home
- Parking pad

All elevations, floorplans and dimensions are for illustrative purposes only and are intended to convey a concept and visualization of our homes. They are subject to modifications at any time and are not to be used for contractual purposes.