

22 SOUTH SHORE BAY

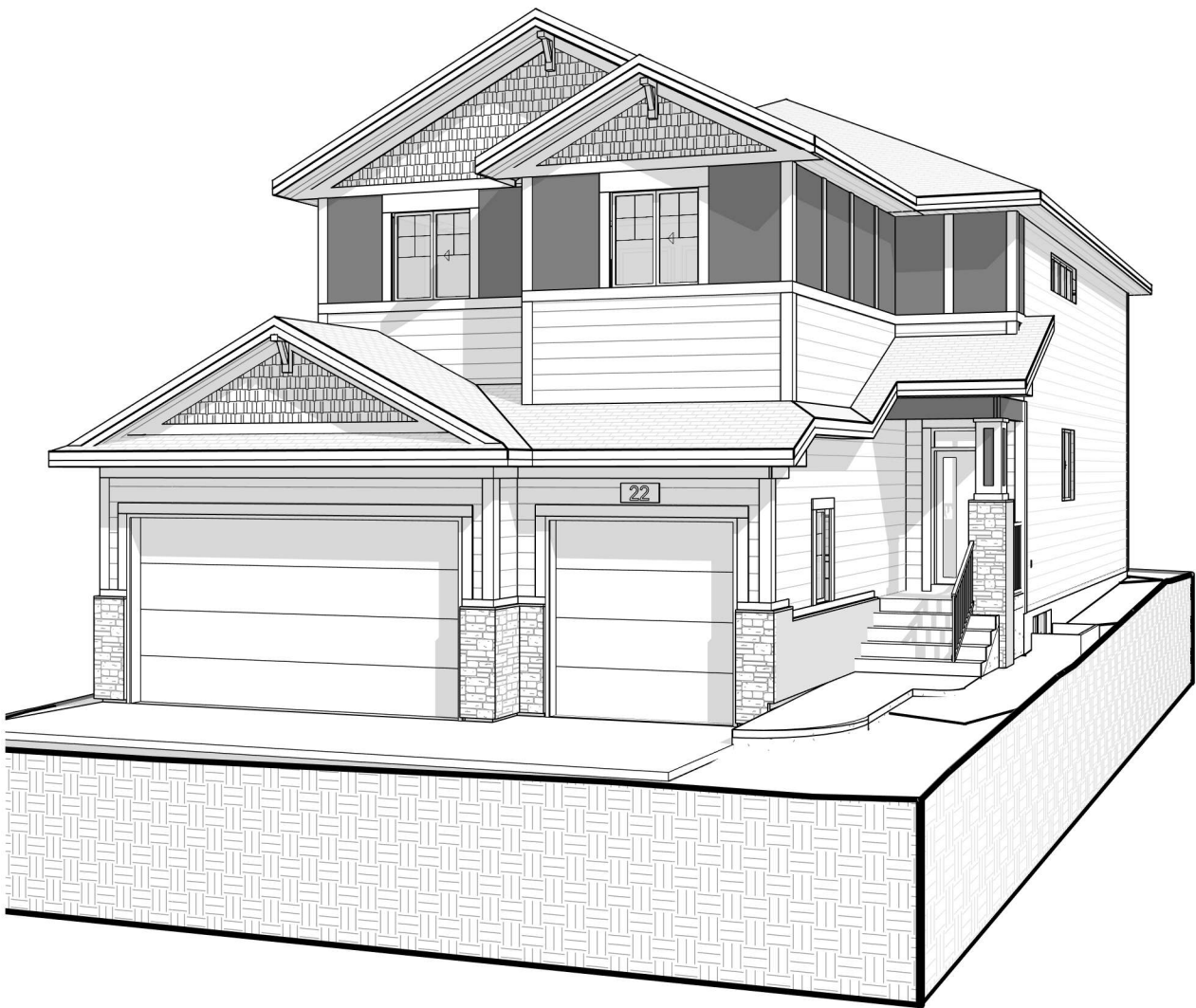
**RMS
MEASUREMENTS**

MAIN FLOOR	1422 ft²
UPPER FLOOR	1389 ft²
UPPER FLOOR STAIR	64 ft²

HOUSE TOTAL	2875 ft²
-------------	----------

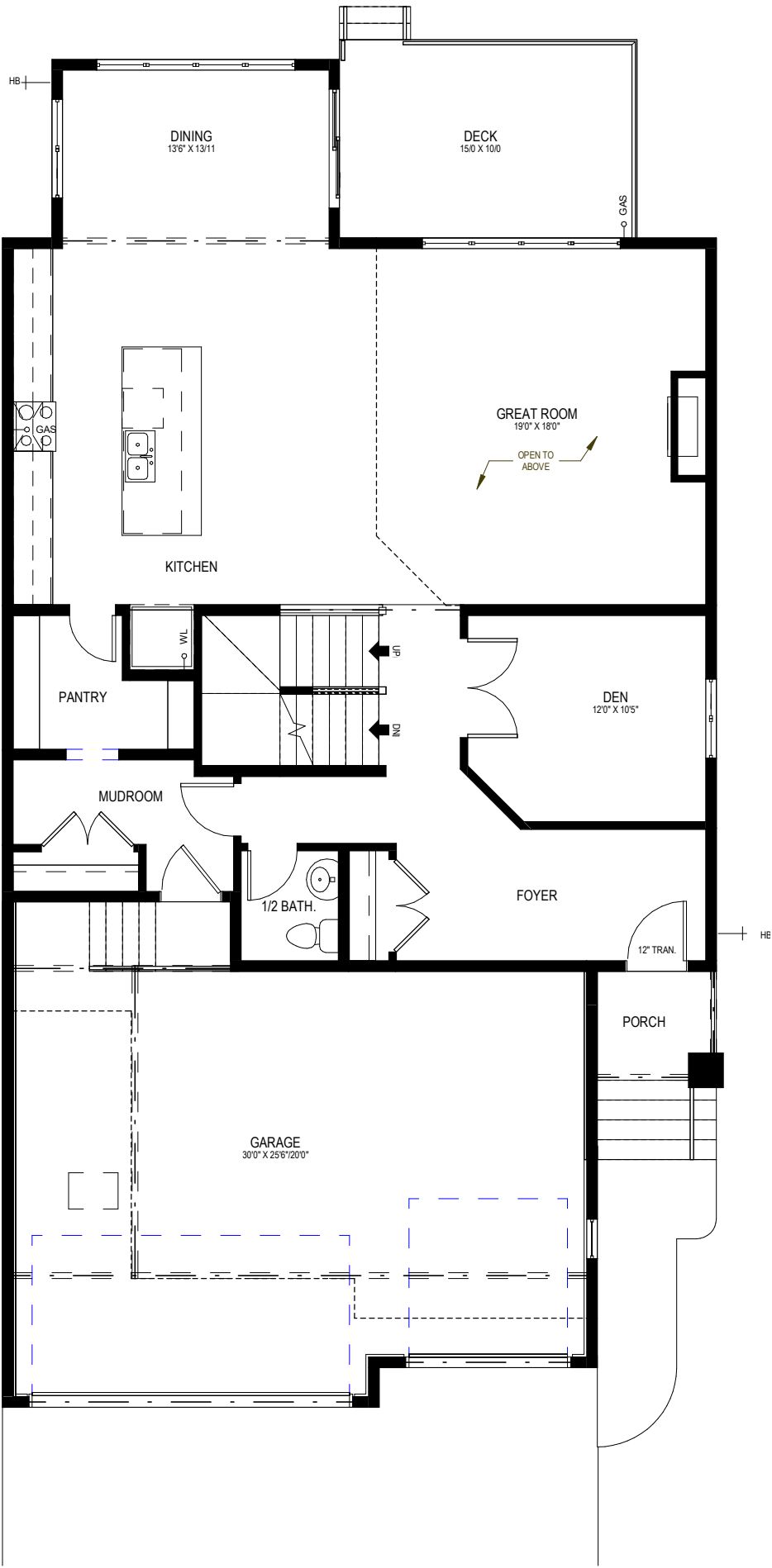
DECK	150 ft²
GAR. ATCH.	678 ft²
PORCH	33 ft²

BSMNT. DVLP.	0 ft²
BSMNT. STAIR	80 ft²



BERKSHIRE 36

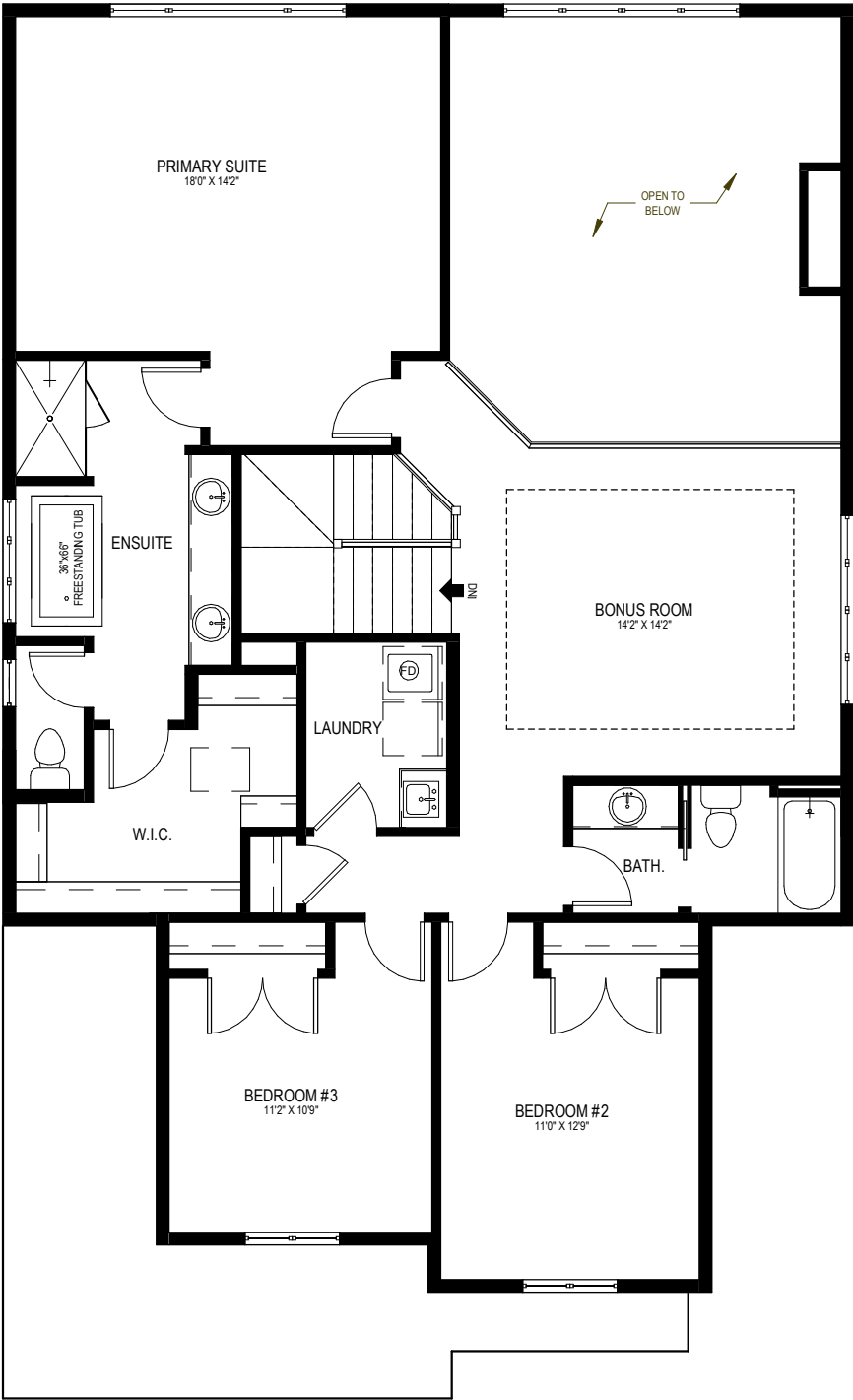
9'1" MAIN FLOOR STANDARD



JOB #:	SSH-0103-022	DRAWN BY:	RM	RELEASE INFO:	RELEASED FOR CONSTRUCTION				
MODEL:	BERKSHIRE 36	2023-11-14 9:26:10 AM							
ELEV. STYLE:	AB CRAFTSMAN	<div><p>CRYSTAL CREEK HOMES</p><p>6010 - 12th STREET S.E. CALGARY, AB T2H 2K2 PHONE (403) 254-6499 FAX (403) 256-1911</p></div>							
SPECIFICATIONS:	PRESTIGE								
MUNICIPAL/LEGAL ADDRESS:	22 SOUTH SHORE BAY CHESTERMERE, AB LOT 39, BLOCK 3, PHASE 1								
		SHEET SIZE		11"x 17"					
		SHEET NO.		B2					
THIS DRAWING, PLAN SET, BROCHURE OR RENDERING IS THE PROPERTY OF CRYSTAL CREEK HOMES INC. 6010-12TH STREET SE, CALGARY AB, T2H 2K2 ALL RIGHTS RESERVED, INCLUDING THE RIGHT TO REPRODUCE, IN WHOLE OR IN PART, IN ANY FORM WITHOUT WRITTEN CONSENT OF CRYSTAL CREEK HOME INC.									

BERKSHIRE 36

UPPER FLOOR STANDARD



JOB #:	SSH-0103-022	DRAWN BY:	RM	RELEASE INFO:	RELEASED FOR CONSTRUCTION
MODEL:	BERKSHIRE 36	2023-11-14 9:26:10 AM			
ELEV. STYLE:	AB CRAFTSMAN	<div><div><div><div><div><div></div></div></div><div><div><div></div></div><div><div></div></div></div><div><div><div></div></div><div><div></div></div></div><div><div><div></div></div><div><div></div></div></div></div><div>CRYSTAL CREEK HOMES</div><div>6010 - 12th STREET S.E. CALGARY, AB T2H 2X2 PHONE (403) 254-6499 FAX (403) 256-1911</div></div></div>	SHEET SIZE	11"x 17"	
SPECIFICATIONS:	PRESTIGE		SHEET NO.	B3	
MUNICIPAL/LEGAL ADDRESS:	22 SOUTH SHORE BAY CHESTERMERE, AB LOT 39, BLOCK 3, PHASE 1				
		THIS DRAWING, PLAN SET, BROCHURE OR RENDERING IS THE PROPERTY OF CRYSTAL CREEK HOMES INC. 6010-12TH STREET SE, CALGARY AB, T2H 2X2 ALL RIGHTS RESERVED, INCLUDING THE RIGHT TO REPRODUCE, IN WHOLE OR IN PART, IN ANY FORM WITHOUT WRITTEN CONSENT OF CRYSTAL CREEK HOME INC.			