

The Alder

287 Belvedere Drive SE

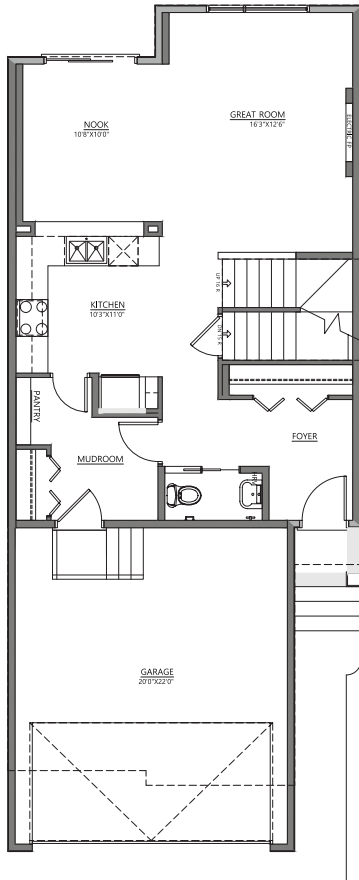
1912 SQFT

4 BEDROOMS | 2.5 BATHROOMS | 2 CAR GARAGE

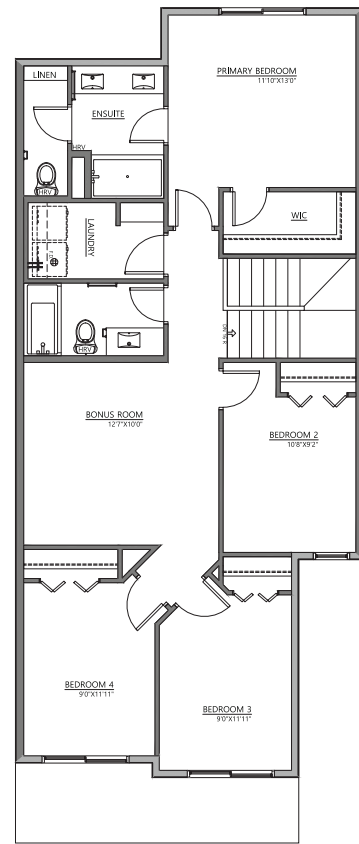


FRONT ELEVATION

MODERN FARMHOUSE



MAIN FLOOR | 817 SQFT



UPPER FLOOR | 1095 QFT

Contact our sales team for more information: belvedere@crystalcreekhomes.ca | 403-984-3501

All elevations, floorplans and dimensions are for illustrative purposes only and are intended to convey a concept and visualization of our homes. They are subject to modifications at any time and are not to be used for contractual purposes.



crystalcreekhomes.ca