



**CRYSTAL CREEK**  
HOMES

**QUICK  
POSSESSION**



## **The Abigail**

323 Normandy Dr SW

**3212** SQFT

4 BEDROOMS | 3.5 BATHROOMS | 2 CAR GARAGE | BASEMENT DEVELOPEMENT (936 SQ FT)



crystalcreekhomes.ca

# The Abigail

323 Normandy Dr SW

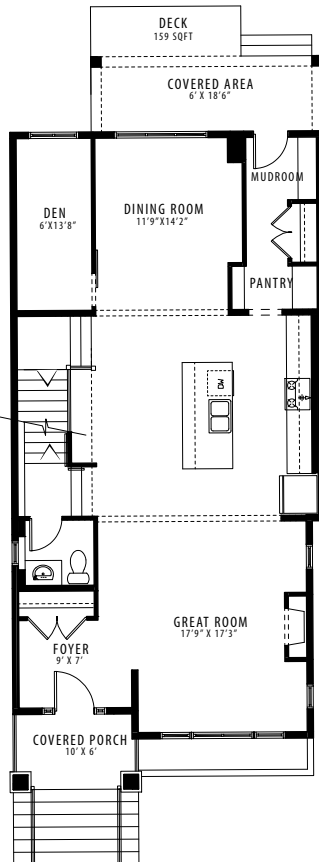
3212 SQFT

4 BEDROOMS | 3.5 BATHROOMS | 2 CAR GARAGE | BASEMENT DEVELOPEMENT

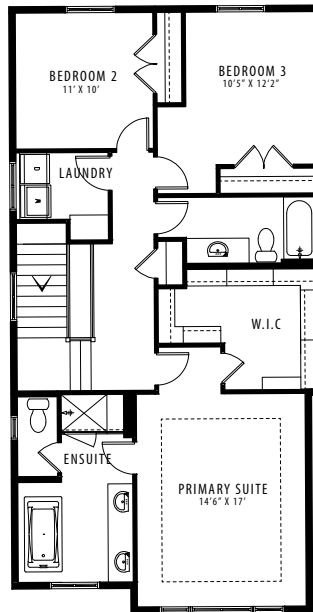


REAR ELEVATION

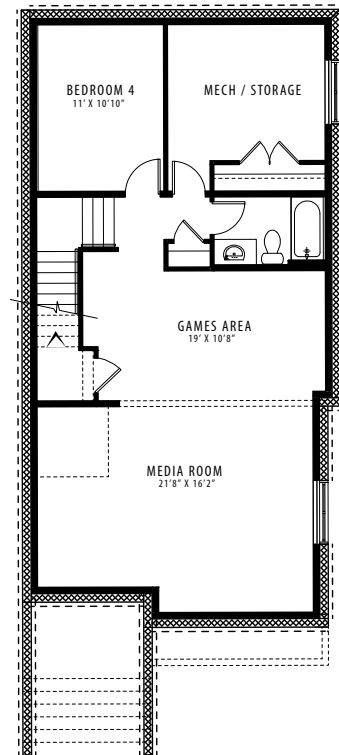
PRAIRIE



MAIN FLOOR | 1176 SQFT



UPPER FLOOR | 1100 SQFT



LOWER LEVEL | 936 SQFT

Contact our sales team for more information: [currie@crystalcreekhomes.ca](mailto:currie@crystalcreekhomes.ca) | 403-452-3571

All elevations, floorplans and dimensions are for illustrative purposes only and are intended to convey a concept and visualization of our homes. They are subject to modifications at any time and are not to be used for contractual purposes.



[crystalcreekhomes.ca](http://crystalcreekhomes.ca)