



**CRYSTAL CREEK**  
H O M E S

**LEASEBACK**



## **The Kennedy**

219 Calais Drive SW

**3991** SQFT

5 BEDROOMS | 4.5 BATHROOMS | 2 CAR GARAGE | BASEMENT DEVELOPEMENT (850 SQ FT)



crystalcreekhomes.ca

# The Kennedy

219 Calais Dr SW

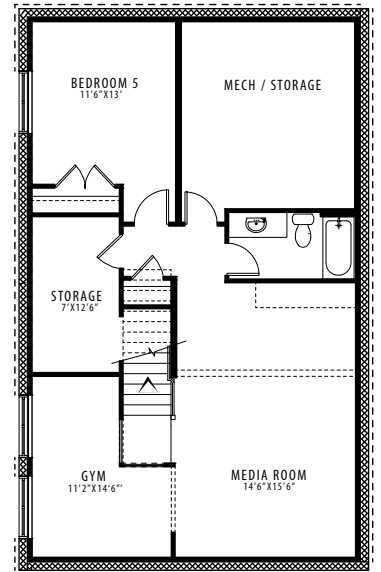
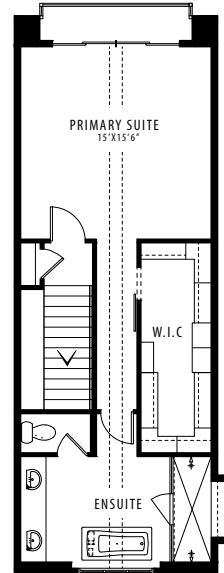
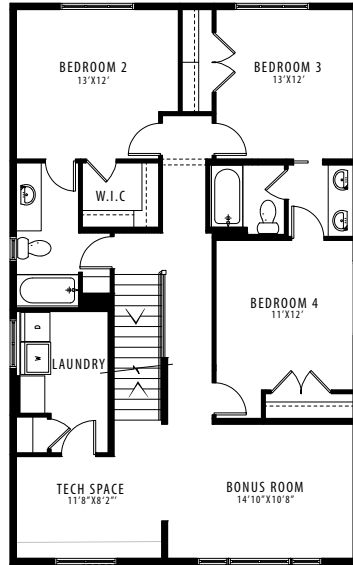
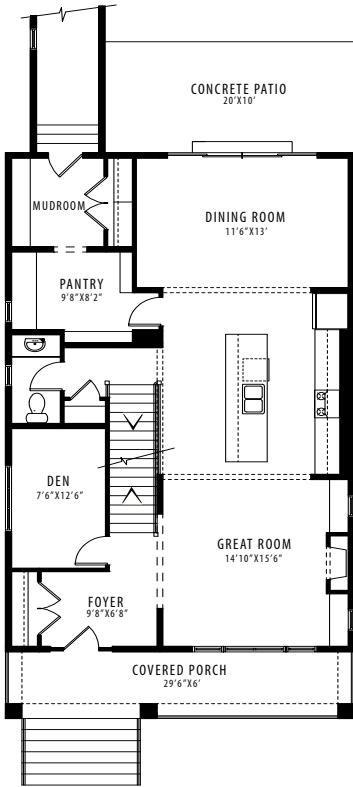
**3991** SQFT

5 BEDROOMS | 4.5 BATHROOMS | 2 CAR GARAGE | BASEMENT DEVELOPEMENT



REAR ELEVATION

**MODERN FARMHOUSE**



MAIN FLOOR | 1260 SQFT

UPPER FLOOR | 1260 SQFT

THIRD FLOOR | 621 SQFT

LOWER LEVEL | 850 SQFT

Contact our sales team for more information: [currie@crystalcreekhomes.ca](mailto:currie@crystalcreekhomes.ca) | 403-452-3571

All elevations, floorplans and dimensions are for illustrative purposes only and are intended to convey a concept and visualization of our homes. They are subject to modifications at any time and are not to be used for contractual purposes.



[crystalcreekhomes.ca](http://crystalcreekhomes.ca)