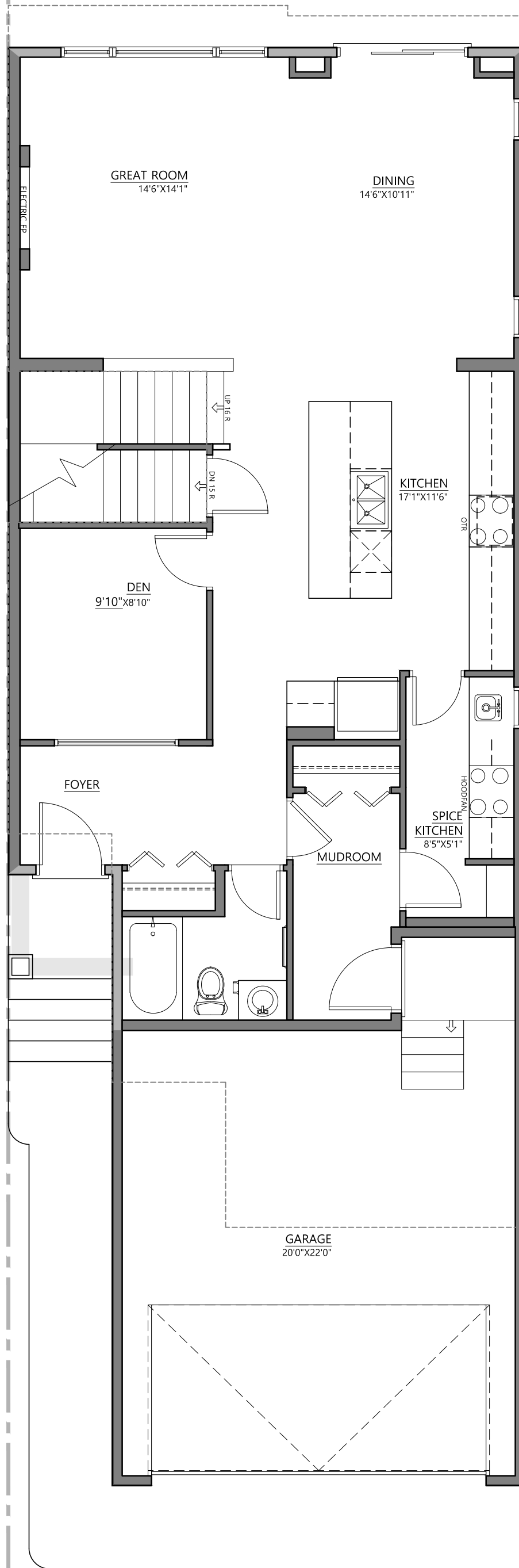


FRONT ELEVATION
CONTEMPORARY

9'1" MAIN FLOOR PLAN

25' WIDE FULL BATH - SPICE KITCHEN - CONTEMPORARY

1123 SQ.FT.



8'1" UPPER FLOOR PLAN - FOUR BEDROOM - CONTEMPORARY
1266 SQ.FT.

