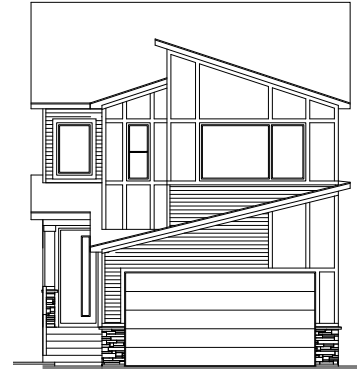


# The Newport

42 Belvedere Green SE

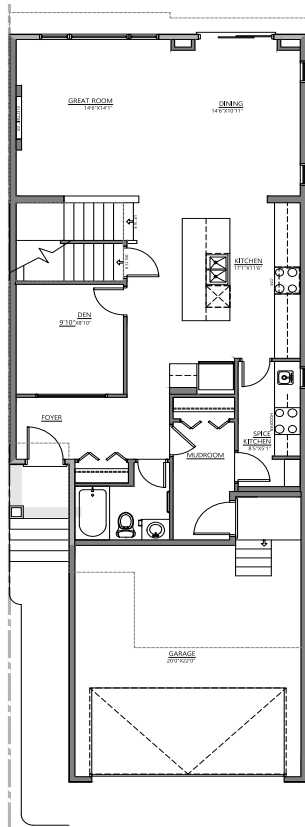
2389 SQFT

4 BEDROOMS | 2.5 BATHROOMS | 2 CAR GARAGE

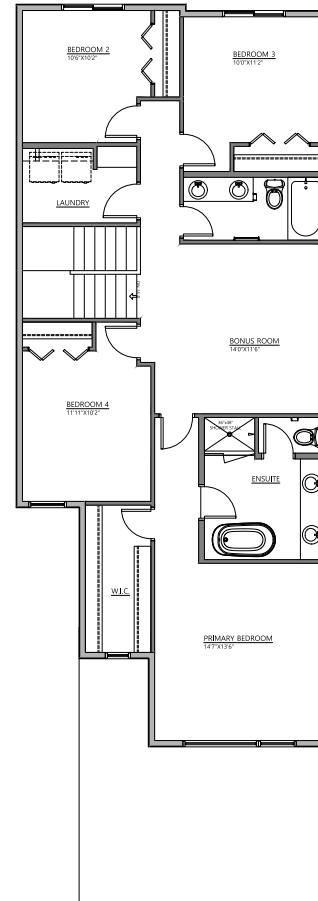


FRONT ELEVATION

CONTEMPORARY



MAIN FLOOR | 1123 SQFT



UPPER FLOOR | 1266 SQFT

Contact our sales team for more information: [belvedere@crystalcreekhomes.ca](mailto:belvedere@crystalcreekhomes.ca) | 403-984-3501

All elevations, floorplans and dimensions are for illustrative purposes only and are intended to convey a concept and visualization of our homes. They are subject to modifications at any time and are not to be used for contractual purposes.



[crystalcreekhomes.ca](http://crystalcreekhomes.ca)