



Quick Possession Home

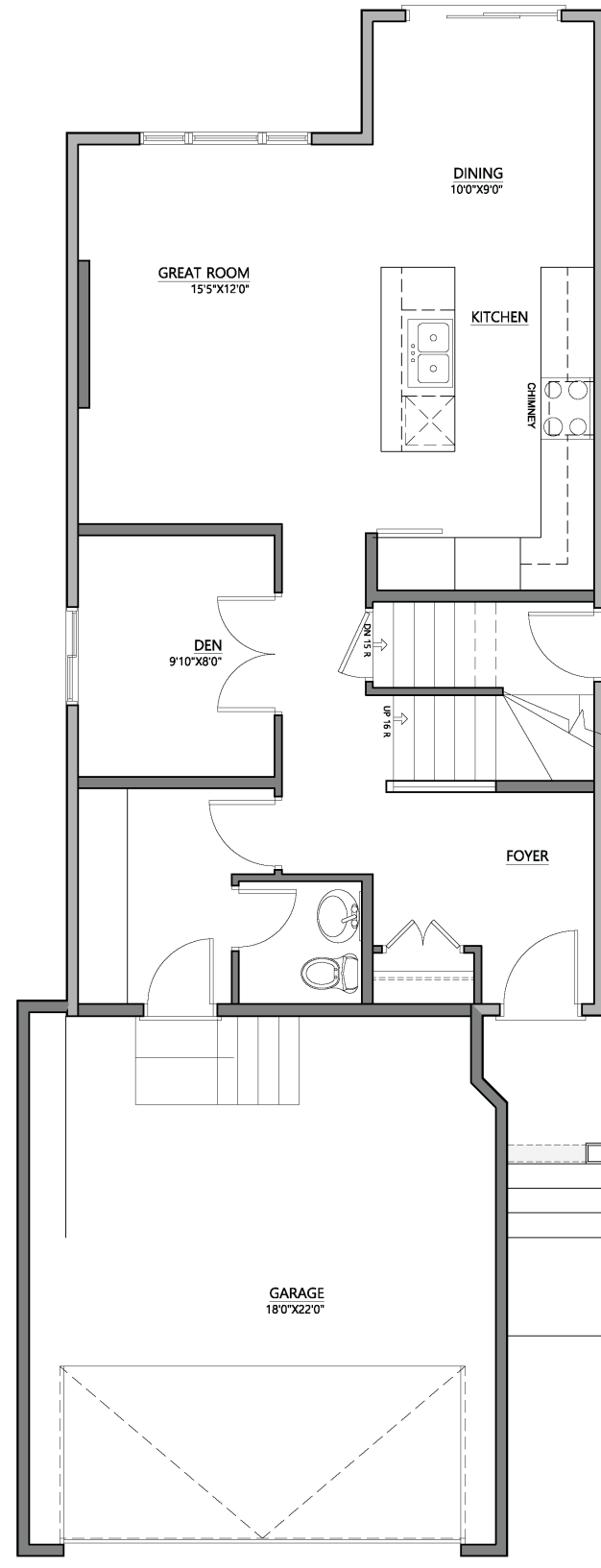


CRYSTAL CREEK
HOMES
19 YEARS
EST. 2004

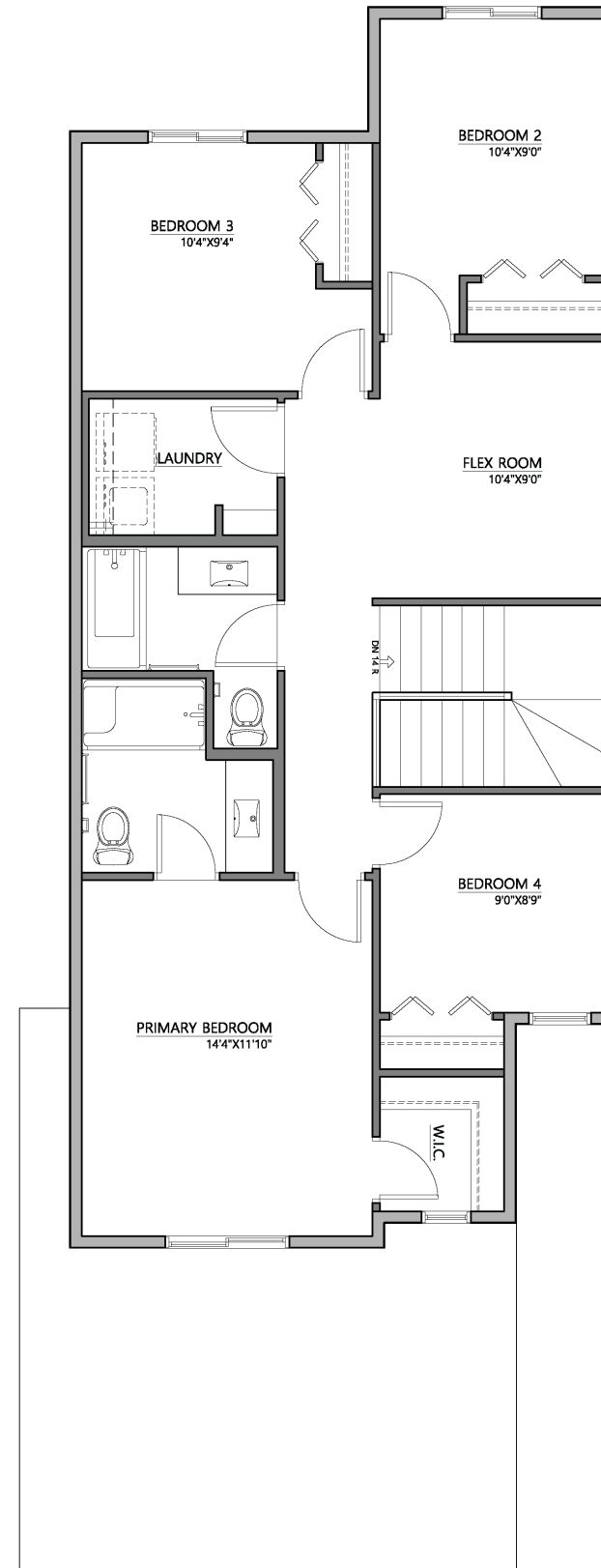
CRYSTAL CREEK
HOMES

The Pine
45 Penn Place
Spruce Grove

3
4
1772 sqft



Main Floor | 842 sqft



Upper Level | 930 sqft

Elevation: Craftsman



This Home Features:

- Large double front attached Garage
- Separate side entrance for future development
- Cubbies with bench and hooks in the mud room
- Main floor den
- Upgraded kitchen includes: quartz countertops, cabinets to the ceiling, mosaic tile backsplash, under-cabinet lighting and hood fan
- Upper floor bonus room

All elevations, floorplans and dimensions are for illustrative purposes only and are intended to convey a concept and visualization of our homes. They are subject to modifications at any time and are not to be used for contractual purposes.