

# Quick Possession Home

*élan*

CRYSTAL CREEK  
HOMES  
19 YEARS  
EST. 2004

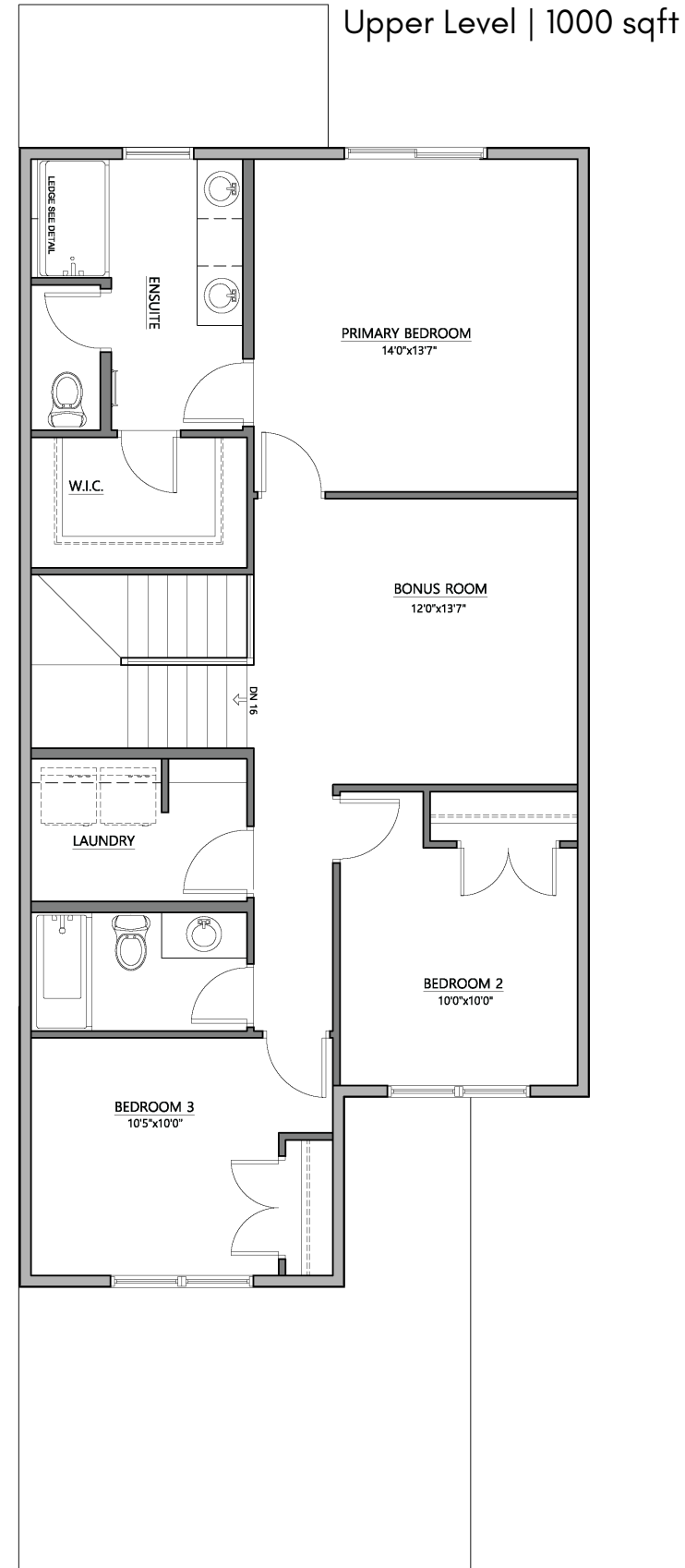
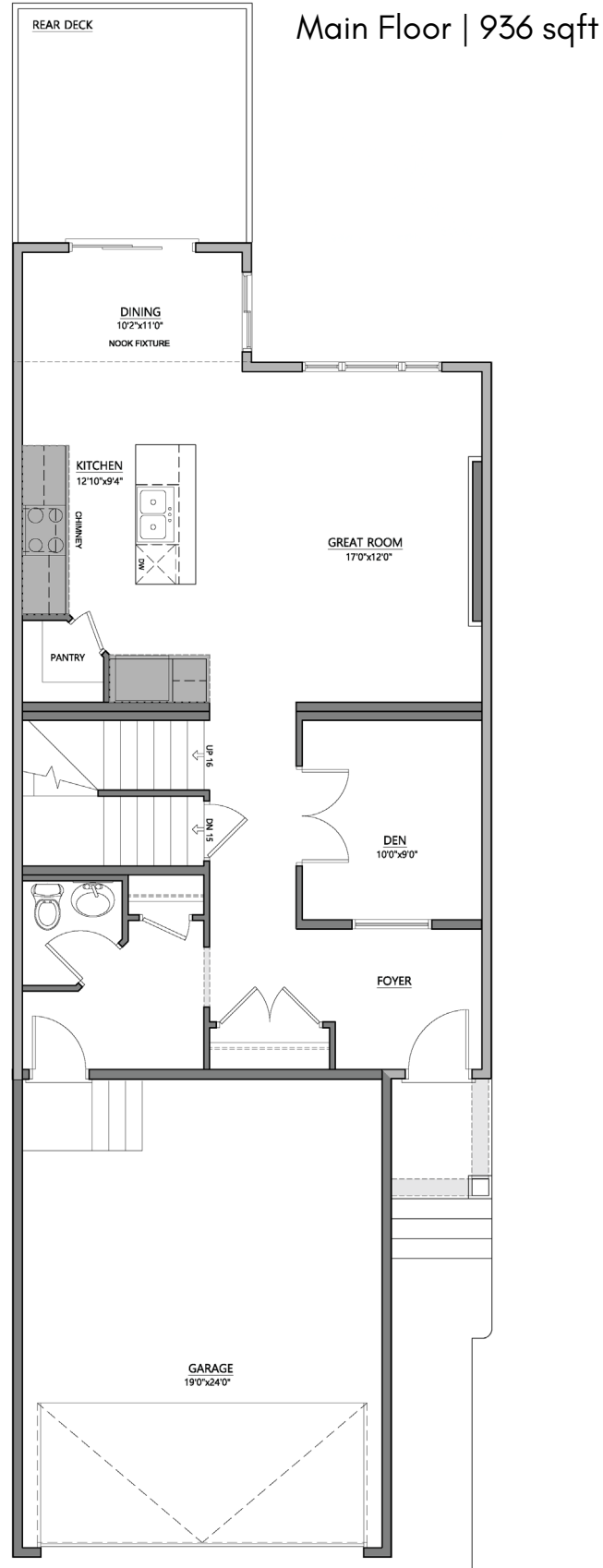
CRYSTAL CREEK  
HOMES

The Maple  
7142 52 Ave  
Beaumont

2.5   
3   
1936 sqft

# The Maple

7142 52 Ave - 1936 sqft



**Elevation:** Craftsman



## This Home Features:

- 9' walkout basement backing onto walking trails
- Double attached garage
- Upgraded kitchen includes: two-toned cabinets, quartz countertops, cabinets to the ceiling, mosaic tile backsplash, under cabinet lighting, and hood fan
- Main floor den
- Spindled railing in the stairwell
- Upgraded tiled shower in the ensuite

All elevations, floorplans and dimensions are for illustrative purposes only and are intended to convey a concept and visualization of our homes. They are subject to modifications at any time and are not to be used for contractual purposes.