



CRYSTAL CREEK
H O M E S

**QUICK
POSSESSION**



The Rockwell

149 Creekstone Hill SW

2592 SQFT

3 BEDROOMS | 2.5 BATHROOMS | 3 CAR TANDEM GARAGE

crystalcreekhomes.ca

The Rockwell

149 Creekstone Hill SW

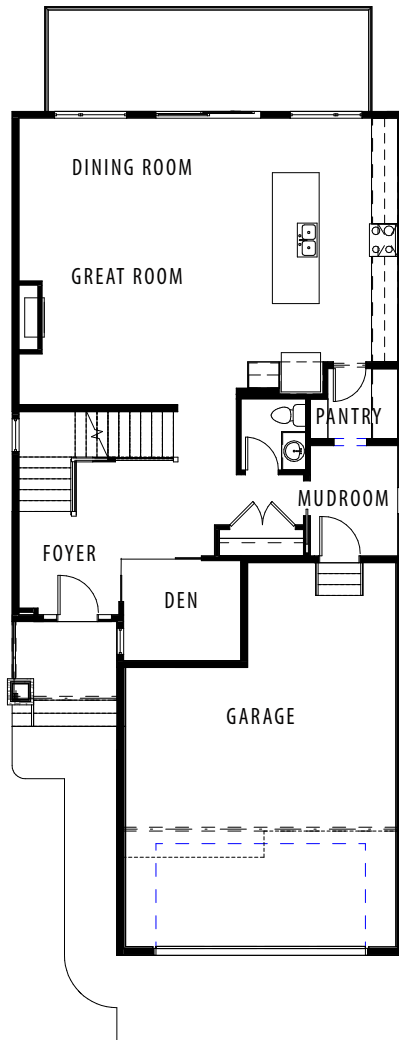
2592 SQFT

3 BEDROOMS | 2.5 BATHROOMS | 3 CAR TANDEM GARAGE

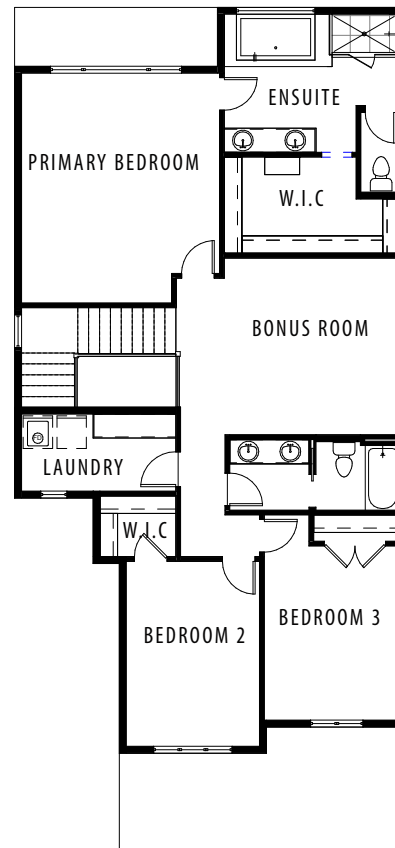


REAR ELEVATION

MODERN FARMHOUSE



MAIN FLOOR | 1151 SQFT



UPPER LEVEL | 1441 SQFT

Contact our sales team for more information: HUDSON@CRYSTALCREEKHOMES.CA | 403-930-6399

All elevations, floorplans and dimensions are for illustrative purposes only and are intended to convey a concept and visualization of our homes. They are subject to modifications at any time and are not to be used for contractual purposes.



crystalcreekhomes.ca