

The Somerton

18 Legacy Woods Crescent SE

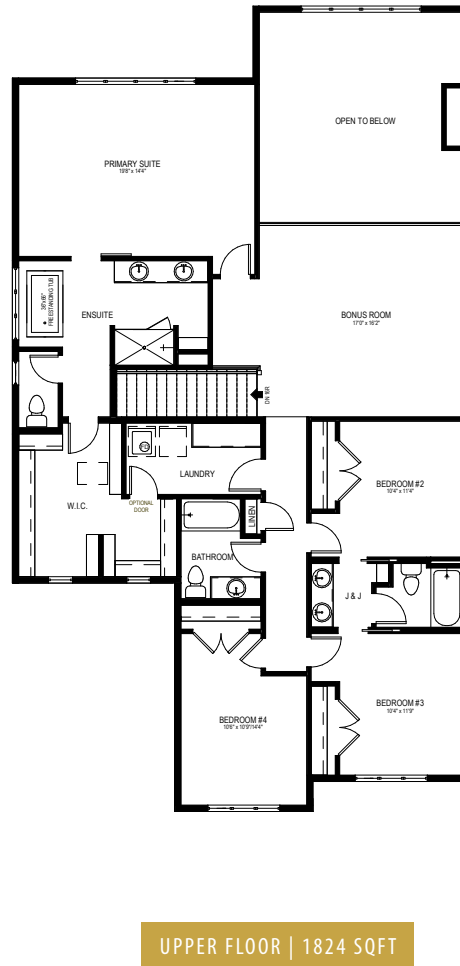
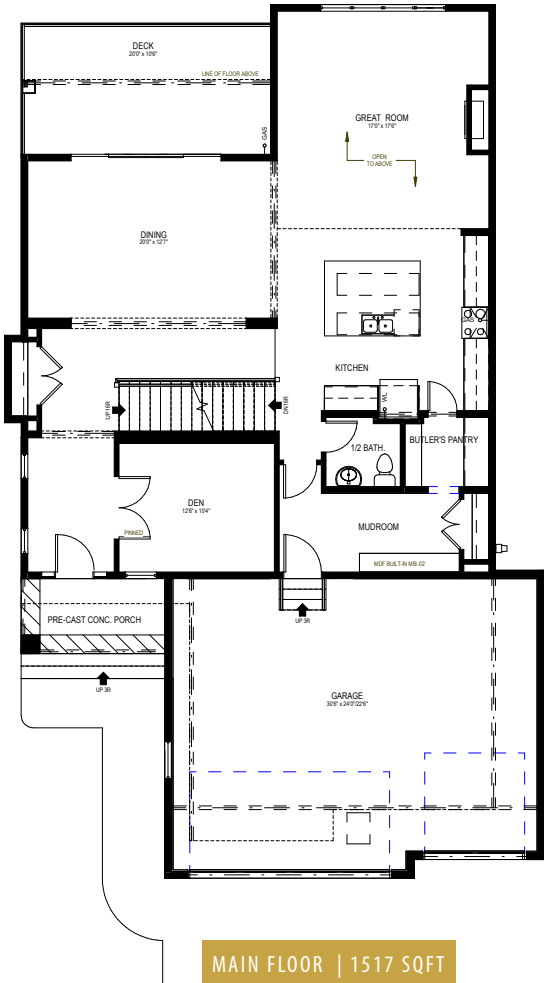
3341 SQFT

4 BEDROOMS | 3.5 BATHROOMS | 3 CAR GARAGE



FRONT ELEVATION

CRAFTSMAN



Contact our sales team for more information: legacy@crystalcreekhomes.ca | 403-452-5697

All elevations, floorplans and dimensions are for illustrative purposes only and are intended to convey a concept and visualization of our homes. They are subject to modifications at any time and are not to be used for contractual purposes.



crystalcreekhomes.ca