



CRYSTAL CREEK
H O M E S

**QUICK
POSSESSION**



The Everett

209 Creekstone Hill SW

2487 SQFT

3 BEDROOMS | 2.5 BATHROOMS | 2 CAR GARAGE

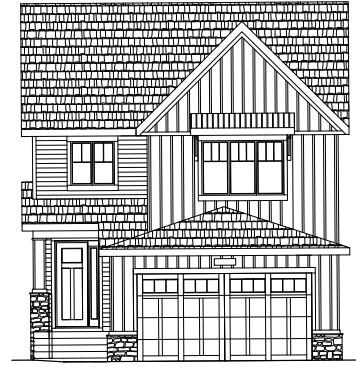
crystalcreekhomes.ca

The Everett

209 Creekstone Hill SW

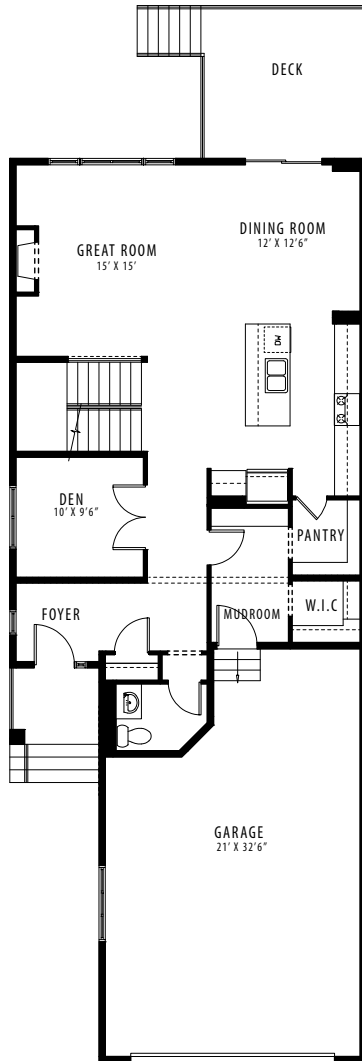
2487 SQFT

3 BEDROOMS | 2.5 BATHROOMS | 2 CAR GARAGE

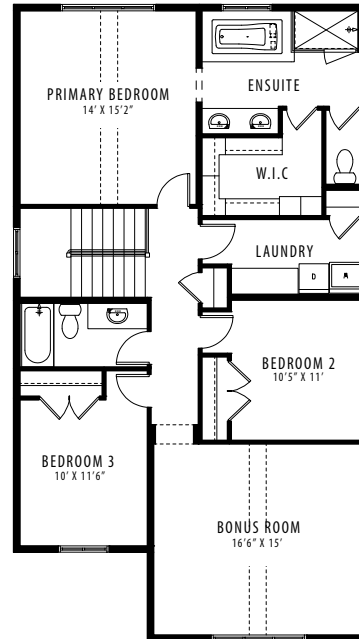


FRONT ELEVATION

MODERN FARMHOUSE



UPPER FLOOR | 1162 SQFT



UPPER FLOOR | 1325 SQFT

Contact our sales team for more information: HUDSON@CRYSTALCREEKHOMES.CA | 403-930-6399

All elevations, floorplans and dimensions are for illustrative purposes only and are intended to convey a concept and visualization of our homes. They are subject to modifications at any time and are not to be used for contractual purposes.



crystalcreekhomes.ca