



**LEASEBACK**



# The Dorchester 44

233 Rowmont Drive NW

**3994 SQFT**

---

4 BEDROOMS | 5 BATHROOMS | 3 CAR GARAGE | BASEMENT DEVELOPEMENT (1370 SQ FT)

---

ROCKLAND  PARK

[crystalcreekhomes.ca](http://crystalcreekhomes.ca)

# The Dorchester 44

233 Rowmont Drive NW

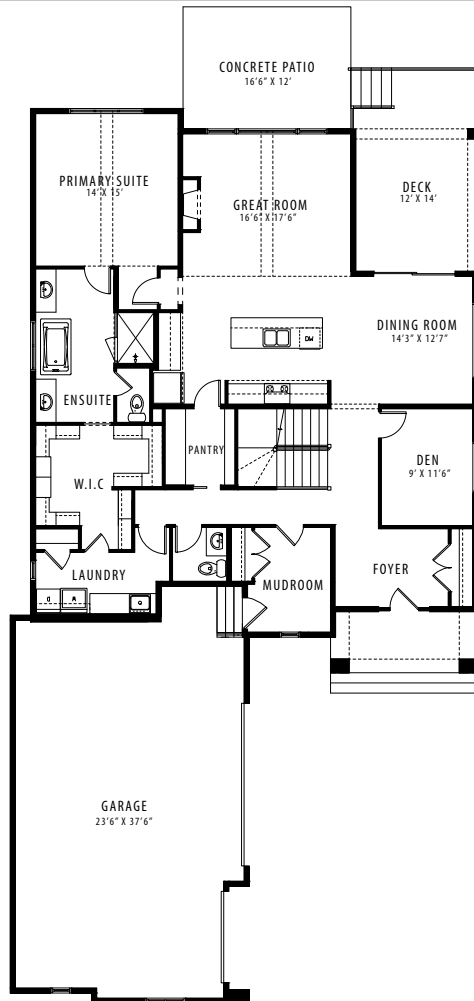
3994 SQFT

4 BEDROOMS | 5 BATHROOMS | 3 CAR GARAGE

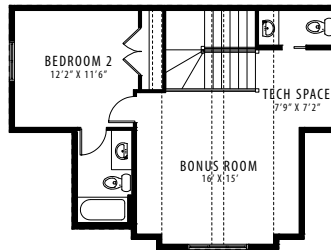


REAR ELEVATION

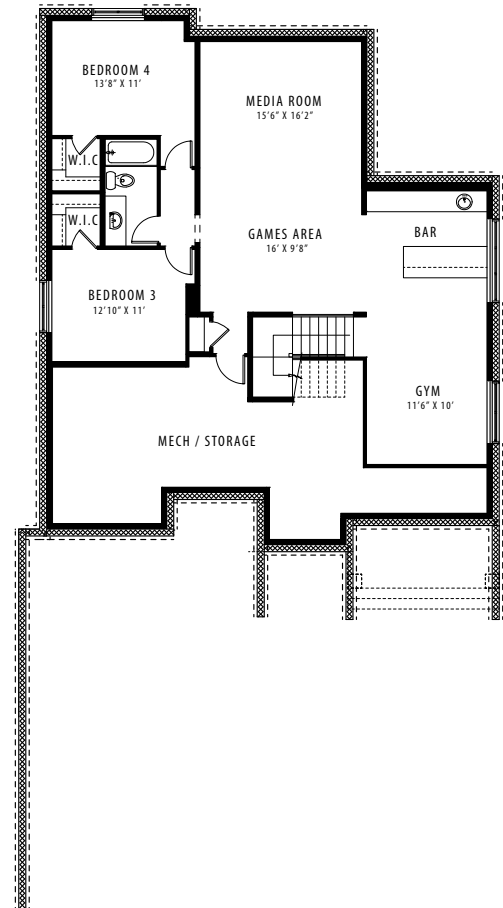
MODERN FARMHOUSE



MAIN FLOOR | 1968 SQFT



LOFT | 656 SQFT



LOWER LEVEL | 1370 SQFT

Contact our sales team for more information: [rocklandpark@crystalcreekhomes.ca](mailto:rocklandpark@crystalcreekhomes.ca) | 403-686-4176

All elevations, floorplans and dimensions are for illustrative purposes only and are intended to convey a concept and visualization of our homes. They are subject to modifications at any time and are not to be used for contractual purposes.



[crystalcreekhomes.ca](http://crystalcreekhomes.ca)