



FRONT ELEVATION



REAR ELEVATION

JOB #:
061-0420-004

MODEL:
SOMERFIELD

ELEVATION STYLE:
RUSTIC CONTEMPORARY

SPECIFICATIONS:
MAJESTIC

MUNICIPAL / LEGAL ADDRESS:
#237 ROWMONT DRIVE
LOT 4, BLOCK 20
PHASE 4

TOTAL AREA:

SCALE:
1/8"=1'-0"

DRAWN BY:
IRW

DATE:
JAN. 12/2024

REVISIONS:

THIS DRAWING, PLAN SET, BROCHURE OR RENDERING IS THE PROPERTY OF CRYSTAL CREEK HOMES INC. 6010 - 12th STREET SE, CALGARY AB, T2H 2X2 ALL RIGHTS RESERVED, INCLUDING THE RIGHT TO REPRODUCE, IN WHOLE OR IN PART, IN ANY FORM WITHOUT WRITTEN CONSENT OF CRYSTAL CREEK HOMES INC.

PG TITLE:

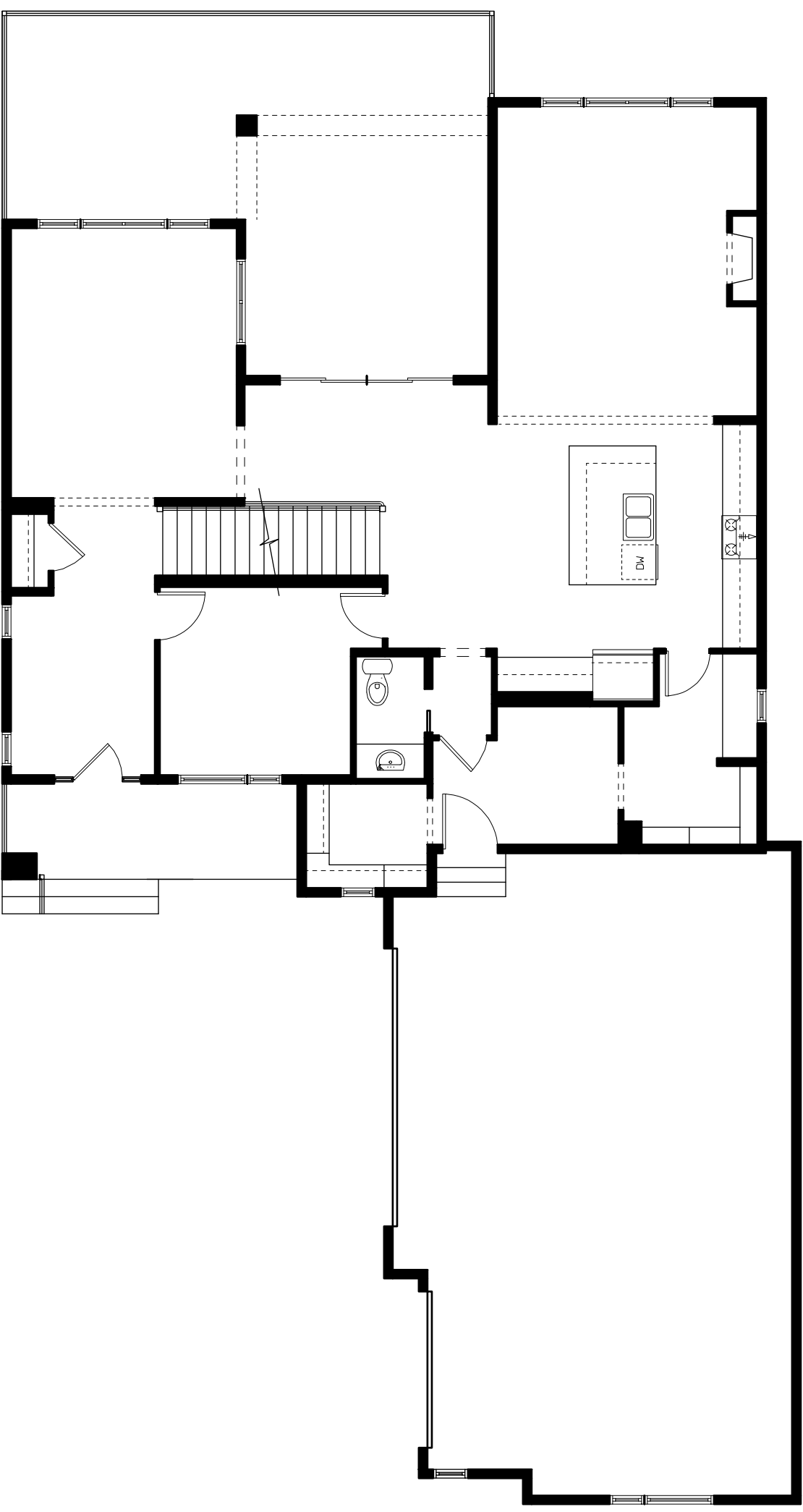
RELEASE INFO:

RELEASED FOR
CONSTRUCTION

CRYSTAL CREEK
HOMES INC.
6010 - 12th STREET SE
CALGARY, AB T2H 2X2
PHONE (403)254-6499 FAX (403)256-1911

SHEET NO.

A-1



MAIN FLOOR PLAN
1544.0 SQ.FT.

JOB #:
061-0420-004

MODEL:
SOMERFIELD

ELEVATION STYLE:
RUSTIC CONTEMPORARY

SPECIFICATIONS:
MAJESTIC

MUNICIPAL/LEGAL ADDRESS:
#237 ROWMONT DRIVE

LOT 4, BLOCK 20

PHASE 4

TOTAL AREA:

SCALE:
1/8"=1'-0"

DRAWN BY:
IRW

DATE:
JAN.12/2024

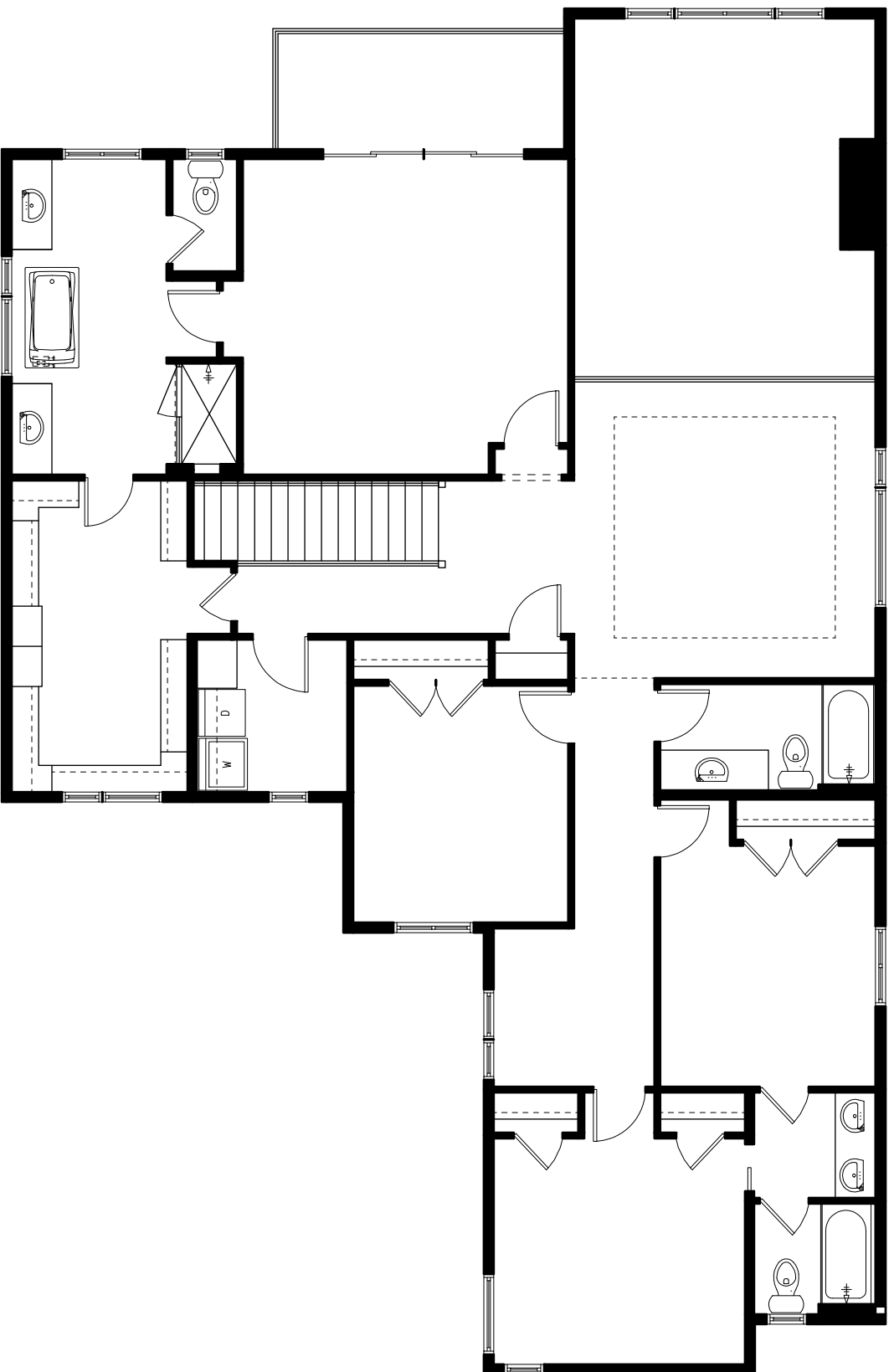
REVISIONS:

THIS DRAWING, PLAN SET, SPECIFICATION OR RENDERING IS THE PROPERTY OF CRYSTAL CREEK HOMES INC. ALL RIGHTS RESERVED, INCLUDING THE RIGHT TO REPRODUCE, IN WHOLE OR IN PART, IN ANY FORM WITHOUT WRITTEN CONSENT OF CRYSTAL CREEK HOMES INC.

PG TITLE:
RELEASE INFO:
RELEASED FOR CONSTRUCTION

CRYSTAL CREEK HOMES INC.
6610 - 12th STREET SE
CALGARY, AB T2B 2X2
PHONE (403)241-8489 FAX (403)241-9111

SHEET NO.
A-2



UPPER FLOOR PLAN
1825.0 SQ.FT.

JOB #:

061-0420-004

MODEL:

SOMERFIELD

ELEVATION STYLE:

RUSTIC CONTEMPORARY

SPECIFICATIONS:

MAJESTIC

MUNICIPAL/LEGAL ADDRESS:

#237 ROWMONT DRIVE

LOT 4, BLOCK 20

PHASE 4

TOTAL AREA:

SCALE:

1/8"=1'-0"

DRAWN BY:

IRW

DATE:

JAN.12/2024

REVISIONS:

THIS DRAWING, PLAN SET, SPECIFICATIONS OR INSTRUMENTS IN THE POSSESSION OF CRYSTAL CREEK HOMES INC. 8010 - 1261 87 STREET SE, CALGARY AB, T2H 2G3 ALL RIGHTS RESERVED, INCLUDING THE RIGHT TO REPRODUCE, IN WHOLE OR IN PART, IN ANY FORM OR BY ANY MEANS, WITHOUT THE WRITTEN CONSENT OF CRYSTAL CREEK HOMES INC.

PG TITLE:

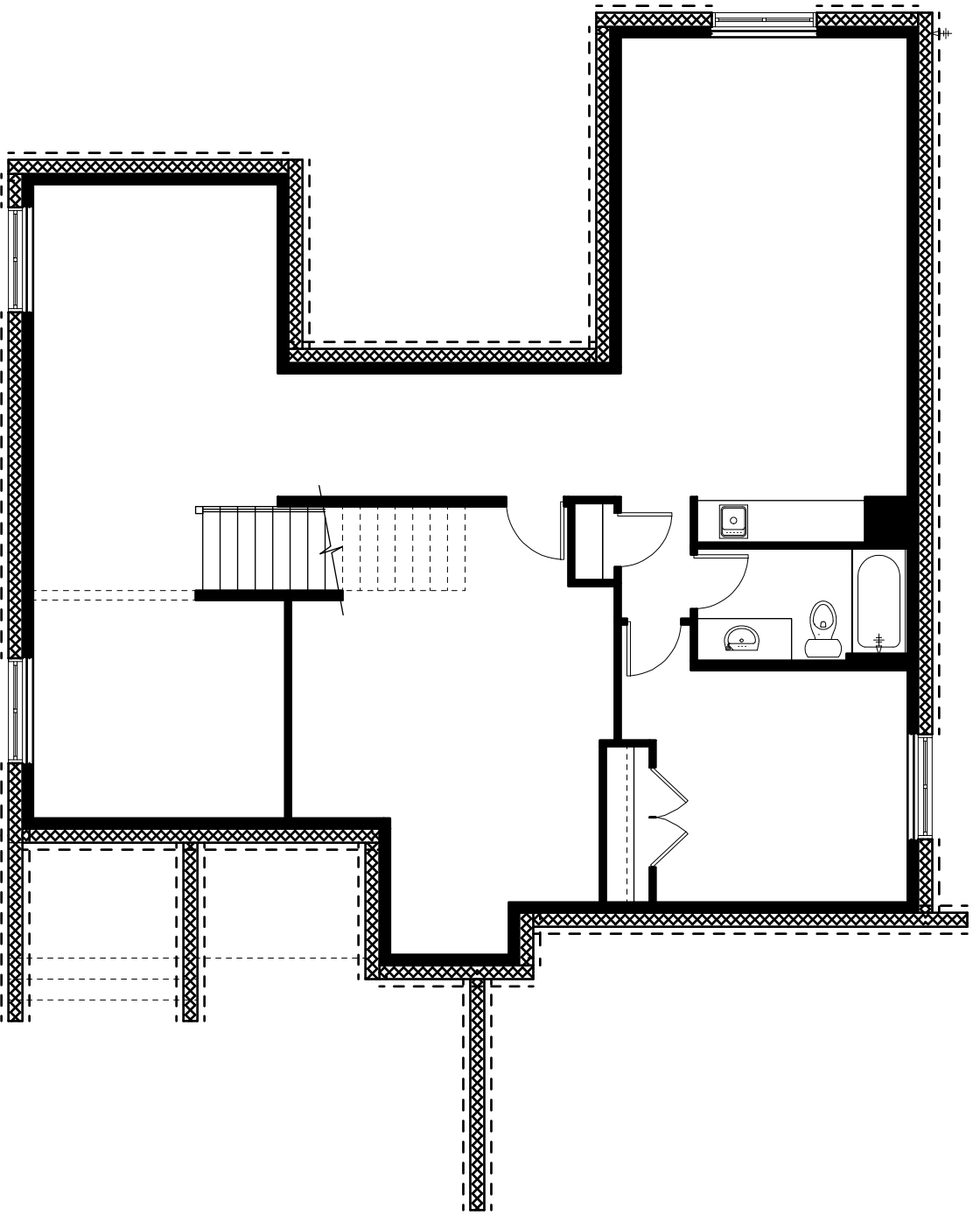
RELEASE INFO:

RELEASED FOR
CONSTRUCTION

CRYSTAL CREEK
HOMES INC.
8010 - 1261 STREET SE
PHONE (403) 254-5659 FAX (403) 256-1911

SHEET NO.

A-3



LOWER LEVEL PLAN
 OTHER 1115.0 SQ.FT.
 STAIRWELL 50.0 SQ.FT.
 TOTAL 1165.0 SQ.FT.

SHEET NO.	A-4	<p> 6010 - 12th STREET SE HOMES INC. PHONE (403)444-4499 FAX (403)256-1911 </p>	PG TITLE:	<p> THIS DRAWING IS AN SET. REPRODUCING OR REVERSEING IS THE PROPERTY OF CRYSTAL CREEK HOMES INC. 6010 - 12th STREET SE, CALGARY AB, T2C 2G2 ALL RIGHTS RESERVED. INCLUDING THE RIGHT TO REPRODUCE, IN WHOLE OR IN PART, IN ANY FORM WITHOUT THE WRITTEN CONSENT OF CRYSTAL CREEK HOMES INC. </p>
			<p> RELEASE INFO: RELEASED FOR CONSTRUCTION </p>	
			JOB #: 061-0420-004	
			MODEL: SOMERFIELD	
			ELEVATION STYLE: RUSTIC CONTEMPORARY	
			SPECIFICATIONS: MAJESTIC	
			MUNICIPAL / LEGAL ADDRESS: #237 ROWMONT DRIVE LOT 4, BLOCK 20 PHASE 4	
			TOTAL AREA:	
			SCALE: 1/8" = 1'-0"	
			DRAWN BY: IRW	
			DATE: JAN. 12/2024	
			REVISIONS:	