



**QUICK  
POSSESSION**



## **The Somerfield 46**

237 Rowmont Drive NW

**4584 SQFT**

---

4 BEDROOMS | 4.5 BATHROOMS | 3 CAR GARAGE | BASEMENT DEVELOPEMENT (1165 SQ FT)

---

ROCKLAND  PARK

[crystalcreekhomes.ca](http://crystalcreekhomes.ca)

# The Somerfield 46

237 Rowmont Drive NW

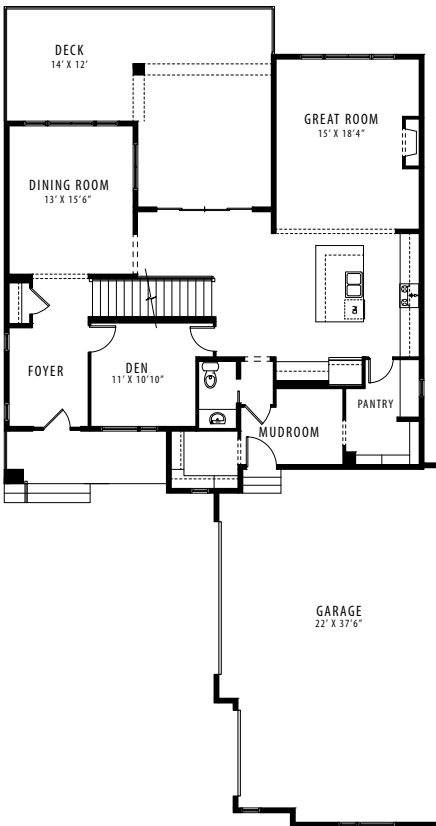
4584 SQFT

5 BEDROOMS | 4.5 BATHROOMS | 3 CAR GARAGE

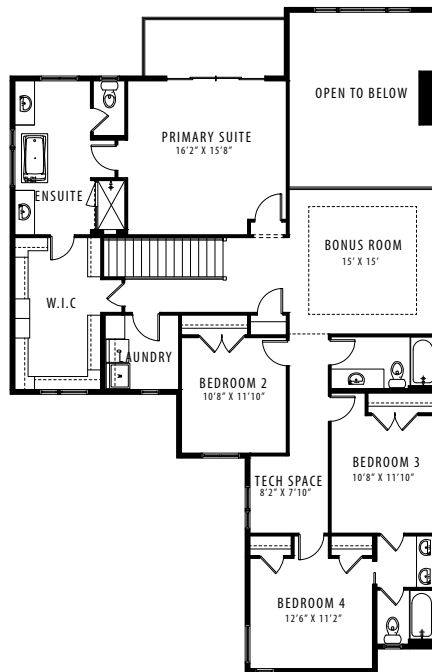


REAR ELEVATION

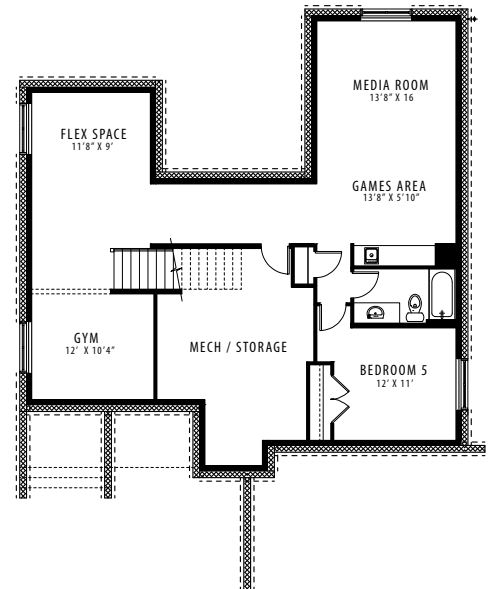
RUSTIC CONTEMPORARY



MAIN FLOOR | 1544 SQFT



UPPER FLOOR | 1875 SQFT



LOWER LEVEL | 1165 SQFT

Contact our sales team for more information: [rocklandpark@crystalcreekhomes.ca](mailto:rocklandpark@crystalcreekhomes.ca) | 403-686-4176

All elevations, floorplans and dimensions are for illustrative purposes only and are intended to convey a concept and visualization of our homes. They are subject to modifications at any time and are not to be used for contractual purposes.



[crystalcreekhomes.ca](http://crystalcreekhomes.ca)