



CRYSTAL CREEK
H O M E S

**QUICK
POSSESSION**



The Somerfield 46

237 Rowmont Drive NW

4584 SQFT

5 BEDROOMS | 4.5 BATHROOMS | 3 CAR GARAGE | BASEMENT DEVELOPEMENT (1165 SQ FT)

ROCKLAND  PARK

crystalcreekhomes.ca

The Somerfield 46

237 Rowmont Drive NW

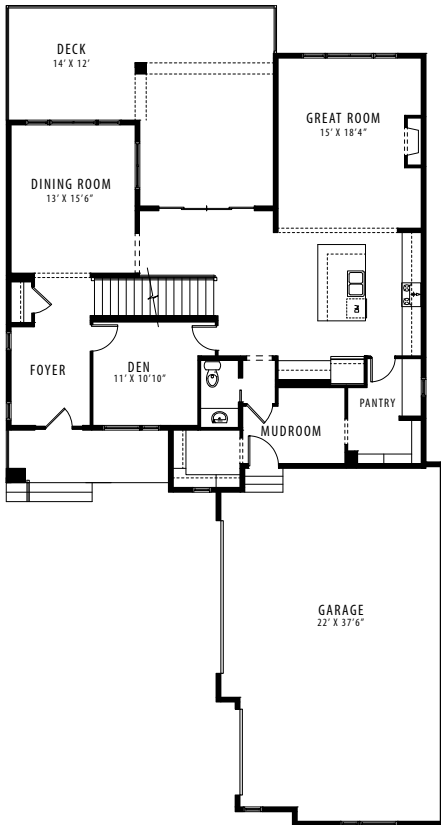
4584 SQFT



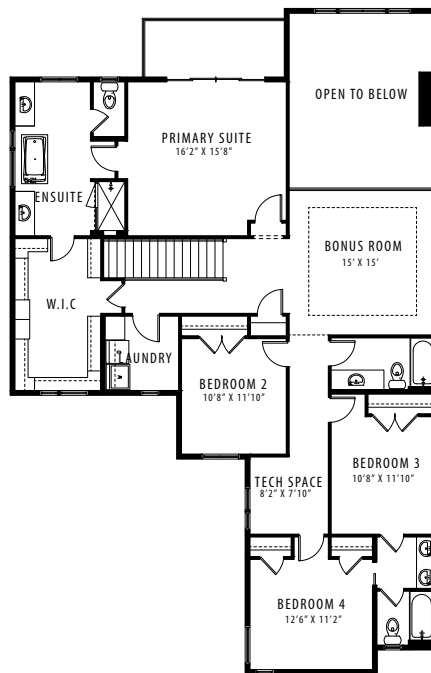
REAR ELEVATION

RUSTIC CONTEMPORARY

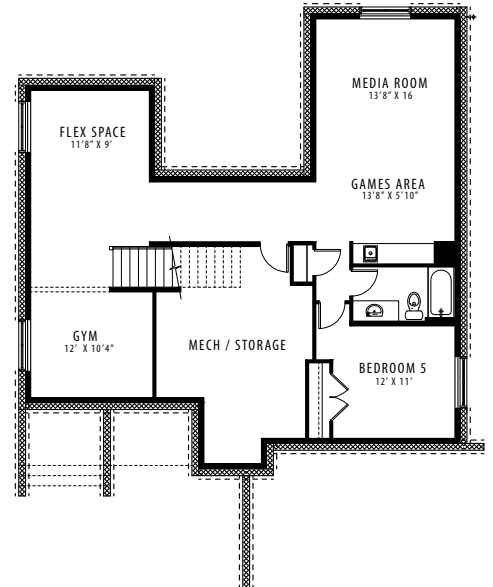
5 BEDROOMS | 4.5 BATHROOMS | 3 CAR GARAGE | BASEMENT DEV(1165 SQ FT)



MAIN FLOOR | 1544 SQFT



UPPER FLOOR | 1875 SQFT



LOWER LEVEL | 1165 SQFT

Contact our sales team for more information: rocklandpark@crystalcreekhomes.ca | 403-686-4176

All elevations, floorplans and dimensions are for illustrative purposes only and are intended to convey a concept and visualization of our homes. They are subject to modifications at any time and are not to be used for contractual purposes.



crystalcreekhomes.ca