



CRYSTAL CREEK
H O M E S

**QUICK
POSSESSION**



The Grayson

661 Quarry Way SE

2925 SQFT

3 BEDROOMS | 2.5 BATHROOMS | 3 CAR GARAGE



crystalcreekhomes.ca

The Grayson

661 Quarry Way SE

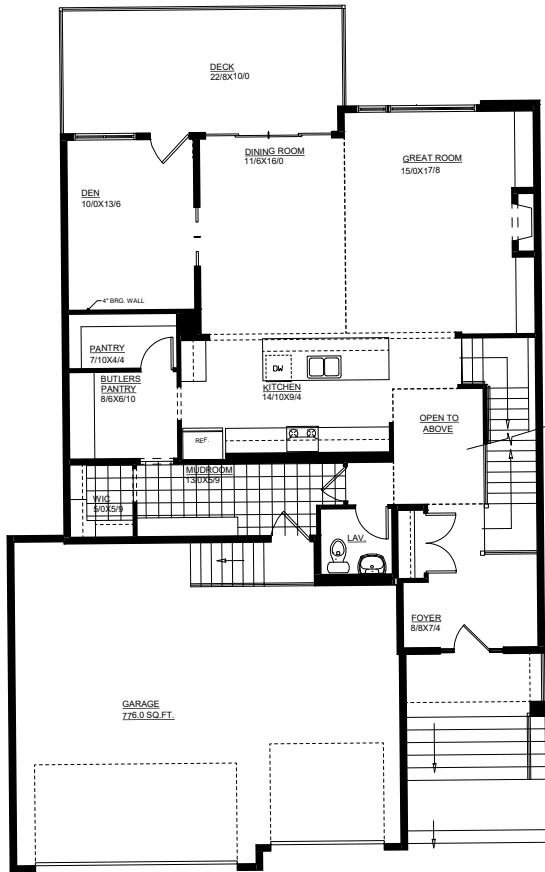
2925 SQFT

3 BEDROOMS | 2.5 BATHROOMS | 3 CAR GARAGE

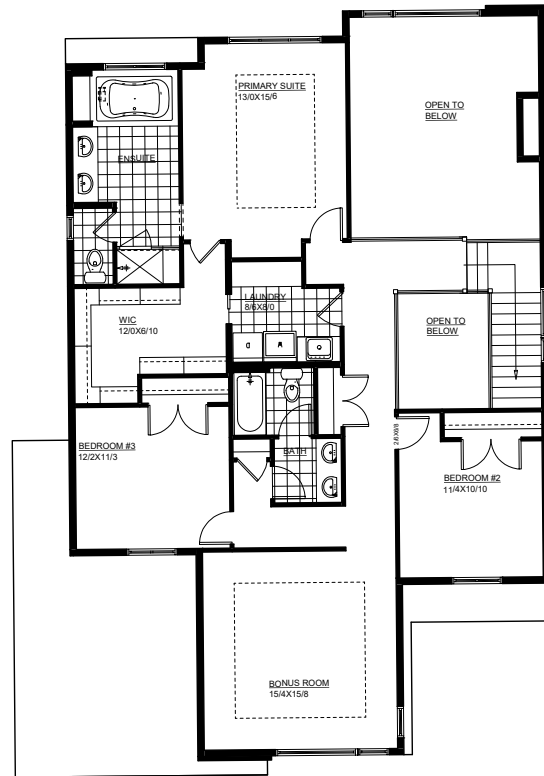


FRONT ELEVATION

WEST COAST MODERN



MAIN FLOOR | 1395 SQFT



LOWER LEVEL | 1530 SQFT

Contact our sales team for more information: quarrypark@crystalcreekhomes.ca | 403-930-6397

All elevations, floorplans and dimensions are for illustrative purposes only and are intended to convey a concept and visualization of our homes. They are subject to modifications at any time and are not to be used for contractual purposes.



crystalcreekhomes.ca