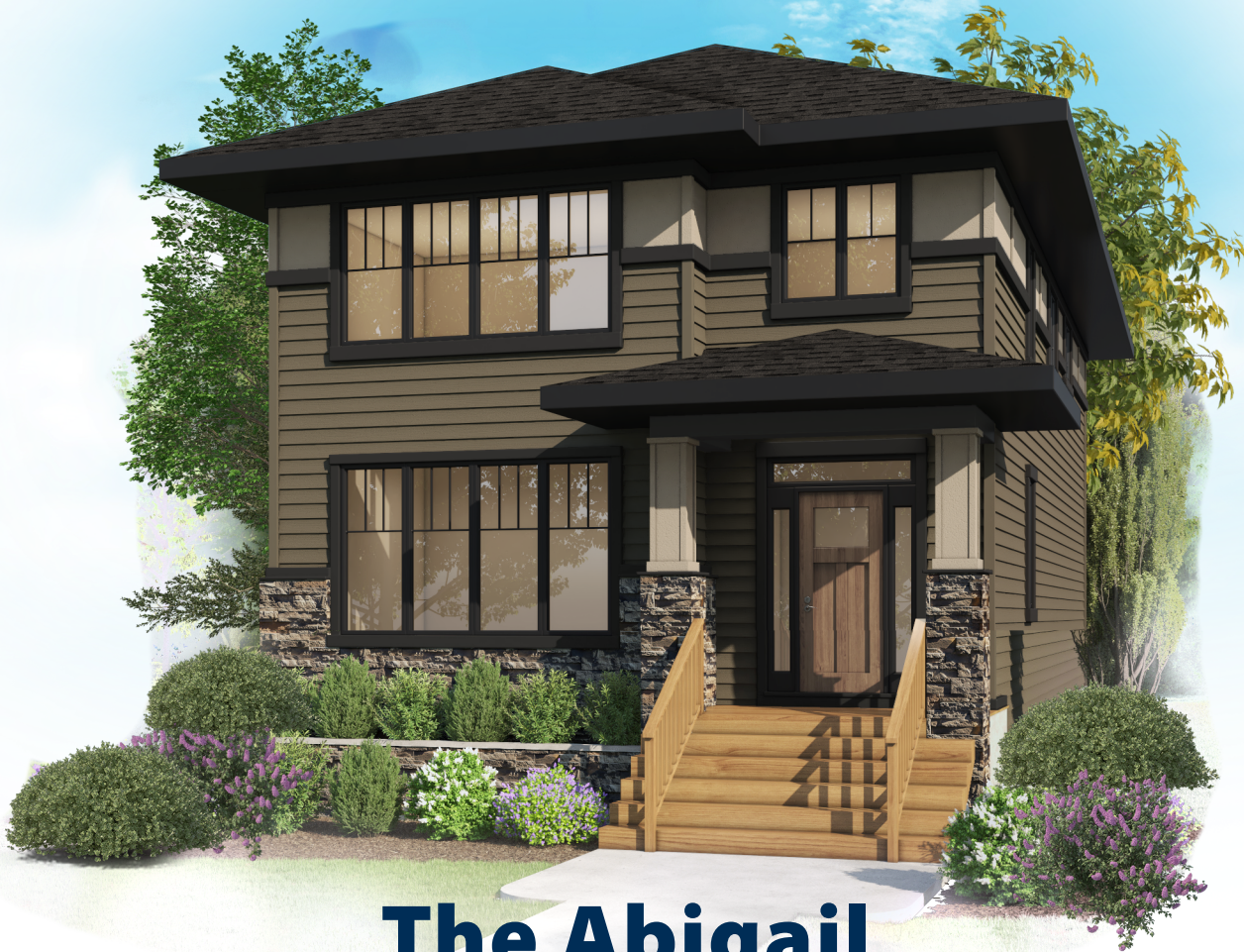




**CRYSTAL CREEK**  
HOMES

**QUICK  
POSSESSION**



## **The Abigail**

215 Calais Drive SW

**3264** SQFT

4 BEDROOMS | 3.5 BATHROOMS | CARRIAGE SUITE | BASEMENT DEVELOPEMENT (936 SQ FT)



crystalcreekhomes.ca

# The Abigail

215 Calais Drive SW

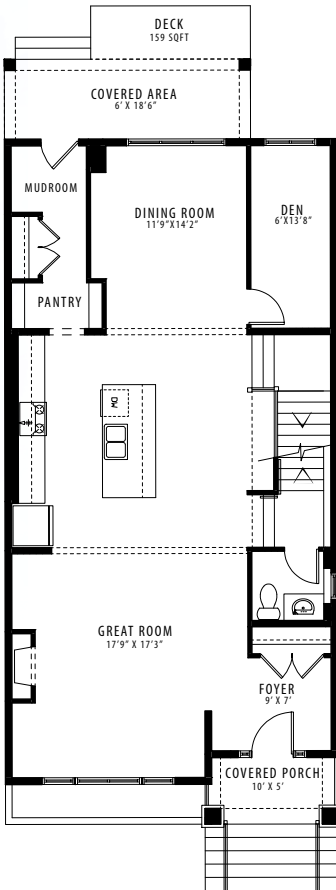
**3264 SQFT**

4 BEDROOMS | 3.5 BATHROOMS | CARRIAGE SUITE | BASEMENT DEVELOPEMENT

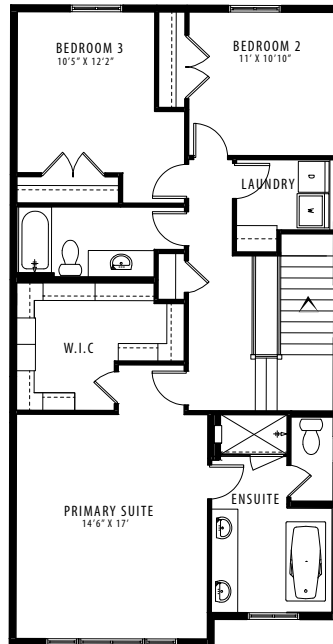


CARRIAGE SUITE ELEVATION

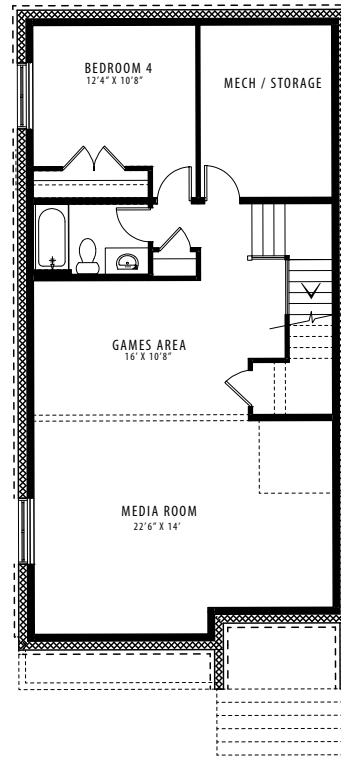
**PRAIRIE**



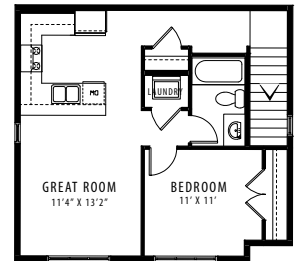
MAIN FLOOR | 1194 SQFT



UPPER FLOOR | 1116 SQFT



LOWER LEVEL | 954 SQFT



CARRIAGE SUITE | 583 SQFT

Contact our sales team for more information: [currie@crystalcreekhomes.ca](mailto:currie@crystalcreekhomes.ca) | 403-452-3571

All elevations, floorplans and dimensions are for illustrative purposes only and are intended to convey a concept and visualization of our homes. They are subject to modifications at any time and are not to be used for contractual purposes.



[crystalcreekhomes.ca](http://crystalcreekhomes.ca)