



**QUICK
POSSESSION**



The Palmer

227 Calais Drive SW

4352 SQFT

6 BEDROOMS | 4.5 BATHROOMS | 2 CAR GARAGE | BASEMENT DEVELOPEMENT (828 SQ FT)



crystalcreekhomes.ca

The Palmer

227 Calais Dr SW

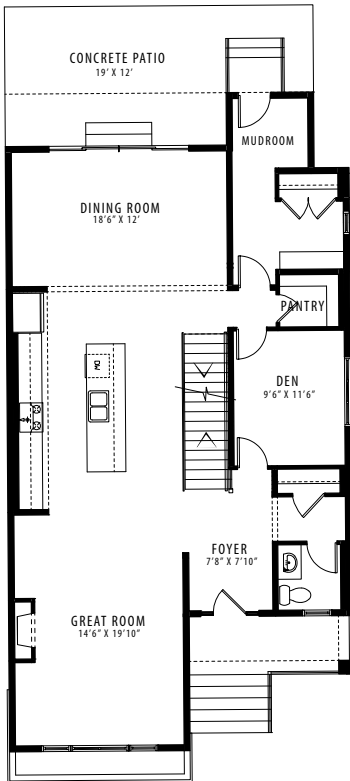
4352 SQFT

6 BEDROOMS | 4.5 BATHROOMS | 2 CAR GARAGE | BASEMENT DEVELOPEMENT

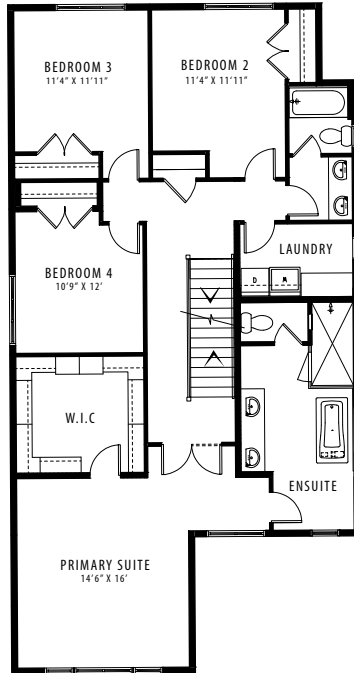


GARAGE ELEVATION

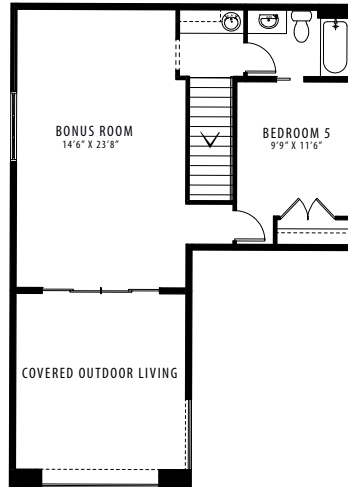
MODERN FARMHOUSE



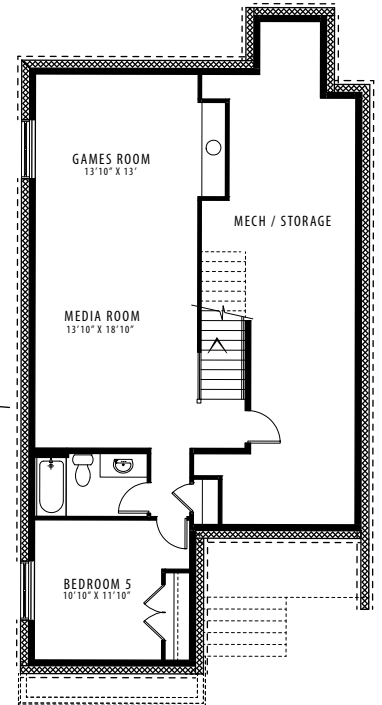
MAIN FLOOR | 1400 SQFT



UPPER FLOOR | 1486 SQFT



THIRD FLOOR | 638 SQFT



LOWER LEVEL | 828 SQFT

Contact our sales team for more information: currie@crystalcreekhomes.ca | 403-452-3571

All elevations, floorplans and dimensions are for illustrative purposes only and are intended to convey a concept and visualization of our homes. They are subject to modifications at any time and are not to be used for contractual purposes.



crystalcreekhomes.ca