



**CRYSTAL CREEK**  
HOMES

**QUICK  
POSSESSION**



## The Palmer

227 Calais Drive SW

**4452** SQFT

6 BEDROOMS | 4.5 BATHROOMS | 3 CAR GARAGE | BASEMENT DEVELOPEMENT (828 SQ FT)



[crystalcreekhomes.ca](http://crystalcreekhomes.ca)

# The Palmer

227 Calais Dr SW

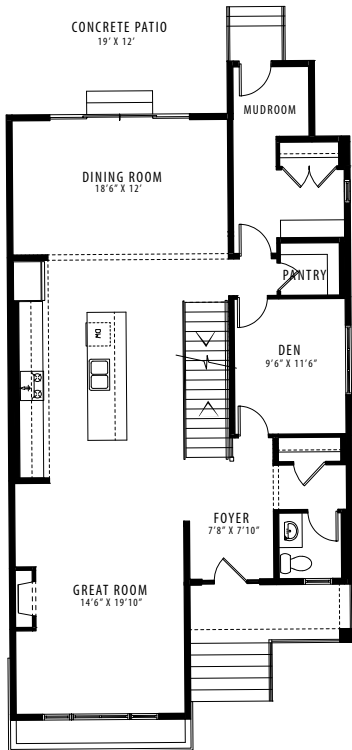
**4452** SQFT

6 BEDROOMS | 4.5 BATHROOMS | 3 CAR GARAGE | BASEMENT DEVELOPEMENT

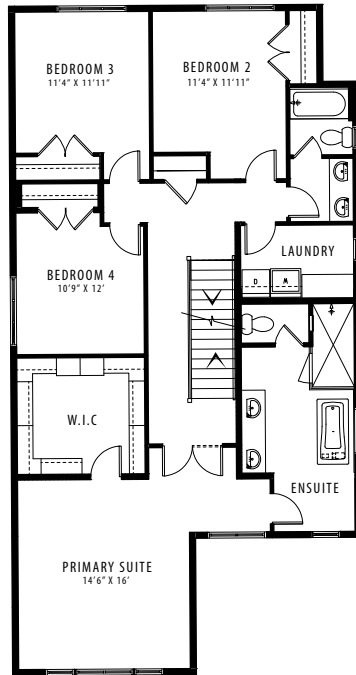


GARAGE ELEVATION

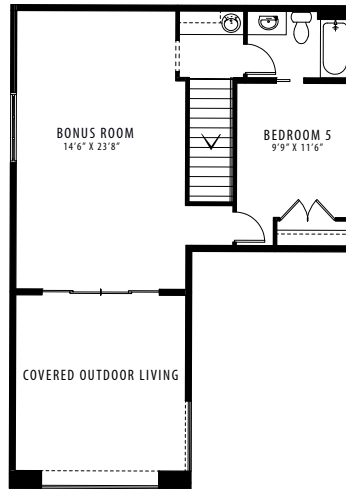
**MODERN FARMHOUSE**



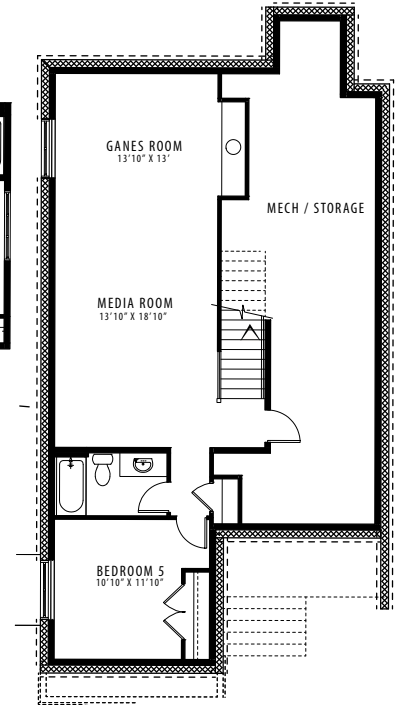
MAIN FLOOR | 1400 SQFT



UPPER FLOOR | 1536 SQFT



THIRD FLOOR | 688 SQFT



LOWER LEVEL | 828 SQFT

Contact our sales team for more information: [currie@crystalcreekhomes.ca](mailto:currie@crystalcreekhomes.ca) | 403-452-3571

All elevations, floorplans and dimensions are for illustrative purposes only and are intended to convey a concept and visualization of our homes. They are subject to modifications at any time and are not to be used for contractual purposes.



[crystalcreekhomes.ca](http://crystalcreekhomes.ca)