



CRYSTAL CREEK
H O M E S

**QUICK
POSSESSION**



The Devonshire

48 Legacy Forest Landing SE

2734 SQFT

3 BEDROOMS | 2.5 BATHROOMS | 3 CAR GARAGE



crystalcreekhomes.ca

The Devonshire 36

48 Legacy Forest Landing SE

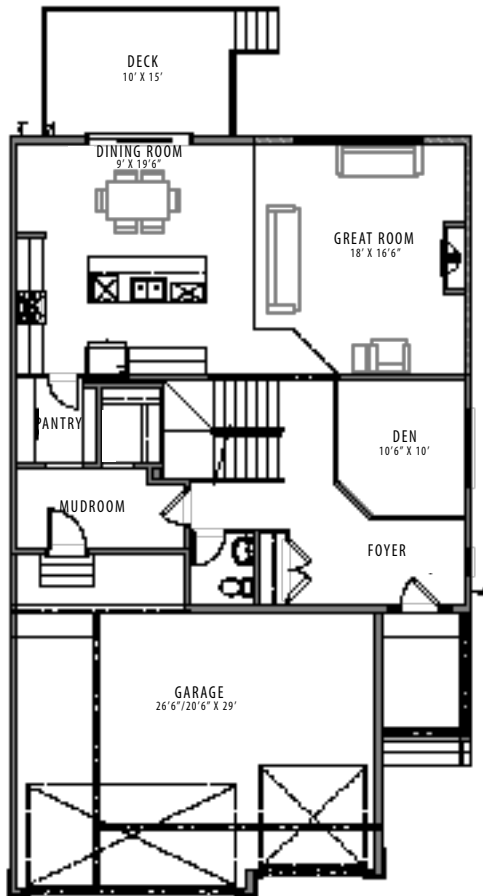
2734 SQ FT

3 BEDROOMS | 2.5 BATHROOMS | 3 CAR GARAGE

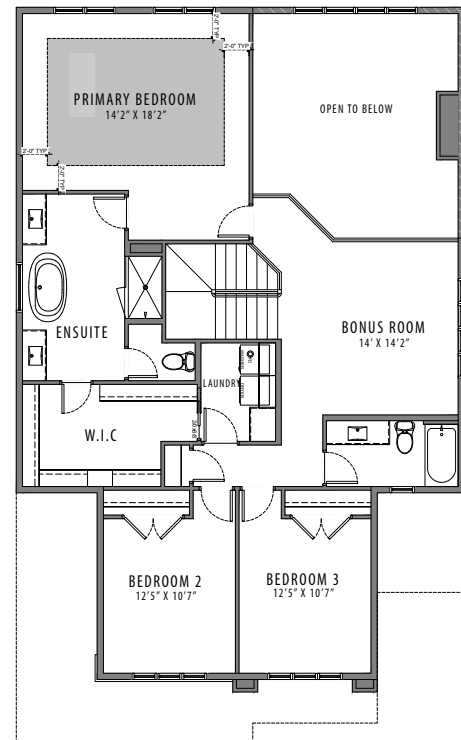


FRONT ELEVATION

PRAIRIE



MAIN FLOOR | 1271 SQ FT



UPPER FLOOR | 1463 SQ FT

Contact our sales team for more information: legacy@crystalcreekhomes.ca | 403-452-5697

All elevations, floorplans and dimensions are for illustrative purposes only and are intended to convey a concept and visualization of our homes. They are subject to modifications at any time and are not to be used for contractual purposes.



crystalcreekhomes.ca