



CRYSTAL CREEK
H O M E S

**QUICK
POSSESSION**



The Dalton

641 Quarry Way SE

3937 SQFT

4 BEDROOMS | 3.5 BATHROOMS | BASEMENT DEVELOPMENT (1768 SQ FT)

Quarry
Park

crystalcreekhomes.ca

The Dalton

641 Quarry Way SE

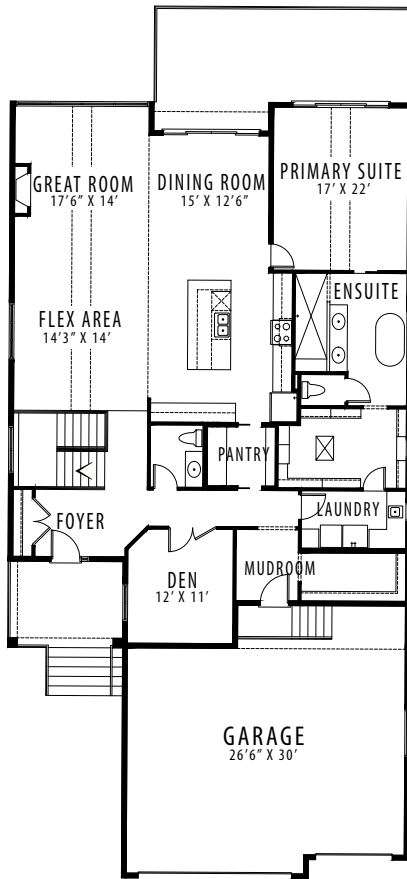
3937 SQFT

4 BEDROOMS | 3.5 BATHROOMS | BASEMENT DEVELOPMENT (1768 SQ FT)

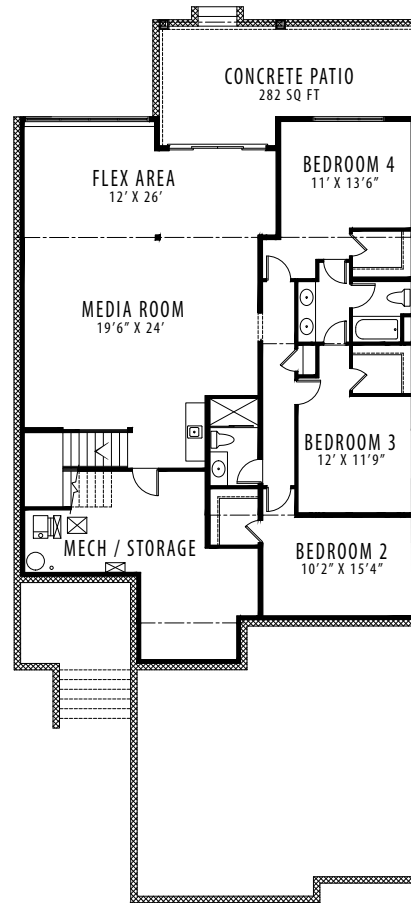


REAR ELEVATION

MODERN FARMHOUSE



MAIN FLOOR | 2169 SQFT



LOWER LEVEL | 1768 SQFT

Contact our sales team for more information: quarrypark@crystalcreekhomes.ca | 403-930-6397

All elevations, floorplans and dimensions are for illustrative purposes only and are intended to convey a concept and visualization of our homes. They are subject to modifications at any time and are not to be used for contractual purposes.



crystalcreekhomes.ca