



**CRYSTAL CREEK**  
H O M E S

**QUICK  
POSSESSION**



## **The Blairmore**

653 Quarry Way SE

**3330 SQFT**

---

3 BEDROOMS | 2.5 BATHROOMS | BASEMENT DEVELOPMENT (1315 SQFT)

---



[crystalcreekhomes.ca](http://crystalcreekhomes.ca)

# The Blairmore

653 Quarry Way SE

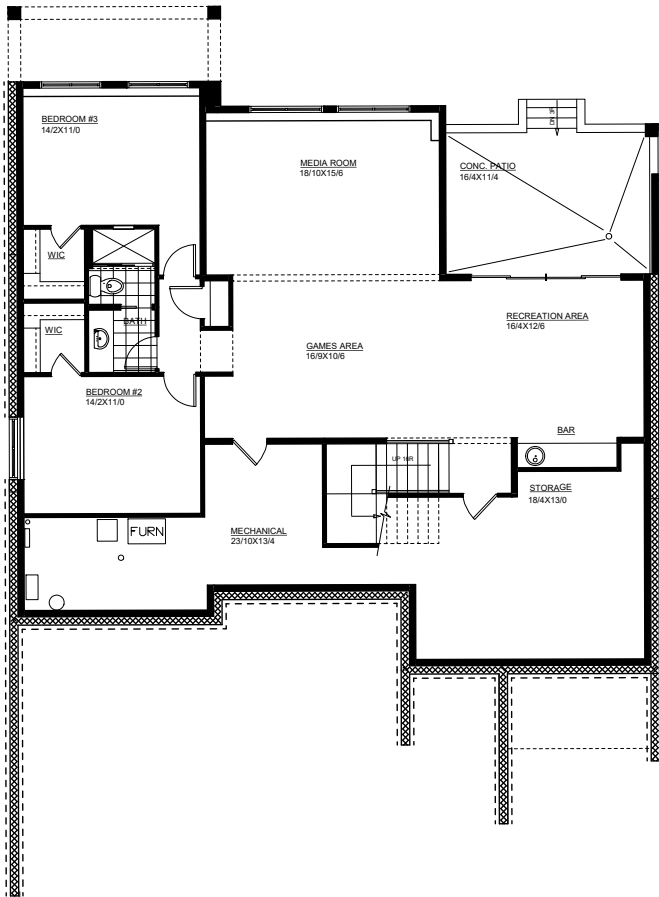
3330 SQFT

3 BEDROOMS | 2.5 BATHROOMS | BASEMENT DEVELOPMENT (1315 SQFT)

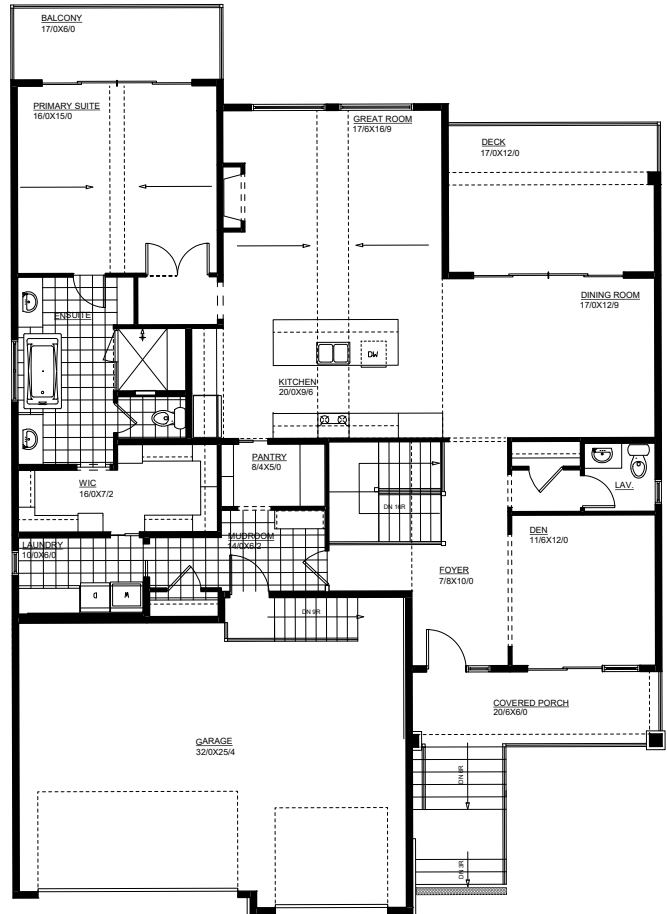


FRONT ELEVATION

SCANDINAVIAN



MAIN FLOOR | 2015 SQFT



LOWER LEVEL | 1315 SQFT

Contact our sales team for more information: [quarrypark@crystalcreekhomes.ca](mailto:quarrypark@crystalcreekhomes.ca) | 403-930-6397

All elevations, floorplans and dimensions are for illustrative purposes only and are intended to convey a concept and visualization of our homes. They are subject to modifications at any time and are not to be used for contractual purposes.



[crystalcreekhomes.ca](http://crystalcreekhomes.ca)