



CRYSTAL CREEK
H O M E S

**QUICK
POSSESSION**



The Blairmore

653 Quarry Way SE

3330 SQFT

3 BEDROOMS | 2.5 BATHROOMS | BASEMENT DEVELOPMENT (1315 SQFT)



crystalcreekhomes.ca

The Blairmore

653 Quarry Way SE

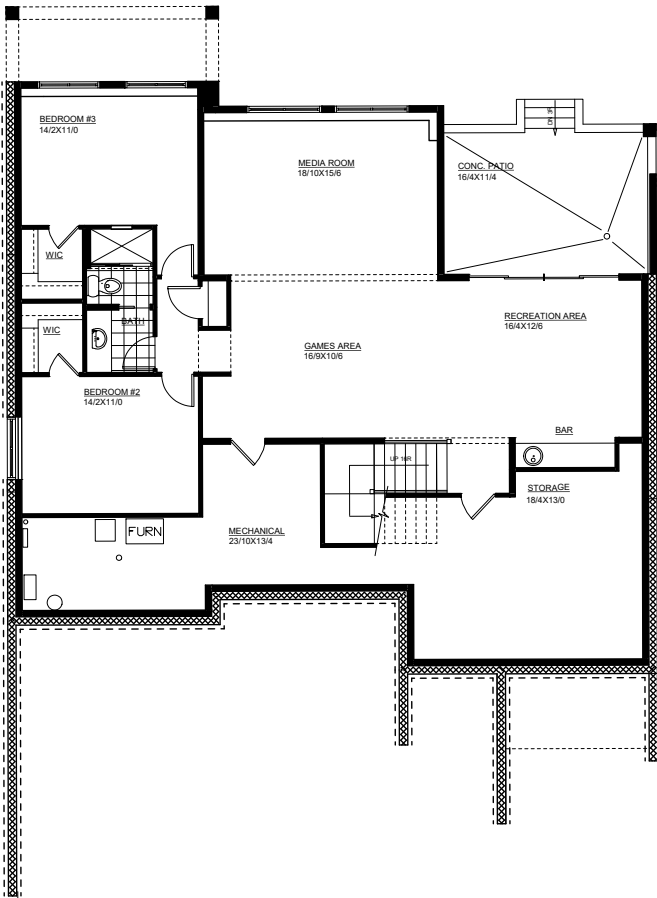
3330 SQFT

3 BEDROOMS | 2.5 BATHROOMS | BASEMENT DEVELOPMENT (1315 SQFT)

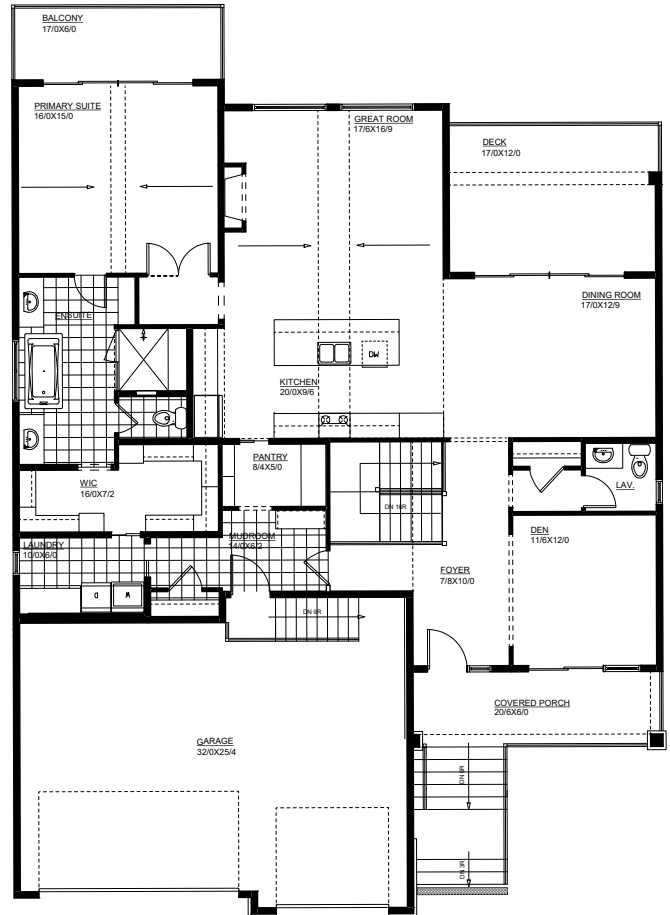


FRONT ELEVATION

SCANDANAVIAN



MAIN FLOOR | 2015 SQFT



LOWER LEVEL | 1315 SQFT

Contact our sales team for more information: quarrypark@crystalcreekhomes.ca | 403-930-6397

All elevations, floorplans and dimensions are for illustrative purposes only and are intended to convey a concept and visualization of our homes. They are subject to modifications at any time and are not to be used for contractual purposes.



crystalcreekhomes.ca