

The Birch 26

AVAILABLE ELEVATIONS



FRONT ELEVATION

PRAIRIE



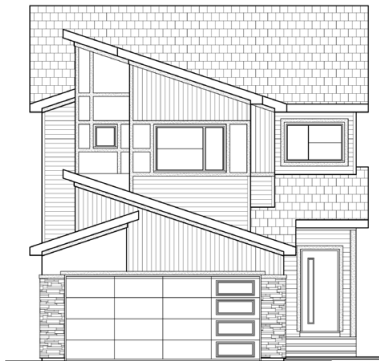
FRONT ELEVATION

CRAFTSMAN



FRONT ELEVATION

MODERN FARMHOUSE



FRONT ELEVATION

MODERN

Please confirm with our Sales Team which elevations are available in your desired community. All elevations, floorplans and dimensions are for illustrative purposes only and are intended to convey a concept and visualization of our homes.

They are subject to modifications at any time and are not to be used for contractual purposes. Square footage noted reflects Residential Measurement Standard.



The Birch 26

PRAIRIE

2,435 SQFT

3 BEDROOMS | 2.5 BATHROOMS | 2 CAR GARAGE



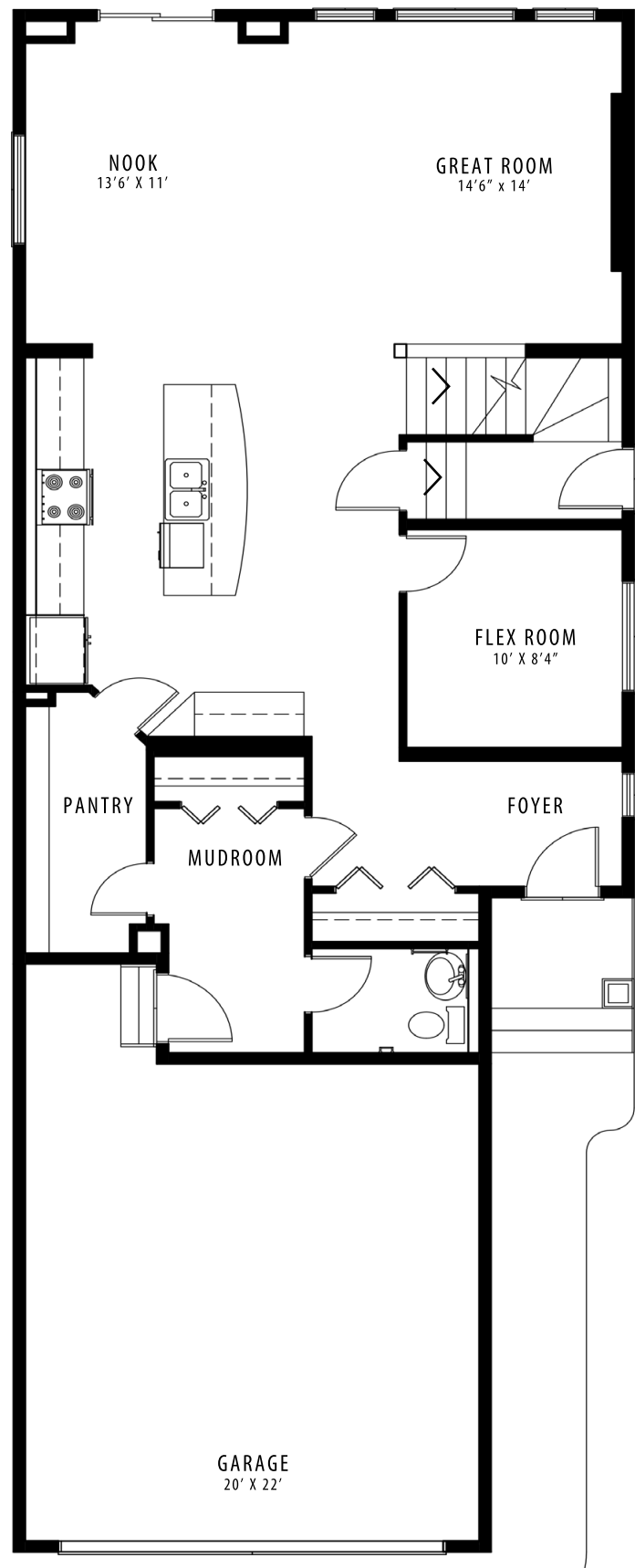
crystalcreekhomes.ca

crystalcreekhomes.ca

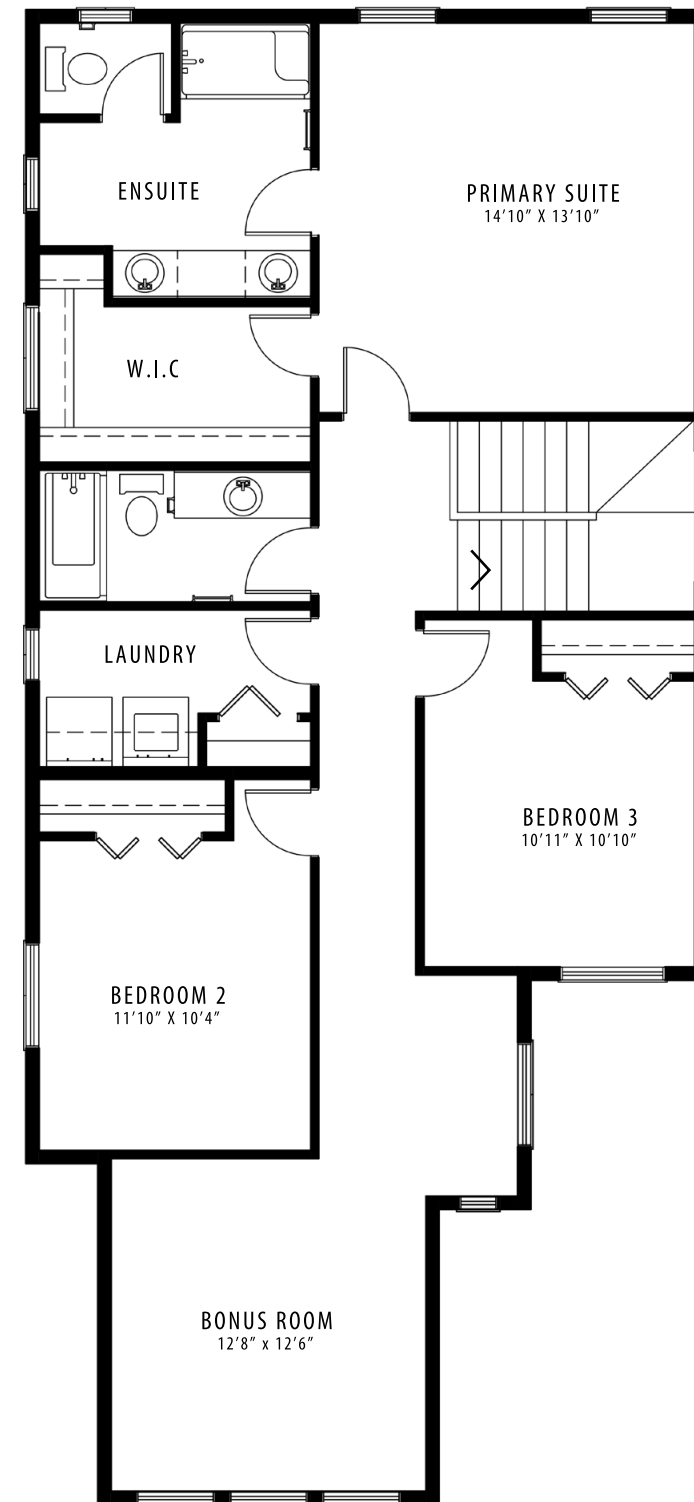
The Birch 26

PRAIRIE

2,435 SQFT



MAIN FLOOR | 1163 SQFT



UPPER FLOOR | 1272 SQFT