

# The Poplar

## AVAILABLE ELEVATIONS



FRONT ELEVATION

**PRAIRIE**



FRONT ELEVATION

**CRAFTSMAN**



FRONT ELEVATION

**MODERN FARMHOUSE**



FRONT ELEVATION

**MODERN**

Please confirm with our Sales Team which elevations are available in your desired community. All elevations, floorplans and dimensions are for illustrative purposes only and are intended to convey a concept and visualization of our homes.

They are subject to modifications at any time and are not to be used for contractual purposes. Square footage noted reflects Residential Measurement Standard.



[crystalcreekhomes.ca](http://crystalcreekhomes.ca)



## The Poplar 26

MODERN

**2,037 SQFT**

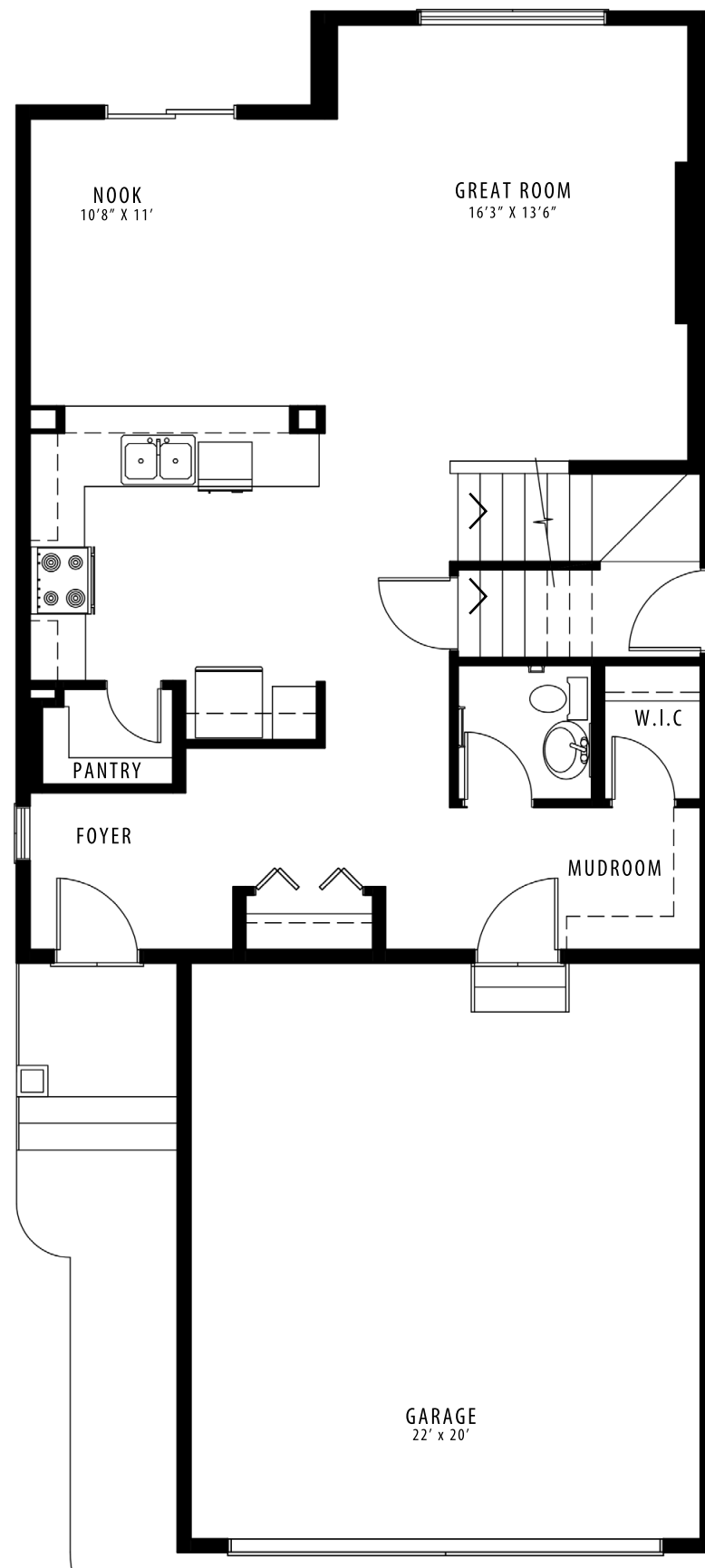
3 BEDROOMS | 2.5 BATHROOMS | 2 CAR GARAGE

[crystalcreekhomes.ca](http://crystalcreekhomes.ca)

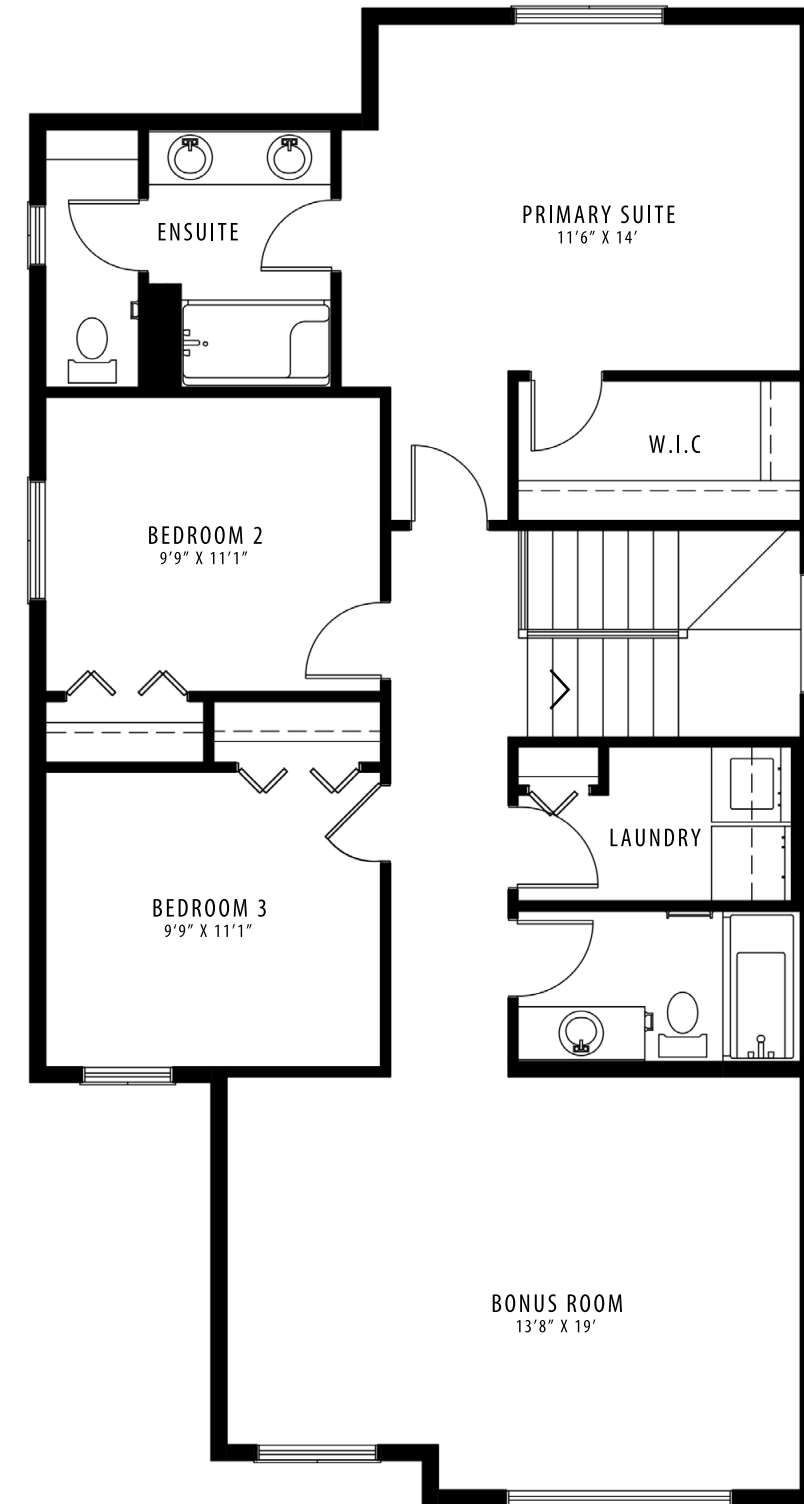
# The Poplar 26

MODERN

2,037 SQFT



MAIN FLOOR | 885 SQFT



UPPER FLOOR | 1152 SQFT