



19 YEARS  
→ EST. 2004

[crystalcreekhomes.ca](http://crystalcreekhomes.ca)

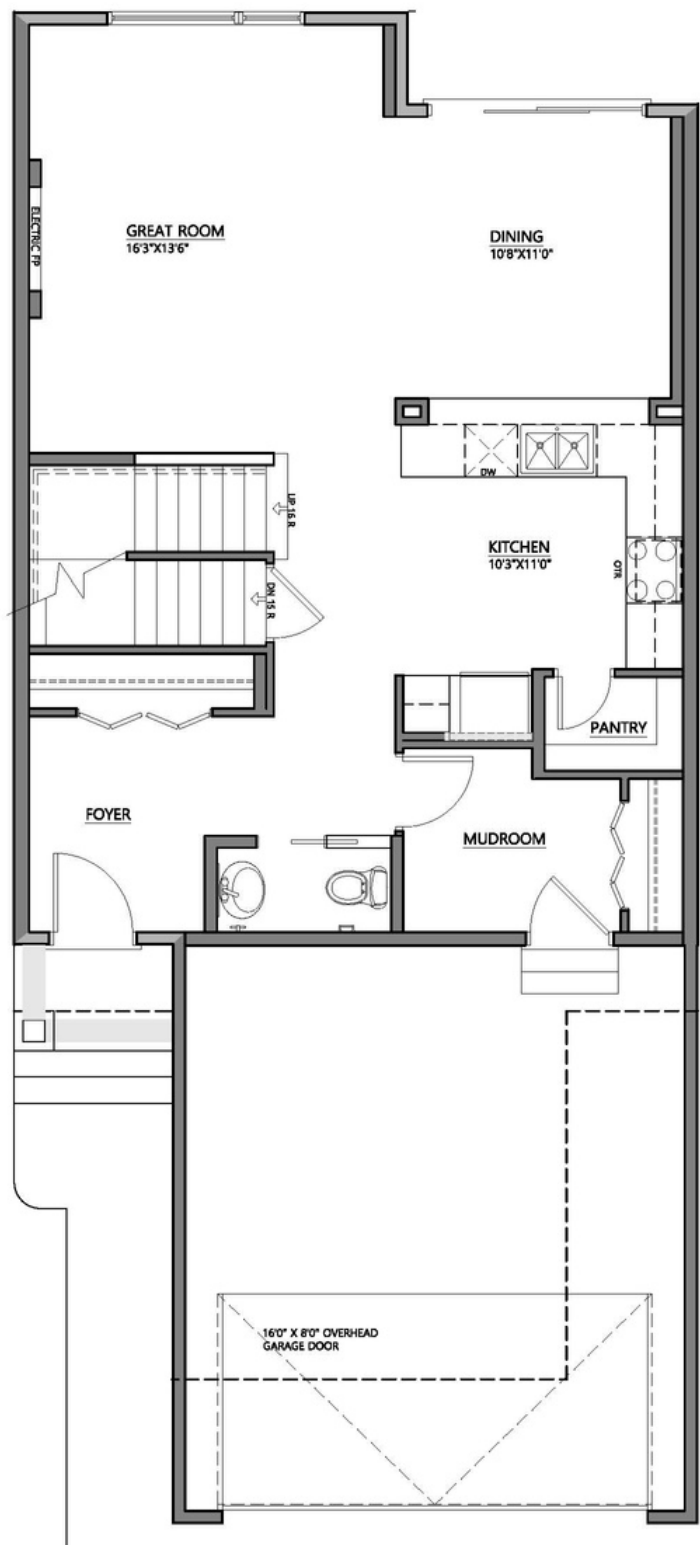


The Poplar 26

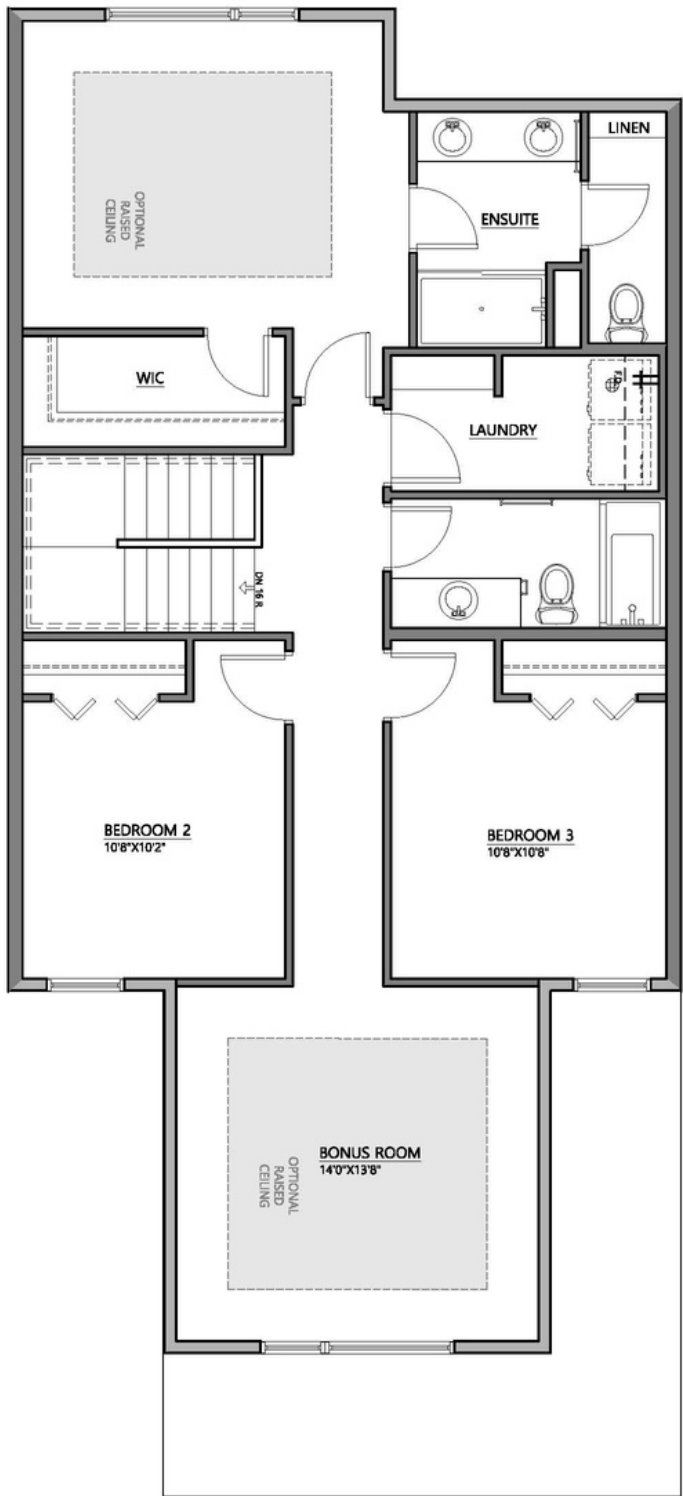
2.5 Bath  
3 Bed  
1980 sqft

# The Poplar 26

1980 sqft



9'1" Main Floor | 885 sqft



8'1" Second Level | 1095 sqft

## Available Elevations:

• Please confirm with our Sales Team which elevations are available in your desired community. All elevations, floorplans and dimensions are for illustrative purposes only and are intended to convey a concept and visualization of our homes. They are subject to modifications at any time and are not to be used for contractual purposes. Square footage noted reflects Residential Measurement Standard.



Prairie



Modern Farmhouse



Contemporary