

# The Wyatt

252 Belvedere Dr SE

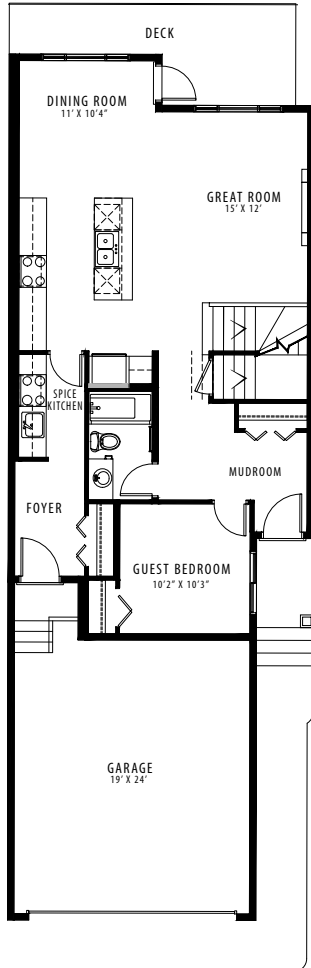
2238 SQ FT

3 BEDROOMS | 2.5 BATHROOMS | 2 CAR GARAGE

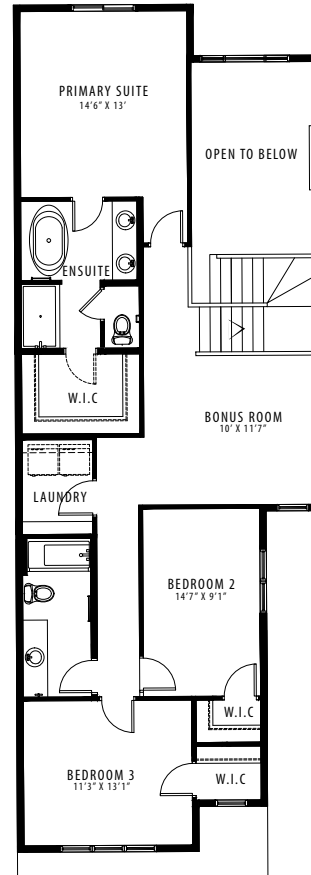


FRONT ELEVATION

MODERN FARMHOUSE



MAIN FLOOR | 995 SQFT



UPPER FLOOR | 1243 SQFT

Contact our sales team for more information: [belvedere@crystalcreekhomes.ca](mailto:belvedere@crystalcreekhomes.ca) | 403-984-3501

All elevations, floorplans and dimensions are for illustrative purposes only and are intended to convey a concept and visualization of our homes. They are subject to modifications at any time and are not to be used for contractual purposes.



[crystalcreekhomes.ca](http://crystalcreekhomes.ca)